

IIKL Distribution
"So much more than Fire and Lighting"

IIKL PRODUCT CATALOGUE



V3



Fire alarm and emergency lighting engineers keyring set

OVER
40
KEYS



Lost your keys?
New engineer starting?

We have a solution for you...

Our keyring set includes over 40 essential keys, including:

- Emergency lighting test keys
- Manual call point test keys
- Fire alarm panel door keys
- Fire alarm panel access control keys
- Fire alarm commissioning keys
- Key switch keys
- Log book cabinet key
- Mains isolator keys

Fire Alarm & Emergency Lighting Keyring • Part No. T10019



All fire alarm and emergency lighting design and associated products comply to British and European Industry standards BS5266, BS5839 and EN54.



DISTRIBUTION



DESIGN & PLANNING



TECHNICAL ASSISTANCE



COMMISSIONING



RISK ASSESSMENT

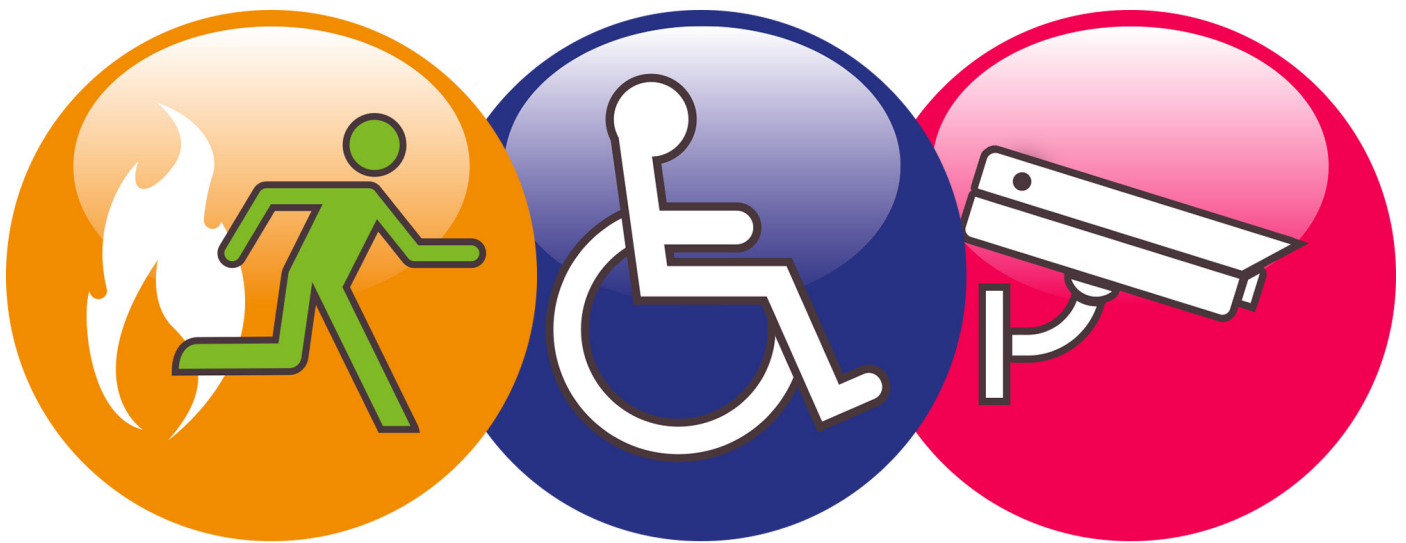


ON-SITE SUPPORT



Illumino Ignis (Kent) Ltd

LIGHTING & FIRE DESIGN, SUPPLY & SUPPORT



An introduction to IIKL

IIKL is an independent, professional customer focused distributor providing the personal touch to deliver the service our customers require and deserve.

As industry professionals we specialise in the supply and support of an extensive 'A to Z' stock portfolio of all major UK market leading manufacturers including Advanced, Apollo, C-Tec, Electro Detectors, Hochiki, KAC, Kentec, Morley, Tyco, Vox Ignis, Ziton as well as many others.

IIKL is the 'One Stop Shop' for all your Fire Alarm, Emergency Lighting, Life Safety, Disability and Security Products providing same day dispatch for next day delivery

CONTENTS

Advert

2

Fire Alarm & Emergency Lighting Keyring Advert

Introduction

3

Introduction To Illumino Ignis (Kent) Ltd

BS5839-1 Guide

6-9

A guide to BS5839-1:2017

Installation Equipment

10

Cable • Accessories • Rapid Bracket

Engineer Starter Kits

11

Absolute Essentials • Programmers & Leads • Tools • Batteries & Enclosures

Ancillary Fire Equipment

12

Mains Isolator • Easy Relay • Multi-Function Relay • Timer Relay • Remote Indicator
Digital Timeswitch • Firemans Switch • Commissioning Accessories

DualCom & GSM Auto Dialler

13

DualCom • GSM Auto Dialler

Evacuation Alert Systems

14

Evac Go

Addressable Fire Alarm Panels

15-16

MX Pro 5 Range • Touch Control Remote Terminal • AlarmCalm • Advanced Commander

Extinguishant Alarm Panels

17

Advanced ExGo • Kentec Sigma XT • Kentec Sigma XT+

Addressable & Conventional Fire Alarm Systems

18-35

Kentec • Global • C-Tec • Morley • Ampac • Haes • Fireclass • Ziton • SMS • Fike • Eaton

Conventional Fire Alarm Audio Visual

36

Platform Sounders • Banshee Sounders • Banshee Sounder Beacons • Bells • Protective Cages
Manual Call Point Protective Covers

Conventional Call Point, Key Switches & Sounder

37

Fire Cryer • Manual Call Points • Manual Call Point Accessories • Key Switches • Rocker Switches

Addressable & Conventional Fire Alarm Devices

38-47

Apollo • System Sensor • Hochiki • Nittan

CONTENTS

Radio Communication Equipment

48-52

Zerio Plus • EMS • Sygno-Fi • Euro-Fi • Scope

Power Supplies & Door Retainers

53

Power Supplies • Door Retainers • Over Door Closers

Beam & Flame Detection

54-55

Fireray 5000 • Fireray 3000 • Fireray One • OSID
Firebeam Xtra • Firebeam BLUE

Air Sampling

56-57

Vesda By Xtralis

Voice Alarm System & Emergency Call System

58-59

Baldwin Boxall • Penton • Illumino Ignis • TOA • Baldwin Boxall Omnicare

Vox Ignis

60-61

Vox Ignis Emergency Call Systems • Vox Ignis Assist Call Systems

Refuge Systems

62-65

KTP • Hoyles • C-TEC

Service Equipment

66-67

Solo Test Cans • Solo 365 Kits • Solo Kits • Testfire Kits • Scorpion

Emergency Lighting & Signage

68-69

Emergency Lighting • Emergency Signs

Linear Heat Cable

70

Patol Linear Heat Cable

Water Detection

71

Hydrosense Water Leakage Detection System

Temporary Site Alarm

72

Evacuator Site Master • Howler Site Alert RF

AOV Systems

73-75

Smoke Ventilation Panels • Chain Actuators • Folding Arm Brackets • Inputs • Haes • Geze

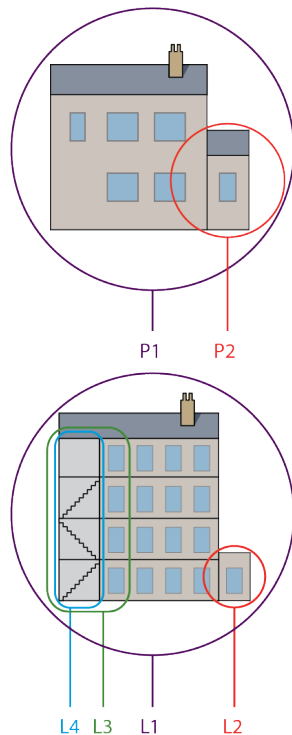
Domestic Detection

76-77

C-Tec Domestic Range • BS5839-6:2019 Guidance • Aico 140 Range
• Aico 1000 Range • Aico 3000 Range

BS5839-1:2017

The information provided in this guide is provided to you in good faith on the basis of information supplied to us. While every effort has been made to ensure that the content is accurate, we cannot guarantee the accuracy of the information and accept no liability for any errors and/or misrepresentations.



Fire Alarm and Detection Systems are categorised in the following way:

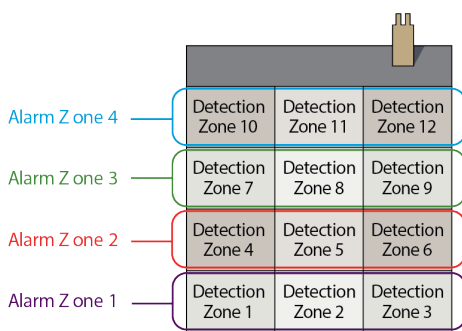
Property Protection Fire Systems

- P AFD designed primarily to protect property
- P1 AFD installed throughout all areas
- P2 AFD installed only in defined areas

Life Protection Fire Systems

- L AFD designed to primarily protect Human Life
- L1 AFD installed throughout all areas
- L2 AFD installed in defined areas in addition to L3
- L3 AFD installed in escape routes and rooms or areas opening onto these routes
- L4 AFD installed in escape routes comprising circulation areas and spaces such as corridors & stairways
- L5 A non-prescriptive system in which protected area(s) and/or the location of detectors is designed to satisfy a specific fire risk objective (other than that of L1 to L4)
- M System designed to be operated manually (no AFD)

***AFD - Automatic Fire Detection**

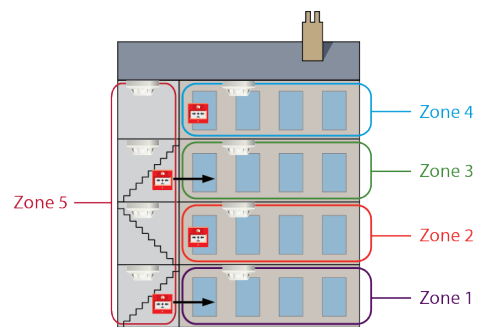


Alarm Zones

An alarm zone is clearly defined within the standard but generally is an area of the building coinciding with the fire compartment boundaries. There must be a clear break between these alarm zones to ensure alert and evacuation messages are not overheard from adjacent areas.

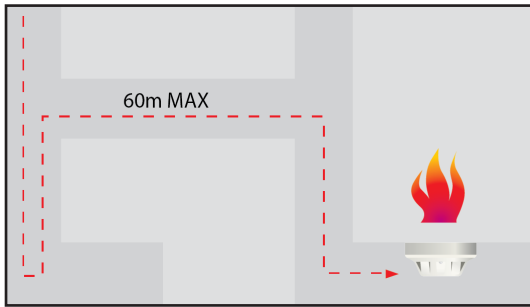
The only other criteria is that an alarm zone may consist of a number of detection zones but not vice versa.

Alarm zones are only required when phased or staged evacuation is required. It is therefore important that care should be taken to ensure only one message is heard at any one time, particularly where two alarm zones are attached.

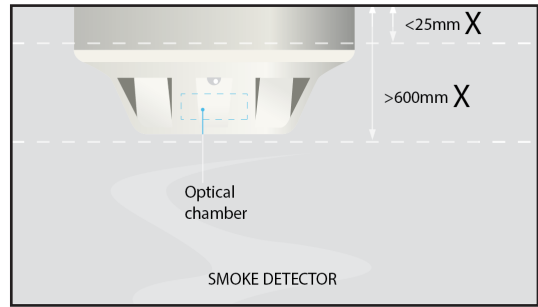


Detection Zones

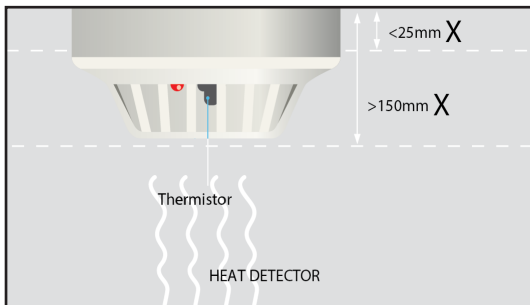
- A detection zone should cover no more than 1 storey, unless total floor area is less than 300m². Voids in the same fire compartment should be included in the same floor zone. The maximum floor area of a zone should not be greater than 2000m², except for some large open plan areas that incorporate manual call points only, which can be extended to 10,000m². The maximum search distance for the fire fighters to see the seat of the fire within a zone should not exceed 60m assuming the route taken is the worst possible option. Vertical structures like stairwells, lift shafts etc., should be considered as separate zones.
- A manual call point within a staircase should be connected to the zone associated with that floor and ideally be mounted on the accommodation side of the corridor exit. Automatic sensors on the stairwell remain as part of the stairwell detection zone.



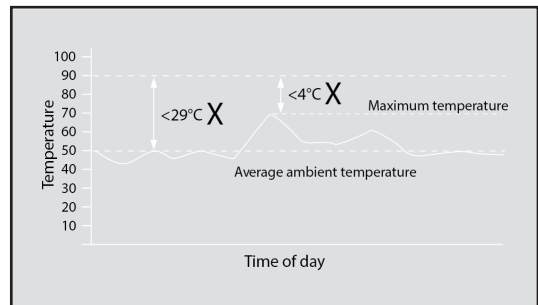
A person searching for a zone for a fire in a non-addressable fire system should not have to travel more than 60m to identify the source of a fire.



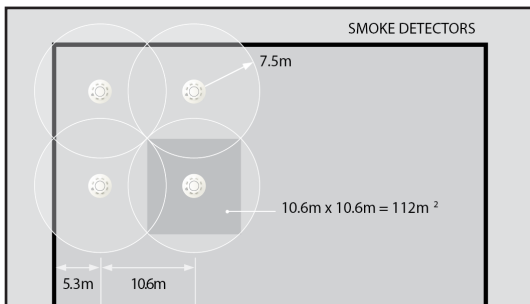
The sensing element of a smoke detection device (optical smoke or ionisation chamber) should not be less than 25mm below ceiling, and not greater than 600mm below ceiling.



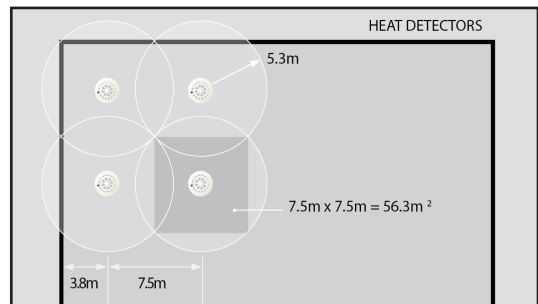
The sensing element of a heat detection device should not be less than 25mm below ceiling, and not greater than 150mm below ceiling.



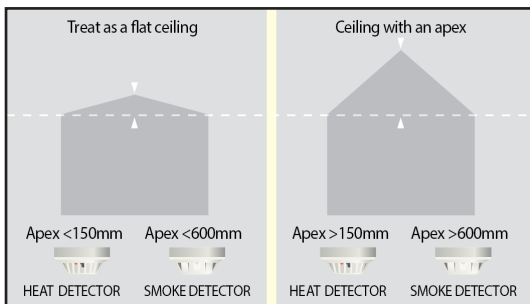
The minimum static response to heat devices should not be less than 29°C above the highest temperature the device can expect to experience.



When mounted on a flat ceiling, smoke detection devices have an individual coverage of 7.5m radius. However these radii must overlap to ensure there are no 'blind spots'. Therefore individual coverage can be represented by a square measuring 10.6m x 10.6m giving an actual area coverage of 112m² per device.



When mounted on a flat ceiling, heat detection devices have an individual coverage of 5.3m radius. However these radii must overlap to ensure there are no 'blind spots'. Therefore individual coverage can be represented by a square measuring 7.5m x 7.5m giving an actual area coverage of 56.3m² per device.

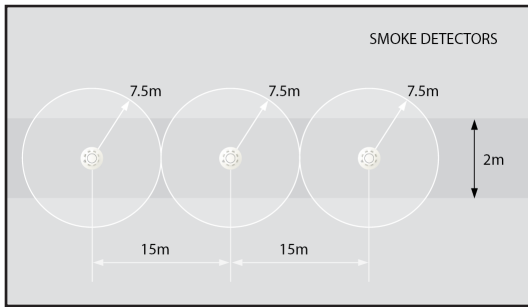


For ceilings that feature an apex: as long as the height of the apex from the rest of the ceiling is less than 150mm for heat detectors or less than 600mm for smoke detectors, then these can be treated the same as flat ceilings. For higher apexes, a device should be installed at the highest point. The distance to adjacent devices can be increased by 1% per degree of angle of the roof up to a maximum of 25%.

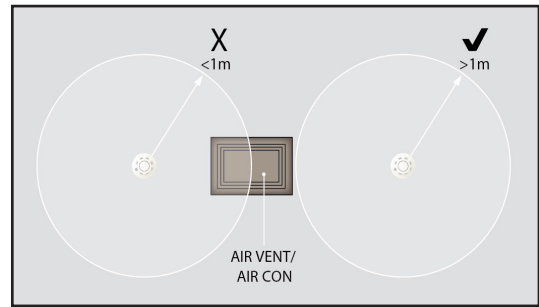
Response	All categories of system	
Max Height	General Area	10% of Area
Heat RoR	9m	10.5m
Heat Fixed	7.5m	10.5m
Smoke/CO point	10.5m	12.5m
Optical Beam Normal Sensitivity	25m	28m
Optical Beam enhanced Sensitivity	40m*	43m*
ASD General Limit	10.5m	12.5m
ASD Class C with 5 holes	15m	18m
ASD Class C with 15 holes	25m	28m
ASD Class B with 15 holes	40m	43m

*Supplemented detection recommended unless risk of stratification is minimal.

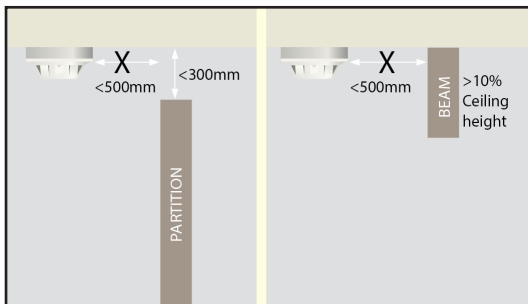
BS5839-1:2017



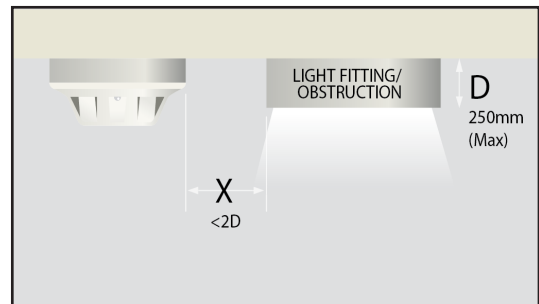
In corridors less than 2m wide the horizontal spacing of detectors may be increased, the areas of coverage need not overlap as in the case of a room. Any corridor over 2m wide is deemed a room and device spacing should follow the standard for rooms.



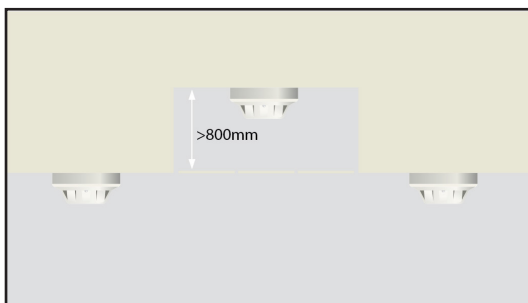
Do not site detectors less than 1m from air supply points or air circulating units.



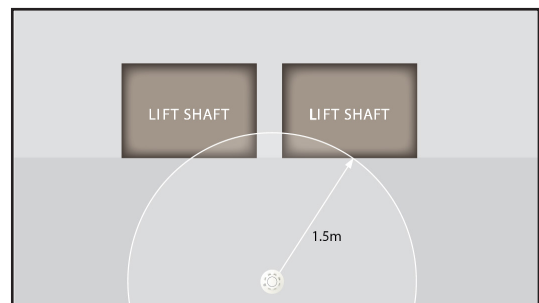
A device should not be mounted within 500mm of any obstruction. If the top of a solid partition is less than 300mm from ceiling then treat it as a wall. Similarly, ceiling obstructions such as beams should be treated as walls if deeper than 10% of the ceiling height.



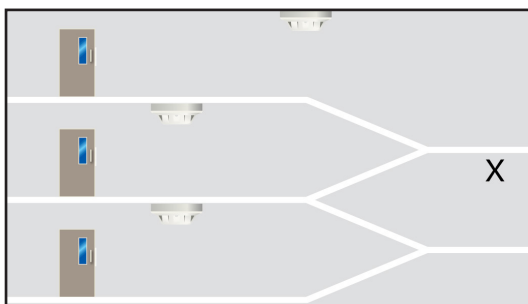
Never mount devices closer than twice the depth of light fittings or other obstructions on the ceiling.



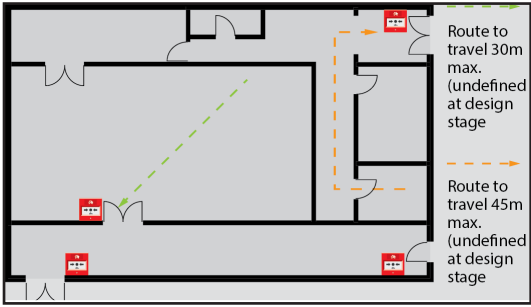
Voids less than 800mm in height need not have independent coverage, unless fire or smoke is able to spread from one area to another through the void or risk assessment shows AFD (Automatic Fire Detection) to be necessary.



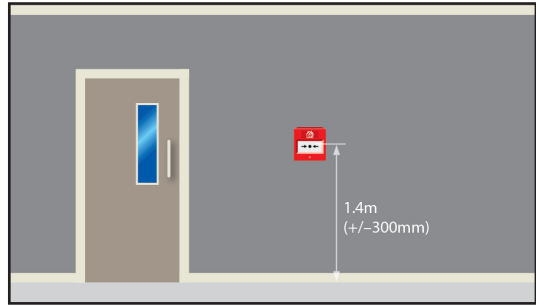
Vertical shafts like lifts and open stairways should have a device mounted within 1.5m of any opening. (This is not necessary for enclosed stairways, because as noted below, there are detectors on every landing within the stairway).



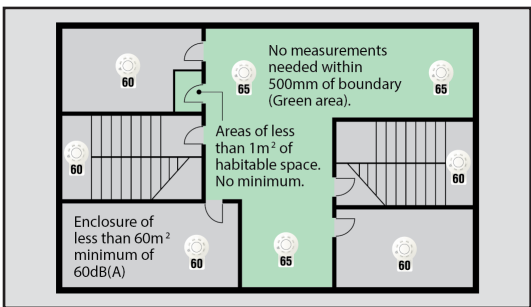
Enclosed stairways should have a detector at the top of the stairway and on each main landing.



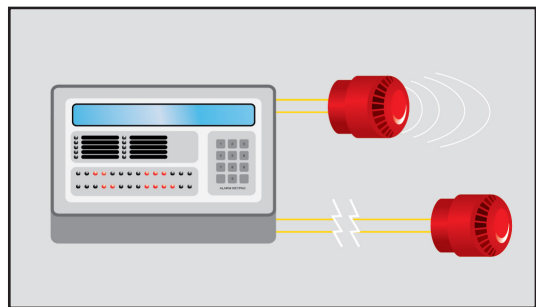
A person should not have to travel more than 45m to reach a manual call point, for a defined escape route (25m if significant proportion of occupants have limited mobility or rapid fire development is likely). For an undefined route a person should not have to travel more than 30m to reach a manual call point (16m if significant proportion of occupants have limited mobility or rapid fire development is likely).



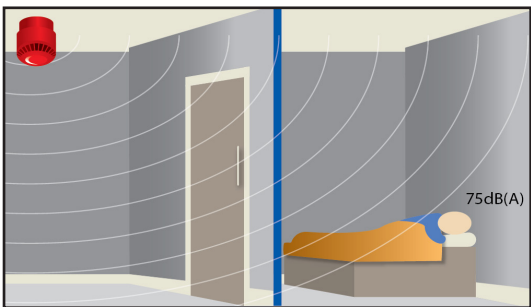
The centre of the element of a manual call point should be positioned 1.4m (+/- 300mm) from floor level. Unless a wheelchair user is likely to be the first person to raise the alarm. (Between 800-1200mm according to Doc. M. + DDA)



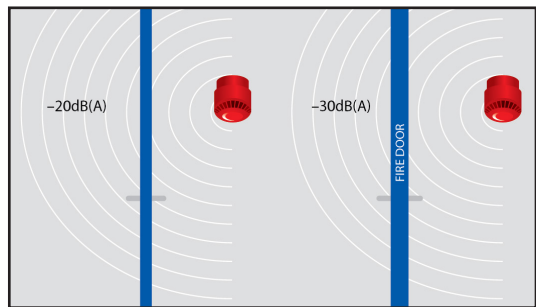
The minimum sound level should be 65dB(A) or 5dB(A) above a background noise which is louder than 60dB(A) (if lasting more than 30 seconds) and at a frequency of between 500Hz and 1000Hz. The maximum sound level should not be greater than 120dB(A) at any normally accessible point. May be reduced to 60dB(A) in stairways, enclosures up to 60m² and specific points of limited extent.



Sounder device cabling should be arranged so that in the event of a fault at least one sounder will remain operational during a fire condition.



For areas where people are sleeping, sounder devices should produce a minimum 75dB(A) at the bed-head with all doors shut. In buildings providing sleeping accommodation for deaf or people with impaired hearing, bedrooms should have both audible and visual alarms. (Note: Visual Alarm Devices are not intended to wake sleeping persons).



Decibel loss occurs through doors: approximately -20dB(A) through a normal door, and approximately -30dB(A) through a fire door.

Unless a sounder is installed in a bedroom, it is unlikely that 75dB(A) will be achieved.

INSTALLATION EQUIPMENT

CABLE

Part No.	Description
TC0064	NoBurn Cable 1.5mm, 2 Core - 100m Roll - Red
TC0070	NoBurn Cable 1.5mm, 2 Core - 100m Roll - White
TC0067	NoBurn Cable 1.5mm, 4 Core - 100m Roll - Red
TC0068	NoBurn Enhanced Cable 1.5mm, 2 Core - 100m Roll - Red
FP2C-1.5-R	Pirelli FP200 Gold 2 Core 1.5mm - 100m Roll - Red
FP2C-1.5-W	Pirelli FP200 Gold 2 Core 1.5mm - 100m Roll - White
FP4C-1.5-R	Pirelli FP200 Gold 4 Core 1.5mm - 100m Roll - Red
FP2CE-1.5-R	Pirelli FP200 Plus Enhanced 2 Core 1.5mm - 100m Roll - Red



ACCESSORIES

Part No.	Description
S2GY	Earth Sleeving 2mm G/Y - 100m Roll
GLANDS-RED	20mm IP68 Cable Glands - Red - Pack Of 10
GLANDS-WHITE	20mm IP68 Cable Glands - White - Pack Of 10
GLANDS-BLACK	20mm Glands Black - Pack Of 10
1LCW608	Linian Single Clip 6-8mm White Unit - Pack Of 100
1LCW68/2	Linian Double Clip 6-8mm White Unit - Pack Of 100
1LCR608	Linian Single Clip 6-8mm Red Unit - Pack Of 100
1LCR68/2	Linian Double Clip 6-8mm Red Unit - Pack Of 100
PCLIPRED	P Clip LSF 1.5mm Cable - Red - Pack Of 50
PCLIPWHITE	P Clip LSF 1.5mm Cable - White - Pack Of 50
TC0015	7-7.7mm LSF Twin Saddles - Red - Pack Of 50
TC0016	7-7.7mm LSF Twin Saddles - White - Pack Of 50
ARB12RED	All Round Band 12mm Pack - Red
TC0071	Shroud 20mm - Red - Pack Of 10
TC0072	Shroud 20mm - White - Pack Of 10
TC0034	200mm Stainless Steel Cable Tie - Pack Of 100
TC0032	Cable Tie 200 x 4.8 - Black - Pack Of 100
TC0033	Cable Tie 300 x 4.8 - Black - Pack Of 100
TC0028	IP68 Locknut 20mm - Red - Pack Of 10
TC0030	IP68 Locknut 20mm - White - Pack Of 10
TC0051	M4X16 Brass Panhead Screws - Box Of 100
TC0052	M4X20 Brass Panhead Screws - Box Of 100
242-222-010	Tub of 500 Red Wall Plugs and 8 x 1 1/2 Screws
TC0058	Firemate Sealant
TC0036	Circular Dry Lining Box, Double Back Entry 35mm Deep
TC0050	Ceiling Rose Adaptor
T10001	Cablesafe Metal Trunking Clip - Pack Of 100
TC0059I	20mm Galvanised U Box - Individuals
TC0075I	20mm Galvanised Y Box - Individuals



RAPID BRACKET

Part No.	Description
RB0001	Rapid Bracket Kit 1-3m Telescopic
RB0002	Rapid Holesaw 165mm c/w Arbor 32-210mm
RB0003	Rapid Tie Tension
RB0004	Rapid 25mm dia x 8mmthick x M5 Neodymium Stud Magnet



ENGINEER STARTER KITS

ABSOLUTE ESSENTIALS

Part No.	Description
T10003	Engineers Fuse Kit
T10004	Engineers Resistor & Capacitor Kit
T10014	Engineers Call Point Key Kit
T10017	Emergency Lighting Test Key Kit
T10018	Fire Alarm & Emergency Lighting Design Stamp Kit
T10019	Fire Alarm & Emergency Lighting Engineers Key Ring
T10020	Fire Extinguisher Design Stamp Kit
T10021	Security Design Stamp Kit
T10022	Engineers Fire Brigade Key Ring
T10045	Fire Panel On Test Magnet
T10050	Fire Installers Fixing Case
T10051	Fire Alarm Engineers Relay Kit



PROGRAMMERS AND LEADS

Part No.	Description
TCH-B200	Hochiki Address Programmer
SA7800-870APO	Apollo Loop Tester
X187LS	Kentec Download Lead
USBRS232	USB to RS232 Converter
020-891	Morley IAS USB Upload/Download Lead
SAF7070000	C-Tec XFP Upload/Download Lead
HF-TLD-01	Hyfire Upload/Download Lead
26-2850	Ampac Upload/Download Lead
9-30419	Airsense Upload/Download Lead
UP-001	RS232 9-way to 3-way plug in connector (upload/download lead)
UP-006	MX Pro 4 USB Upload/Download Lead
I50009	MX Pro 5 Programming Lead USB - A To B Cable
PA10010	SmartX Upload/Download Lead



TOOLS

Part No.	Description
ACT CHROME	ACT Battery Tester - Chrome
3004369801	Fluke Sound Meter
115	Fluke Multimeter True RMS Digital Multimeter 600v AC/DC
T49193	Screwdriver SLP/PZ - Set Of 8
T4404A	Hexagon Key Metric - Set Of 7
T4365250	SureDrive Wrench 250mm
LM-100	Fluke Light Meter



BATTERIES & ENCLOSURES

BATTERIES & ENCLOSURES

Part No.	Description
NP1.2-12	12V 1.2Ah Sealed Lead Acid Battery - BOX OF 24
NP2.3-12	12V 2.3Ah Sealed Lead Acid Battery - BOX OF 20
NP3.4-12	12V 3.4Ah Sealed Lead Acid Battery - BOX OF 10
NP7-12	12V 7.0Ah Sealed Lead Acid Battery - BOX OF 8
NP9-12	12V 9.0Ah Sealed Lead Acid Battery - BOX OF 8
NP12-12	12V 12.0Ah Sealed Lead Acid Battery - BOX OF 4
NP18-12	12V 18.0Ah Sealed Lead Acid Battery - BOX OF 4
NP24-12	12V 24.0Ah Sealed Lead Acid Battery - BOX OF 2
NP38-12	12V 38.0Ah Sealed Lead Acid Battery - BOX OF 1
2501185	Small Battery Enclosure - Up To 2 x 7Ah
2501186	Large Battery Enclosure - Up To 2 x 38Ah



ANCILLARY FIRE EQUIPMENT

A complex world needs clever products to help solve practical problems. The products are developed with the cooperation of system design and technical support.

MAINS ISOLATOR

Part No.	Description
400-210W/R	Fire System Secure Mains Voltage Safety Isolator: Tamperproof Double Pole Safety Isolation Switch For Fire And Safety Systems. Key-Switch Operation, Fused At 4A, Mounted On A Single Gang Plate, White Or Red, Supplied Complete With Back Box
BF319	Fire Alarm Control Panel Mains Keyswitch (Excludes Back Box)
MSB-47WH	Back Box For BF319



24V RELAY

Part No.	Description
BF376	24V DC 5A Boxed Relay - Plate Mounted



MULTI-FUNCTION RELAY

Part No.	Description
500-0002W/R	Multi-Function Relay Boxed: 9.5-42V DC Or 7.5-30V AC Coil Trigger Range, DPCO 230V AC 6A Fused Contacts, Pulsed Anti-Latch Option, Mounted On A Single Gang Plate



TIMER RELAY

Part No.	Description
500-640W/R	Zone Detection Circuit Timed Isolation Unit, Zone Isolation Switch, 24V DC, With Automated Time-Out Facility To Reactivate Circuit After 2,4,6,8 Or 10 Hours, Indications And Buzzer



REMOTE INDICATOR

Part No.	Description
BF318	Square Remote Indicator
53832-070	Apollo Mini Desk Remote
RL-01	Remote Indicator



DIGITAL TIMESWITCH

Part No.	Description
TR611 TOP3	Theben Digital DIN Rail Time Switch 230 V ac, 1-Channel



FIREMANS SWITCH

Part No.	Description
FMS-SURF	Stainless Steel Fireman's Switch In A Surface Housing. Size 155x125x76mm
FMS-FLUSH	Stainless Steel Fireman's Switch In A Flush Housing. Size 155x125x76
FMS-KEY	Drop Key For Use On FMS-FLUSH & FMS-SURF



FIRE SAFETY COMMISSIONING ACCESSORIES

Part No.	Description
A50001	A4 Fire Safety Document Cabinet
O10001	A4 Fire Alarm & Emergency Lighting Log Book
A3FRAME	A3 Zone Chart Frame



DUALCOM



The UK's fastest selling and most used dual signalling system!

DualCom GradeShift



Offering installers a reliable product that is easy to install, all on a single piece of hardware platform for any grade of risk. Providing multiple signalling paths that embrace all available technologies.

DualCom GradeShift range for every grade of risk with interchangeable EN Grades. Single path options SP2 and SP3 utilise all mobile networks via our WorldSIM to signal an alarm and are the ideal solution where there is no telephone line available.

DUALCOM & ACCESSORIES

Part No.	Description
DUALCOM	DualCom Unit Inc. First Year Monitoring
BF560-12	12V 2A EN54-4/A2 Boxed Power Supply - Max. 3.2Amp Batteries
BF360-SP	STU Mounting Plate For BF560-12

GSM-AUTO DIALLER



FOR SMS ALARM NOTIFICATIONS

- Recieve Instant SMS notifications
- Easy setup by SMS, PC, App or Web
- Operates on any mobile network
- Rock-solid reliability
- 3 Year Warrenty Standard
- 7-day phone support



GSM-AUTO DIALLER

Part No.	Description
G1/4G	4G GSM Auto Dialler (Requires Pay-As-You-Go SIM)

EVACUATION ALERT SYSTEMS



The easy way to ensure you have the BS 8629 Code of Practice covered EvacGo is our evacuation alert system, providing peace of mind that you're meeting all the BS 8629 recommendations. EACIE (Evacuation Alert Control & Indicating Equipment) is now strongly recommended in England for all tall buildings containing flats with a storey located at a height of 18 metres or more and is mandatory in Scotland. The EACIE must operate completely independently of fire detection systems and be designed to support any evacuation strategy chosen by the fire and rescue service.

EVAC GO PANELS

Part No.	Description
SP-8629-08	EvacGo controller c/w 1 loop card expandable to 4 and 8 evacuation zones including LED indication.
SP-8629-16	EvacGo controller c/w 1 loop card expandable to 4 and 16 evacuation zones including LED indication.
SP-8629-24	EvacGo controller c/w 1 loop card expandable to 4 and 24 evacuation zones including LED indication.
SP-8629-32	EvacGo controller c/w 1 loop card expandable to 4 and 32 eva
SP-8629-08/FT	EvacGo controller c/w 1 loop card expandable to 4, designated fault tolerant network card and 8 evacuation zones including LED indication
SP-8629-16/FT	EvacGo controller c/w 1 loop card expandable to 4, designated fault tolerant network card and 16 evacuation zones including LED indication.
SP-8629-24/FT	EvacGo controller c/w 1 loop card expandable to 4, designated fault tolerant network card and 24 evacuation zones including LED indication.
SP-8629-32/FT	EvacGo controller c/w 1 loop card expandable to 4, designated fault tolerant network card and 32 evacuation zones including LED indication.
SP-8629-00/FT	EvacGo controller c/w 1 loop card expandable to 4, designated fault tolerant network card in a deep enclosure with NO display



EVAC GO ANCILLARIES

Part No.	Description
MXP-502	EvacGo additional loop card
MXM-546	EvacGo separate battery enclosure (45Ah) – if required
MXP-501	EvacGo remote battery temperature sensor



EVAC GO FIELD DEVICES

Part No.	Description
AXIS-CWS/W	Open area conventional wall sounder – White (EN54-3) Requires AXIS-WSM
AXIS-CWSV/W	Open area conventional wall sounder beacon – White (EN54-3 & EN54-23) Requires AXIS-WSM
AXIS-WSM	Addressable sounder interface module (EN54-17)
LVMX100	Short circuit isolator module
20-LVMX100-BX	Single isolator in plastic mounting box
20-DLVMX100-BX	Dual isolator in plastic mounting box
20-VMMC120-ADV	Single relay output module with built in isolator
20-VMC100-ADV	Single relay powered output module with built in isolator
20-VMC120-ADV	Wall Mounted Single relay output module with built in isolator
AXIS-PU	Handheld programming unit



BS 8629

BS 8629:2019 is a new standard. It is the code of practice for the design, installation, commissioning, and maintenance of evacuation alert systems for use by fire and rescue services in buildings containing flats.

ADDRESSABLE FIRE ALARM PANELS



The **MX-5000 Series** is the next generation of analogue addressable fire alarm control panels approved to EN54 parts 2, 4 & 13 and has been developed following extensive research involving industry professionals, customers and end users.

MX PRO 5 RANGE

Part No.	Description
GO	Go Panel (up to 50 Devices Non – Networkable)
GO+	Go+ Panel (Full Protocol Quantity Non – Networkable)
GOP-002	Access Enable Key Switch
MX-5101	1 Loop Panel (1 Loop Card Fitted & Tested)
MX-5201	1 Loop Panel Extendable To 2 Loops (1 Loop Card Fitted & Tested)
MX-5401	1 Loop Panel Extendable To 4 Loops (1 Loop Card Fitted & Tested)
MX-5802	2 Loop Panel Extendable To 8 Loops (2 Loop Cards Fitted & Tested)
MX-5802/FT	2 Loop Panel Extendable To 8 Loops (2 Loop Cards Fitted & Tested) Fault-Tolerant



MX PRO 5 REPEATER PANELS

Part No.	Description
MX-5010	Remote Display Terminal With Standard Network Interface - 24V DC
MX-5020	Remote Control Terminal With Standard Network Interface - 24V DC
MX-5010/FT	Remote Display Terminal With Fault-Tolerant Network Interface - 24V DC
MX-5020/FT	Remote Control Terminal With Fault-Tolerant Network Interface - 24V DC
MXP-567	Loop Driver Card (Nittan)
MX-5030	Remote Control Terminal With Standard Network Interface - 24V DC Inc - Dedicated Evac Button and 4x Control Buttons
MX-5030/FT	Remote Control Terminal With Fault Tolerant Network Interface - 24V DC Inc - Dedicated Evac Button and 4x Control Buttons



MX PRO 5 LOOP DRIVER AND NETWORK CARDS

Part No.	Description
MXP-502	Loop Driver Card for MX-5400/5200 (Apollo Or Hochiki Protocol)
MXP-567	Loop Driver Card (Nittan Protocol)
MXP-503	Standard Network Card
MXP-509	Fault Tolerant Network Card



MX PRO 5 PERIPHERALS

Part No.	Description
MXP-034	4 Way Sounder Card
MXP-035	4 Way Relay Card
MXP-511	Access Enable Key Switch For MxPro 5
MXP-512	On Board Printer For MX-5200/5400/5800
MXP-513M-050RD	LED Card - 50 Zone Fire (RED) Medium
MXP-513L-050RD	LED Card - 50 Zone Fire (RED) Large
MXP-513L-100RD	LED Card - 100 Zone Fire (RED) Large
MXP-536	8 Way Zone Card



MX PRO 5 BEZELS

Part No.	Description
MXM-501	Semi-Flushing Bezel For Small Enclosure
MXM-502	Semi-Flushing Bezel For Medium Enclosure
MXM-503	Semi-Flushing Bezel For Large Enclosure
MXM-536	Semi-Flushing Bezel For Extended Enclosure
MXM-521	Semi-Flushing Bezel For 5010/5020 Enclosure
MXM-509	Semi-Flushing Bezel For 5030 Enclosure



ADDRESSABLE FIRE ALARM PANELS



TouchControl is a 10", high-resolution touch screen Remote Control Terminal with active maps and zone plans. It is a fire panel and network node in its own right and works on Advanced's standard and fault tolerant networks. It is compatible with the MxPro and Axis EN fire panels. Zone information is presented via both the unit's colour coded, easy to navigate interface and the active maps that are easily configured using the Dynamix Tools Map App.

TOUCH CONTROL REMOTE TERMINAL

Part No.	Description
TOUCH-10	Touch-Screen Terminal (Standard Network)
TOUCH-10/FT	Touch-Screen Terminal (Fault Tolerant Network)
TOUCH-10-SBB	Touch Screen Terminal Surface Back Box



AlarmCalm is fast, easy to use and simple to configure. It can scale from small installations to large sites with complicated cause and effect. Using Alarm Verification and Investigation Delay Technology, AlarmCalm allows additional time to respond, verify or investigate an alarm before the fire system goes into full alarm state. AlarmCalm uses Advanced's new Building Area concept which allows alarm management strategy within a building to be easily managed.

ALARMCALM ACKNOWLEDGEMENT BUTTON

Part No.	Description
MXP-541A-002	AlarmCalm Button With Buzzer (Apollo)



GRAPHICAL SOFTWARE (Requires BMS/Graphics Interface)

Part No.	Description
PC-NET-005-L1	Graphical Control software* Standard version up to 3 panels
PC-NET-005-L2	Graphical Control software* Standard version up to 15 panels
PC-NET-005-L2P	Graphical Control software* Premium version up to 15 panels
PC-NET-005-L3	Graphical Control software* Standard version up to 200 panels
PC-NET-005-L3P	Graphical Control software* Premium version up to 200 panels



- BacNet/Modbus Protocol Integration
- Alarm & Isolation
- 640 Configurable Object/Tags
- Low Voltage 12vDC - 24vDC
- Windows-based Programming
- Configurable using Advanced Cause & Effect
- Configurable on a Zone/Point basis per Object for Fire or Fault

BACNET/MODBUS INTEGRATOR (Requires BMS/Graphics Interface)

Part No.	Description
MXP-642	Commander - BacNet/ModBus (IP) Interface
MXP-642C	Commander - BacNet/ModBus (IP) Interface - Configured
23-PSU/250	12V Regulated Power Supply Unit
UP-001	RS232 9-way to 3-way plug in connector (upload/download lead)



BMS/GRAPHICS INTERFACE

Part No.	Description
MXP-510-BX	EvacGo additional loop card
MXP-510-BX/FT	EvacGo separate battery enclosure (45Ah) – if required



EXTINGUISHANT ALARM PANELS



ExGo is used all over the world to protect sensitive and strategic assets such as server and switch rooms and historic and cultural collections. Compatible with a range of detection devices it's performance, ease of use and advanced features set it ahead of the competition.

EXGO GAS PANEL

Part No.	Description
EX-3001	Extinguishing Control Panel - 3 Detection Zone + Single Release Outlet
EXM-001	Semi-Flushing Bezel For EX-3001 Panel



STATUS INDICATOR PANEL

Part No.	Description
EX-3020	Status Indicator With LCD & LED Indicators
EX-3021	Status Indicator With LCD & LED Indicators & Mode Select Key Switch
EX-3030	Status Indicator With LCD & LED Indicators & Manual Release Button
EX-3031	Status Indicator With LCD & LED Indicators, Manual Release Button & Mode Select Key Switch
EXM-002	Recessing Bezel
EXP-005	Switch End-Of-Line Module (5 Off)
EXP-006	Spare Zone Active End-Of-Line Module (5 Off)



EXGO ACCESSORIES

Part No.	Description
EXP-003-001	Hold Off Switch In Plastic Enclosure
EXP-004-001	Abort Switch In Plastic Enclosure



Designed and manufactured to the highest standards in a quality controlled environment and with European EN12094-1 approvals, the Sigma XT extinguishant releasing panel offers outstanding value and performance for all small to medium fixed firefighting installations.

SIGMA XT

Part No.	Description
K11031M2	Sigma XT 1 Area, 3 Zone Extinguishant Control Panel



SIGMA XT+

Part No.	Description
K21021M3	Sigma XT+ 1 Area, 2 Zone Extinguishant Control Panel
K21041M3	Sigma XT+ 1 Area, 4 Zone Extinguishant Control Panel
K21042M3	Sigma XT+ 2 Area, 4 Zone Extinguishant Control Panel
K21081M3	Sigma XT+ 1 Area, 8 Zone Extinguishant Control Panel
K21082M3	Sigma XT+ 2 Area, 8 Zone Extinguishant Control Panel



SIGMA ACCESSORIES

Part No.	Description
K91000M10	Sigma XT Extinguishant Hold Off, Green Button, Grey Lid & Box
KB91000M10	Sigma XT Extinguishant Hold Off, Red Button, White Lid & Box
K13470M10	Sigma XT System Abort Button Unit
K13520M10	Sigma XT Extinguishant Extract Key Switch Unit
K13480M10	Sigma XT Main/Reserve Duty Extinguishant Key Switch Unit



ADDRESSABLE FIRE ALARM PANELS



Founded 30 years ago Kentec Electronics has worked closely with their customers and end users enabling it to become the world leading safety control systems manufacturer. The Kentec name has become synonymous with world class products, great service and excellent support. Based in the UK, Kentec is a truly global supplier, exporting control equipment to over 80 countries worldwide and in many different languages.

SYNCRO AS LITE RANGE

The Syncro AS Lite is a one loop fire alarm panel capable of hosting up to 126 devices (Apollo), 240 devices (Argus Vega) or 127 devices (Hochiki). The Lite version is non expandable, non networkable with no I/O expansion support.

Part No.	Description
LA81161 M2	Syncro AS Lite 1 Loop Panel 16 Zones Surface Mount, No Key Switch - Apollo
LA80161 M2	Syncro AS Lite 1 Loop Panel 16 Zones Surface Mount With Key Switch - Apollo
LH81161 M2	Syncro AS Lite 1 Loop Panel 16 Zones Surface Mount, No Key Switch - Hochiki
LH80161 M2	Syncro AS Lite 1 Loop Panel 16 Zones Surface Mount With Key Switch - Hochiki



SYNCRO AS RANGE

The Syncro AS is available with one or two detection loops capable of hosting up to 126 devices (Apollo), 240 devices (Argus Vega) or 127 devices (Hochiki). Suitable for all small to medium sized fire detection systems, Syncro AS control panels can be expanded and networked

Part No.	Description
A81161 M2	Syncro AS 1 Loop Panel 16 Zones Surface Mount, No Key Switch - Apollo
A80161 M2	Syncro AS 1 Loop Panel 16 Zones Surface Mount With Key Switch - Apollo
H81161 M2	Syncro AS 1 Loop Panel 16 Zones Surface Mount, No Key Switch - Hochiki
H80161 M2	Syncro AS 1 Loop Panel 16 Zones Surface Mount With Key Switch - Hochiki
A81162 M2	Syncro AS 2 Loop Panel 16 Zones Surface Mount, No Key Switch - Apollo
A80162 M2	Syncro AS 2 Loop Panel 16 Zones Surface Mount With Key Switch - Apollo
H81162 M2	Syncro AS 2 Loop Panel 16 Zones Surface Mount, No Key Switch - Hochiki
H80162 M2	Syncro AS 2 Loop Panel 16 Zones Surface Mount With Key Switch - Hochiki



SYNCRO REPEATERS

Part No.	Description
K67000 M1	Syncro View Repeater Panel, No Key Switch - PSU Not Fitted
K67001 M1	Syncro View Repeater Panel With Key Switch - PSU Not Fitted
K67750 M1	Syncro View Repeater Panel, No Key Switch - 750mA PSU
K67751 M1	Syncro View Repeater Panel With Key Switch - 750mA PSU



SYNCRO PERIPHERALS

Part No.	Description
K555	Syncro Fault Tolerant Network Interface Card
M2FCLGT	Semi Flushing Collar
X187LS	Kentec Lite Download Lead



The Addressable Matrix System uses flexible, fibre optic light guides to illuminate areas on a floor plan, laid over a high-resolution grid.

The unique system dispenses completely with wiring and enables indicators to be moved, removed or added on site without the need for any wiring. Ideal for buildings such as hospitals where the building layout may evolve over a period. As the building changes, so too can Syncro Matrix, with very little cost or disruption. The addressable Matrix can be supplied with or without common LED's and controls. Optional LED's indicate Power On, Fire, Fault and Disablement and optional controls are for Alarm Silence, Buzzer Silence, Lamp Test and Reset. It provides a clear, geographical indication of the fire alarm or other system activation enabling speedy identification of the source of an alarm or other events.



CONVENTIONAL FIRE ALARM PANELS



Founded 30 years ago Kentec Electronics has worked closely with their customers and end users enabling it to become the world leading safety control systems manufacturer. The Kentec name has become synonymous with world class products, great service and excellent support. Based in the UK, Kentec is a truly global supplier, exporting control equipment to over 80 countries worldwide and in many different languages.

SIGMA CP - FOUR WIRE (ACTIVE EOL)

The Sigma CP range of conventional fire control panels are high specification, fully featured control units designed for the most demanding conventional fire detection and alarm system applications. The KL1 range is supplied with Line Continuity Monitoring Units to meet the requirements that is a detector is removed any MCP's fitted to the system will still operate.

Part No.	Description
KL11020 M2	Sigma CP 2 Zone Conventional Control Panel Surface Mount With LCMU Included
KL11040 M2	Sigma CP 4 Zone Conventional Control Panel Surface Mount With LCMU Included
KL11080 M2	Sigma CP 8 Zone Conventional Control Panel Surface Mount With LCMU Included



SIGMA CP - TWO WIRE

The Sigma T11 Twin Wire range allows sounders, beacons, detectors and call points within one zone to run on the same pair of cables. Wiring sounders to the detection circuits eliminates the need to install sounder circuit cables and also offers the ability to provide zoned or two stage sounder operation.

Part No.	Description
T11020 M2	Sigma CP 2 Zone 2-Wire Control Panel Surface Mount
T11040 M2	Sigma CP 4 Zone 2-Wire Control Panel Surface Mount
T11080 M2	Sigma CP 8 Zone 2-Wire Control Panel Surface Mount



SIGMA CP-A ALARMSENSE

The Sigma CP-A Alarmsense range consists of 2, 4 and 8 zone fire alarm panels. The alarmsense system enables all devices in a given zone to be wired to the same pair of cables thus greatly reducing the cabling and installation requirements, reducing costs. The Alarmsense range of devices includes smoke and heat detectors, call points, base sounders, sounder beacons and relay units.

Part No.	Description
KA11020 M2	Sigma CP-A Alarmsense 2 Zone Control Panel Surface Mount
KA11040 M2	Sigma CP-A Alarmsense 4 Zone Control Panel Surface Mount
KA11080 M2	Sigma CP-A Alarmsense 8 Zone Control Panel Surface Mount



SIGMA CP-R REPEATER

The Sigma CP-R Repeater is compatible with all Sigma CP control panels which have operating software version V2.0 or above. Repeaters are available with 2, 4 or 8 zones and in mains powered (K versions) or 24V powered (E versions).

Part No.	Description
E01020 L2	Sigma CP-R 2 Zone Repeater Panel 24V Surface Mount
E01040 L2	Sigma CP-R 4 Zone Repeater Panel 24V Surface Mount
E01080 L2	Sigma CP-R 8 Zone Repeater Panel 24V Surface Mount
K01020 M2	Sigma CP-R 2 Zone Repeater Panel 230V Surface Mount
K01040 M2	Sigma CP-R 4 Zone Repeater Panel 230V Surface Mount
K01080 M2	Sigma CP-R 8 Zone Repeater Panel 230V Surface Mount



SIGMA ACCESSORIES

Part No.	Description
M2FCLGT	Flushing Bezel
K16000 L2	Sigma DocBox Cabinet
S0005	Spare Keys



ADDRESSABLE FIRE SYSTEM



Global Fire Equipment (GFE) is a European-based manufacturer of high-quality, competitively-priced fire safety systems. Our aim is to deliver innovatively designed and fully certified fire safety systems, while at the same time offering a world-class customer service experience. GFE is a truly global player, supplying customers across more than 90 countries with state-of-the-art products and systems. Our equipment is installed in a myriad of buildings and prestigious premises worldwide.

ADDRESSABLE PANELS

Part No.	Description
G-1	G-ONE 1Loop Control Panel - Non Expandable
GEKKO-0	GEKKO 0 Loop Control Panel
GEKKO-2	GEKKO 2 Loop Control Panel
OCTO-2	OCTO+ 2 Loop Control Panel
OCTO-4	OCTO+ 4 Loop Control Panel
CHAMELEON-REP	Chameleon Control Repeater c/w RS422 Network Card



PERIPHERALS

Part No.	Description
GFE-NETCARD-D	Chameleon RS422 Network Communication Card
CHAMELEON-TCP-OWL	Chameleon OWL Graphical Interface Card
CHAMELEON-TCP-WEB	Chameleon Web Interface for Remote Access
OCTO-PRINTER	OCTO+ Printer Assembly
GFE-PPROLL	Printer Paper for OCTO-PRINTER



ZEOS ADDRESSABLE DETECTORS

Part No.	Description
ZEOS-AD-S	ZEOS Addressable Smoke Detector
ZEOS-AD-H	ZEOS Addressable Heat Detector
ZEOS-AD-SH	ZEOS Addressable Multisensor



ZEOS BASE

Part No.	Description
ZEOS-BASE	ZEOS Mounting Base



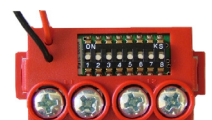
ADDRESSABLE MANUAL CALL POINTS

Part No.	Description
GFE-MCPE-AI	GFE Addressable Manual Call Point c/w Isolator incl. Cover
GFE-MCPE-AI-IP67	GFE Addressable Manual Call Point c/w Isolator, IP67 incl. Cover
GFE-MCPE-ADAPTOR	GFE Manual Call Point Adapter Plate
GFE-MCPE-KEYS	GFE Manual Call Point Reset Key (Pack of 10)



INTERFACES

Part No.	Description
GFE-IO-1	GFE Addressable 1-Channel I/O Module c/w Isolator
GFE-IO-2	GFE Addressable 2-Channel I/O Module c/w Isolator
GFE-IO-3	GFE Addressable 3-Channel I/O Module c/w Isolator
GFE-MIO	GFE Mains Switching I/O Module c/w Isolator
GFE-ZMU-1	GFE Addressable 1zone Monitoring Module
GFE-MULTI	GFE Multi I/O Module - 4 x ZMU + 3 x LSC + 2 x Aux. Relays
MAM(WHT)	Manually Addressed Module for Conventional Smoke / Heat Detectors
MAM(RED)	Manually Addressed Module for Conventional Manual Call Points
MAM(YEL)-VAD	Manually Addressed Module for Conventional VADs



ANCILLARIES

Part No.	Description
GFE-C-REM-IND	GFE Standard Remote Indicator with Flashing LED



GRAPHICAL SOFTWARE

Part No.	Description
OWL-1	OWL Graphical Software, 1 Panel
OWL-2-5	OWL Graphical Software, 2-5 Panels
OWL-6+	OWL Graphical Software, 6+ Panels



ADDRESSABLE AND CONVENTIONAL DEVICES



VULCAN 2 ADDRESSABLE AUDIO VISUAL

Part No.	Description
VULCAN2-ASI	VULCAN 2 Addressable Base Sounder c/w Isolator
VULCAN2-ABI	VULCAN 2 Addressable Base Beacon c/w Isolator
VULCAN2-ASBI	VULCAN 2 Addressable Base Sounder Beacon c/w/ Isolator
VULCAN2-LID	White Lid for VULCAN 2 Base Sounder



VALKYRIE ADDRESSABLE AUDIO VISUAL

Part No.	Description
VALKYRIE-AS	VALKYRIE Addressable Wall Mount Sounder, Red
VALKYRIE-ASI-IP65	VALKYRIE Addressable Wall Mount Sounder c/w Isolator, Red, IP65
VALKYRIE-AB	VALKYRIE Addressable Wall Mount Beacon, Red
VALKYRIE-AB-IP65	VALKYRIE Addressable Wall Mount Beacon c/w Isolator, Red, IP65
VALKYRIE-ASB	VALKYRIE Addressable Wall Mount Sounder Beacon, Red
VALKYRIE-ASB-IP65	VALKYRIE Addressable Wall Mount Sounder Beacon c/w Isolator, Red, IP65



ZEOS CONVENTIONAL BASE

Part No.	Description
ZEOS-DIODEBASE	ZEOS Diode Base



ZEOS CONVENTIONAL DETECTORS

Part No.	Description
ZEOS-C-S	ZEOS Conventional Smoke Detector
ZEOS-C-H	ZEOS Conventional Heat Detector
ZEOS-C-SH	ZEOS Conventional Multisensor



CONVENTIONAL MANUAL CALL POINTS

Part No.	Description
GFE-MCPE-C	GFE Conventional Manual Call Point, Red incl. Cover
GFE-MCPE-C-IP67	GFE Conventional Manual Call Point, Red, IP67 incl. Cover
GFE-MCPE-ADAPTOR	GFE Manual Call Point Adapter Plate
GFE-MCPE-KEYS	GFE Manual Call Point Reset Key (Pack of 10)



VULCAN 2 CONVENTIONAL BASE AUDIO VISUAL

Part No.	Description
VULCAN2-CS	VULCAN 2 Conventional Base Sounder c/w Lid
VULCAN2-CB	VULCAN 2 Conventional Base Beacon c/w Lid
VULCAN2-CSB	VULCAN 2 Conventional Base Sounder Beacon c/w Lid



VALKYRIE CONVENTIONAL WALL AUDIO VISUAL

VALKYRIE-CS	VALKYRIE Conventional Wall Mount Sounder, Red
VALKYRIE-CS-IP65	VALKYRIE Conventional Wall Mount Sounder, Red, IP65
VALKYRIE-CB	VALKYRIE Conventional Wall Mount Beacon, Red
VALKYRIE-CB-IP65	VALKYRIE Conventional Wall Mount Beacon, Red, IP65
VALKYRIE-CSB	VALKYRIE Conventional Wall Mount Sounder Beacon, Red
VALKYRIE-CSB-IP65	VALKYRIE Conventional Wall Sounder Beacon, Red, IP65



ADDRESSABLE FIRE ALARM PANELS



The C-Tec XFP range of analogue addressable fire panels available in three different formats: 1 loop 16 zone, 1 loop 32 zone and 2 loop 32 zone.
Panels can be networked if required, up to eight XFP master panels (any variant) may be interconnected.
Control panels are available in Apollo XP95/Discovery and Hochiki ESP protocols, all are fully LPCB approved to EN54 parts 2 & 4.

XFP ECONOMY RANGE

Part No.	Description
XFP501E/H	XFP Networkable Single Loop 16 Zone Control Panel (Hochiki)
XFP501E/X	XFP Networkable Single Loop 16 Zone Control Panel (Apollo)



XFP RANGE

Part No.	Description
XFP501/H	XFP Networkable Single Loop 32 Zone Control Panel (Hochiki)
XFP501/X	XFP Networkable Single Loop 32 Zone Control Panel (Apollo)
XFP502/H	XFP Networkable Two Loop 32 Zone Control Panel (Hochiki)
XFP502/X	XFP Networkable Two Loop 32 Zone Control Panel (Apollo)



XFP REPEATERS

Part No.	Description
XFP510-16	XFP Networkable Repeater Panel, 16 Zone, All Protocols
XFP510-32	XFP Networkable Repeater Panel, 32 Zone, All Protocols



XFP PERIPHERALS

Part No.	Description
CFP761	XFP Network Card For XFP 16 Zone, All Protocols
AFP711	XFP Network Card For XFP 32 Zone, All Protocols
XFP385	Flush Mount Bezel For XFP 32 Zone Master & Repeater Panel
XFP507	XFP Upload/Download Software, Win 2000/XP/Vista, C/W SAF7070000 Lead
SAF7070000	2M Programming Lead
BF359/3S	Stainless Steel Glazed Enclosure For XFP 1-2 Loop 32 Zone Panels. (Require Lock Kit)
BF359/3CL	Cam Lock Kit For BF359/3S Stainless Steel Enclosure
BF318	Metal Keys - 2 Pack
S-KEY	Red Plastic Key



ZFP RANGE

Part No.	Description
ZFP1/X	ZFP Touchscreen Controlled Addressable Fire Panel (Standard Cabinet)
ZFP2M/X	ZFP Touchscreen Controlled Addressable Fire Panel (Medium Cabinet)
ZFP2L/X	ZFP Touchscreen Controlled Addressable Fire Panel (Large Cabinet)



ZFP REPEATER PANEL

Part No.	Description
ZREP1F	ZFP Compact Controller (Flush)
ZREP1S	ZFP Compact Controller (Surface)



ZFP LOOP/NETWORK CARDS

Part No.	Description
ZHN	ZFP Network Card
ZO2LOOP/X	ZFP Three, Four, Seven & Eight Loop Expansion Card
ZO2EXT/X	ZFP Five & Six Loop Expansion Card



CONVENTIONAL FIRE ALARM SYSTEMS



C-Tec's award-winning CFP conventional fire panels are LPCB certified to the latest revisions of EN54 parts 2 and 4 and offers an array of user and installer friendly features. Supplied in an attractive flush or surface mountable plastic enclosure. 2, 4 and 8 zone versions are available, each featuring four conventional sounder circuits, class change and alert inputs, on-board fire and fault relays and combined keypad/key switch entry.

CFP TWO-WIRE ALARMSENSE FIRE PANEL

LPCB certified to EN54-2/4, C-Tec's CFP two-wire Alarmsense fire panel is designed to work with Apollo's Alarmsense range of detectors, call points, sounders and visual indicators. The CFP Alarmsense panel includes four conventional sounder circuits, class change & alert inputs and on-board fire & fault relays. A wide range of engineering functions are also provided including selectable zone delays, coincidence and non-latching zone facilities.

Part No.	Description
CFP702-2	CFP Alarmsense 2 Zone 2-Wire Control Panel
CFP704-2	CFP Alarmsense 4 Zone 2-Wire Control Panel
CFP708-2	CFP Alarmsense 8 Zone 2-Wire Control Panel
CFP760	CFP 8 Zone Repeater Panel
CFP761	CFP Network Driver Card



CFP STANDARD 2-8 ZONE CONVENTIONAL FIRE PANELS

A powerful conventional fire alarm panel offering an array of user and installer friendly features. A wide range of engineering functions including zone test, coincidence, zone delay & non-latching zones. Four conventional sounder circuits, two on-board relay outputs, two open-collector outputs, class change and alert inputs.

Part No.	Description
CFP702-4	CFP Standard 2 Zone Panel, LPCB Approved
CFP704-4	CFP Standard 4 Zone Panel, LPCB Approved
CFP708-4	CFP Standard 8 Zone Panel, LPCB Approved
CFP760	CFP 8 Zone Repeater Panel, Max 8 Per System
CFP761	CFP Network Driver Card
CFP762	CFP Relay Output Card, Reset/Fault/Aux/Remote
CFP763	CFP Relay Output Card, Reset/Fault/Aux/Remote/8z Relays
CFP764	CFP Relay Output Card (8 Output Per Zone Relays For CFP708-4)
CFP765	CFP Relay Output Card (4 Output Per Zone Relays For CFP704-4)
CFP766	CFP Relay Output Card (2 Output Per Zone Relays For CFP702-4)
S-KEY	Spare Key
FF502	4 Way Sounder Card
SAF0724801	Accessory Pack For CFP Panels



ACTIV CONVENTIONAL SMOKE & HEAT DETECTORS

C-Tec's Activ fire detectors are certified to the relevant parts of EN54-5/7 and include a host of features - plenty of working space, two ultra-bright LED indicator strips offering all round visibility, an ingenious detector/base locking mechanism and compatibility with virtually all known conventional fire alarm panels.

Part No.	Description
C4416	Activ Conventional Optical Smoke Detector
C4403A1R	Activ Conventional A1R 57° Heat Detector
C4403B	Activ Conventional B 85° Heat Detector
C4408D	Activ Diode Base



HUSH BUTTON

C-Tec's Hush Button was specifically designed to reduce the incidence of false alarms in houses of multiple occupation by providing reliable, fully monitored fire detection, alarm and silencing facilities INSIDE each individual flat or apartment. It can be looked upon as a miniature loop-powered single zone fire alarm controller that sits and is addressed on the analogue loop with the ability to communicate its status back to the host panel.

Part No.	Description
XFP508H	BS5839-6 Hush Button, Hochiki ESP, Double Gang Housing
XFP508X	BS5839-6 Hush Button, Apollo XP95/Discovery, Double Gang Housing



ADDRESSABLE FIRE ALARM PANELS



MAX panels are Multi-processor Fire Detection System suitable for system configurations of a wide range of installations. MAX panels are not a simple FACP but an advanced very powerful fire detection system that uses the CanBus technology. This standard, originally designed for operation in industrial environments, makes the system highly resistant to external factors as electrical disturbances and other sources of false alarms.



KEY FEATURES

- 7" Color Touch Screen Display and Multifunctional Repeaters
- Loop power 750 mA
- Native networking capabilities up to 128 Loop
- Config download and firmware updated with USB key
- 1600 Cause & Effect equations with Boolean logic

NON-NETWORKABLE PANELS

Part No.	Description
MA-1000-01	Morley-IAS Max Single loop (non-networkable) For System Sensor & Apollo protocol
MA-1000-03	Morley-IAS Max Single loop (non-networkable) For Morley-IAS, System Sensor & Apollo protocol
MA-1BZL	Morley-IAS Max MA-1000 Bezel

NETWORKABLE PANELS

Part No.	Description
MA-2000-01	Morley-IAS Max two loop (networkable) For System Sensor & Apollo protocol
MA-2000-03	Morley-IAS Max two loop (networkable) For Morley-IAS, System Sensor & Apollo protocol
MA-2BZL	Morley-IAS Max MA-2000 Bezel
MA-8000-01	Morley-IAS Max four loop, expandable to eight (networkable) For System Sensor & Apollo protocol
MA-8000-03	Morley-IAS Max four loop, expandable to eight (networkable) For Morley-IAS, System Sensor & Apollo protocol
MA-8BZL	Morley-IAS Max MA-8000 Bezel

REPEATER PANELS

Part No.	Description
MA-LIB2-01	Morley-IAS Max dual Loop card for MA-8000. includes mounting fixtures
E-SIB	Morley-IAS Max Communication dongle for CAN Bus & Serial TPP enablement (MA-2000 & MA-8000 only)

ADDRESSABLE FIRE ALARM PANELS



by Honeywell

The ethos of Morley-IAS is to supply products approved to meet local legislation. In the UK, all of Morley IAS's fire detection and alarm control panels are designed to meet EN54 Part 2 & 4 standards and are approved by the LPCB to ensure compliance. The carefully planned evolution of their products over many years ensures that they can provide a panel to maintain or extend existing Morley-IAS fire systems, and a system purchased today meets not only your existing needs but can easily grow to satisfy the requirements of tomorrow.

DX CONNEXION RANGE

The DX Connexion panel is ideally suited for use in the protection of small to medium sized buildings. All in all, a compact, high performance, feature rich, economical fire alarm control panel designed to help both the installer and the end user. The DX Connexion is an enhancement of the Morley-IAS Dimension panel range, connecting the traditional Morley-IAS qualities of reliability, flexibility and value with advanced features and intuitive functionality.

Part No.	Description
714-001-111	DXc1 Single Loop Panel (No Zonal LED's)
714-001-221	DXc2 2 Loop Control Panel (No Zonal LED's)
714-001-241	DXc4 Loop Control Panel (No Zonal LED's)



DX CONNEXION PERIPHERALS

Part No.	Description
795-102	40 Zone LED Card
795-124	80 Zone LED Card
795-099	Kit DXc Network Card



ZXSE RANGE

The ZXSe range of analogue addressable fire alarm control panels have been designed around proven and reliable microprocessor technology. This simple approach has produced a modular, scalable fire alarm platform suitable for protecting all types of premises.

Part No.	Description
722-001-301	ZX1Se Single Loop Control Panel (Loop Cards Sold Separately)
720-001-301	ZX2Se 1-2 Loop Control Panel (Loop Cards Sold Separately)
721-001-301	ZX5Se 1-5 Loop Control Panel (Loop Cards Sold Separately)
721-001-140	ZX5Se 1-5 Loop Control Panel C/W 140 Zone LED Board (Loop Cards Sold Separately)



ZX REPEATERS

Part No.	Description
709-601-001	Morley Active Repeater
709-701-001	Morley Passive Repeater



ZX PERIPHERALS

Part No.	Description
795-066-100	Loop Driver Card For Apollo Discovery Or XP95 Protocols
795-058-105	Loop Driver Card For Hochiki ESP Protocol
795-068-100	Loop Driver Card For System Sensor Protocol
795-004-001	RS 485 Communication Module
795-077-020	20 Zone LED Card (Increases Zonal LED's To 20)
795-077-060	60 Zone LED Card (Increases Zonal LED's To 80)
795-051-001	Internal Printer For ZX5Se Panel
020-891	Morley-IAS USB Upload/Download Lead
795-082	Engineers Software Programming Kit
796-177	Zx1 & Zx2 Power Supply
796-178	Zx5 Power Supply



ADDRESSABLE FIRE ALARM PANELS



Here at Ampac, we're on a mission to provide the most effective fire detection and evacuation solutions in the industry. We want our customers to feel confident knowing they are partnered with an industry expert providing them with a system that will save lives and minimise the damage caused by a fire.

LOOPSENSE™ ANALOGUE FIRE ALARM PANELS

Part No.	Description
8281-0105	LoopSense 1 Loop, 500mA Capacity, 32 Zone, 4 Alarm Circuits, 3 Amp PSU, Metal
8281-0106	LoopSense 1 Loop, 500mA Capacity, 32 Zone, 4 Alarm Circuits, 3 Amp PSU, Printer, Metal



LOOPSENSE™ PANEL ADD-ONS

Part No.	Description
4310-0050	LoopSense Relay Board - 8 Way Volt Free CO Contacts 3 Amp 24Vdc
4310-0060	LoopSense Sounder Board - 8 Way Monitored Alarm Circuits 500mA 24Vdc
4310-0082	LoopSense 8 Way Conventional Zone Card
4310-0083	LoopSense Conventional Network Card - Interfacing Alarm, Reset, Silence & Zone Out
8210-0001	LoopSense Loop Enable/Activation Key
1152	LoopSense Configuration Kit - CD Manuals & USB Lead
26-2850	LoopSense USB Lead 2 Metres



LOOPSENSE™ REMOTE ADD-ONS

Part No.	Description
4310-0055	LoopSense/FireFinder PLUS Relay Board - 8 Way Volt Free CO Contacts 3 Amp 24Vdc -DIN Rail Mount
273-0051	Enclosure With DIN Rail & Lid For Mounting 4310-0055



LOOPSENSE™ SMART TERMINAL REPEATERS

Part No.	Description
4380-0011	LoopSense SmartTerminal Repeater Without PSU
4380-0012	LoopSense SmartTerminal Repeater With 2 Amp PSU



FIREFINDER PLUS™ ANALOGUE FIRE ALARM PANELS

Part No.	Description
8681-0108	FireFinder Plus SP1M 1 Loop Panel 32 Zone, 5.6Amp PSU, 4 Alarm Circuits 1Amp 24Vdc
8681-0208	FireFinder Plus SP1M 2 Loop Panel 32 Zone, 5.6Amp PSU, 4 Alarm Circuits 1Amp 24Vdc
8681-0308	FireFinder Plus SP1M 3 Loop Panel 32 Zone, 5.6Amp PSU, 4 Alarm Circuits 1Amp 24Vdc
8681-0408	FireFinder Plus SP1M 4 Loop Panel 32 Zone, 5.6Amp PSU, 4 Alarm Circuits 1Amp 24Vdc
8681-0508	FireFinder Plus SP1M 5 Loop Panel 32 Zone, 5.6Amp PSU, 4 Alarm Circuits 1Amp 24Vdc
8681-0608	FireFinder Plus SP1M 6 Loop Panel 32 Zone, 5.6Amp PSU, 4 Alarm Circuits 1Amp 24Vdc
8681-0708	FireFinder Plus SP1M 7 Loop Panel 32 Zone, 5.6Amp PSU, 4 Alarm Circuits 1Amp 24Vdc
8681-0808	FireFinder Plus SP1M 8 Loop Panel 32 Zone, 5.6Amp PSU, 4 Alarm Circuits 1Amp 24Vdc



CONVENTIONAL FIRE ALARM PANELS



Haes' Esento conventional control panels are LPCB certified to EN54-2/4 and include panels from 2 to 32 zones. The range provides many in-built features such as networking, false alarm management & Twin Wire selection. Fully functional repeater panels are available for most models plus an array of peripherals & accessories.

ESENTO[®]

ECLIPSE CONTROL PANELS

Part No.	Description
ECL-2	2 zone Conventional/Twin Wire Control Panel (not suitable for repeaters)
ECL-4	4 zone Conventional/Twin Wire Control Panel (not suitable for repeaters)
FMK-ECL	Recessing bezel



EXCEL CONTROL PANELS

Part No.	Description
XLEN-2	2 Zone Conventional/Twin Wire Control Panel
XLEN-4	4 Zone Conventional/Twin Wire Control Panel
XLEN-6	6 Zone Conventional/Twin Wire Control Panel
XLEN-8	8 Zone Conventional/Twin Wire Control Panel
XLEN-12	12 Zone Conventional/Twin Wire Control Panel



EXCEL ACCESSORIES

Part No.	Description
TPCA04-H	4 way extension zone card with additional outputs & sndr ccts
FMK-XLEN	Recessing bezel for Excel-EN control panels
TPCA05	Comms card for repeater & network connections
OPCARD-8	8 way output card



ESENTO REPEATER PANELS (ONLY FOR USE WITH EXCEL OR EVOQUE PANELS)

Part No.	Description
XLEN-R-12	12 zone repeater panel
FMK-ECL	Recessing bezel for 12 zone repeater panel
XL-RDU	LCD remote display unit
FMK-ES-03	Recessing bezel for XL-RDU



ESENTO SPARES

Part No.	Description
KEY801	Spare key for door lock (set of 2)
KEY134	Spare key for 'Activate Controls' key switch (set of 2)



EVOQUE CONTROL PANELS

Part No.	Description
XL32-16	16 zone Conventional Control Panel
XL32-24	24 zone Conventional Control Panel
XL32-32	32 zone Conventional Control Panel
FMK-XL32	Recessing bezel for Excel-32 control panels
TPCA05	Comms card for repeater & network connections
OPCARD-8	8 way output card



AlarmSense[®] PANELS ALSO AVAILABLE

ADDRESSABLE FIRE ALARM SYSTEMS



Fireclass is designed to appeal to both the end user and installer. It is the latest fire detection technology packaged as an easy to install, out of the box, digital open protocol solution. Designed and engineered in Europe, Fireclass technology is part of Tyco International, the world leader in fire and security solutions.

FIRECLASS PANELS

Part No.	Description
557.200.650	FC602S 1-2 Loop FireClass Panel Shallow
557.200.651	FC604S 2-4 Loop FireClass Panel Shallow
557.200.654	FC32AR 32 zone AC Repeater
557.200.655	FC32DR 32 zone DC Repeater



FIRECLASS DETECTORS

Part No.	Description
516.460.501	FC460PH Photo Heat Detector
516.460.502	FC460P Photo Detector
516.460.503	FC460H Heat Detector
516.460.504	FC460PC Triple Sensor
516.800.701	FC400CH Heat CO Detector



FIRECLASS MOUNTING BASES

Part No.	Description
517.050.041	4B Detector Base
517.050.043	4B-I Isolator Base



FIRECLASS CALL POINTS

Part No.	Description
514.800.805	FC420CP-I Indoor Call Point With Isolator - No Back Box
514.800.806	FC421CP-I Outdoor Call Point With Isolator - With Back Box



FIRECLASS BASE SOUNDERS & VAD'S

Part No.	Description
576.440.001	FC440DSB Detector Base Sounder
576.440.002	FC440SB Addressable Base Sounder
576.440.006	FC440AVB Addressable Sounder Base VAD
576.440.010	FC440AIB Addressable Base Sounder VID



FIRECLASS WALL SOUNDERS & VAD'S

Part No.	Description
576.440.004	FC440SR Addressable Wall Sounder Red
576.440.007	FC440AVW Addressable Wall Sounder VAD - White
576.440.008	FC440AVR Addressable Wall Sounder VAD - Red
576.440.009	FC445AVR Addressable Wall Sounder VAD IP



FIRECLASS INTERFACES

Part No.	Description
555.800.763	FC410SIO Single I/O Module
555.800.765	FC410MIO Multi I/O Module
568.800.703	FC410RIM Relay I/F Module
555.800.702	FC410CIM Contact I/P Module
517.035.007	FC470CV Ancillary Cover For Use With Modules
517.035.010	FC470DGB White Double Gang Back Box



ADDRESSABLE FIRE ALARM SYSTEMS



Ongoing development and investment ensures that Ziton fire alarm systems remain highly competitive internationally both in terms of features and value for money. Quality is assured through designing to EN54 fire alarm standards, having products certified by internationally recognised laboratories such as LPCB and VDS and by applying ISO9000 certified processes to quality controls.

ZITON PANELS & PERIPHERALS

Part No.	Description
ZP2-F1-S-99	ZP2 - 1 Loop Addressable Panel, No zone LED's - Space For 2 x 12V 7.2Ah Batteries
ZP2-F2-S-99	ZP2 - 2 Loop Addressable Panel, No Zone LED's - Space For 2 x 12V 7.2Ah Batteries
ZP2-FR-C-99	ZP2 Repeater Panel - Compact
ZP2-ZI-24-S	ZP2 Zonal LED Expansion Board - 24 Zones For Use With Small Cabinet ZP2 Panels
2010-2-NB	ZP2 Network Card - Required When Networking ZP2 Control Panels



ZITON DETECTORS

Part No.	Description
ZP730-2P	Optical Smoke Detector For ZP2 & ZP3 Control Panels
ZP720-3P	Heat Detector For ZP2 & ZP3 Control Panels - 58°C Fixed Temperature, 58°C Rate Compensated, 75°C Rate Of Rise, 75°C Fixed Temperature
ZP732-2P	Optical Smoke & Heat Detector Compatible With ZP2 & ZP3 Control Panels, Smoke Sensing Element Can Be Isolated
ZX832-3P	Multisensor Detector Compatible With ZP2 & ZP3 Addressable Control Panels



ZITON MOUNTING BASES

Part No.	Description
ZP7-SB1-P	Detector Mounting Base



ZITON CALL POINTS

Part No.	Description
172101	Addressable Manual Call Point - Flush Mount Complete With Glass Element - Red
ZP787-3	Addressable Manual Call Point - Weatherproof Surface Mount IP67 With Glass Element - Red



ZITON BASE SOUNDERS & VAD'S

Part No.	Description
ZP755B-2P	Addressable Detector Base Inc Sounder (Requires ZP7-SB1-P)
ZP755BV-4P	Addressable Detector Base Inc Sounder Beacon (Requires ZP7-SB1-P)



ZITON WALL SOUNDERS & VAD'S

Part No.	Description
177601	Addressable Omni-Directional Horn Sounder - Indoor Use Only - Red
ZPW766R	Addressable Wall Mount Sounder/VAD W-2.4-7.5 - Red Flash/Clear Lens - Indoor Use Only - Red



ZITON INTERFACES

Part No.	Description
99202	A45E-2 Single Monitored Input Module
99102	A50E-2 Output Unit
201301	A51E-1 Dual Mains Relay Output
SMB-DIN1	Interface Enclosure



ADDRESSABLE FIRE ALARM SYSTEMS



The SenTRI System is the most comprehensive life safety system available in the market today. The combination of the powerful software in the control panel and the intelligent loop powered devices deliver a flexible, easy to use system for all building types and sizes.

SENTRI PANELS & PERIPHERALS

Part No.	Description
SENTRI1	SenTRI 1 EN54 Single Loop Control Panel, Non Networkable - Require 7Ah Batteries
SENTRI2	SenTRI EN54 1-2 Loop Control Panel c/w 1 Loop Card Only, 32 Zonal LED's - Require 12Ah Batteries
SENTRI2-LPC-EN	Loop Card For SenTRI2
SENTRI2-NC	SenTRI2 Network Card For Up To 32 Control Panels
SENTRI4	SenTRI EN54 1-4 Loop Control Panel c/w 1 Loop Card Only, 32 Zonal LED's, Printer and 2 x 12V 21Ah Batteries
SENTRI4-LPC-EN	Loop Card For SenTRI4
SENTRI4-NC	Network Card For SenTRI4
SENTRI-RPT	SenTRI Fully Functional Loop Controlled Repeater Panel (Max 4 Per Loop) c/w Batteries



SENTRI DETECTORS

Part No.	Description
SEN-715	SenTRI Optical Sensor
SEN-710	SenTRI Optical Heat Sensor
SEN-720	SenTRI Heat Sensor
SEN-780-S	SenTRI Heat Sensor Sounder
SEN-770-S	SenTRI Optical Heat Sensor Sounder
SEN-780-VAD-HPR	SenTRI Heat Sensor Sounder High Power Red VAD
SEN-780-VAD-HPW	SenTRI Heat Sensor Sounder High Power White VAD
SEN-770-VAD-HPR	SenTRI Heat Sensor Sounder High Power White VAD
SEN-770-VAD-HPW	SenTRI Heat Sensor Sounder High Power White VAD
SEN-770-VAD-LPW	SenTRI Optical Heat Sensor Sounder Standard Performance White VAD
SEN-770-VAD-LPR	SenTRI Optical Heat Sensor Sounder Standard Performance Red VAD



SENTRI MOUNTING BASES

Part No.	Description
S4-700	SenTRI Sensor Base (With Remote LED Output)



SENTRI CALL POINTS

Part No.	Description
SEN-805	SenTRI Manual Call Point c/w Resettable Element & Protective Cover - No Back Box
SEN-895	Surface Back Box For SenTRI MCP (Pack Of 10)
SEN-805-EP	SenTRI Manual Call Point With Resettable Element - IP67
S4-34892	Protective Cover For SenTRI MCP (Pack Of 20)



SENTRI WALL SOUNDERS & VAD'S

Part No.	Description
S3-BASE-SR	SenTRI Shallow Base - Red (Pack Of 5)
SEN-S-R	SenTRI Sounder - Red
SEN-VAD-HPW-R	SenTRI High Power White VAD - Red Body
SEN-VAD-HPR-R	SenTRI High Power Red VAD - Red Body
SEN-S-VAD-HPW-R	SenTRI Sounder High Power White VAD - Red Body
SEN-S-VAD-HPR-R	SenTRI Sounder High Power Red VAD - Red Body
SEN-S-VAD-LPW-R	SenTRI Sounder Standard Power White VAD - Red Body
SEN-S-VAD-LPR-R	SenTRI Sounder Standard Power Red VAD - Red Body
SEN-S-EP-R	SenTRI EP Sounder - IP66 - Red Body
SEN-S-VAD-HPW-EP-R	SenTRI EP Sounder Power White VAD - IP66 - Red Body
SEN-S-VAD-HPR-EP-R	SenTRI EP Sounder High Power Red VAD - IP66 - Red Body



ADDRESSABLE FIRE ALARM SYSTEMS



SENTRI WALL SOUNDERS & VAD'S IP66

Part No.	Description
SEN-S-EP-R	SenTRI EP Sounder IP66 - Red Body
SEN-S-VAD-HPR-EP-R	SenTRI EP Sounder High Power Red VAD IP66 - Red Body



SENTRI INTERFACES

Part No.	Description
SEN-INT-IOAC	SenTRI Mains Switching Interface - Single Channel With Housing
SEN-INT-4IOAC	SenTRI Mains Switching Interface - Four Channel With Housing
SEN-INT-AC	SenTRI Mains Output Interface - Single Output With Housing
SEN-INT-ACDIN	SenTRI Mains Output Interface - Single Output With DIN Rail Mounting Kit
SEN-INT-INPUT	SenTRI Low Voltage Input - Single Input PCB Only
SEN-INT-OUTPUT	SenTRI Low Voltage Output - Single Output PCB Only
SEN-INT-4IO	SenTRI Output Interface - Four Inputs Or Outputs PCB Only
SEN-INT-KEY	SenTRI Key Switch Interface - Low Voltage/Single With Housing



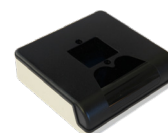
MAINS POWERED INTERFACE

Part No.	Description
78302-02NM	Mains Powered Interface 1.5A/2.0Ah Standby (inc Batteries - 2x12V 2.1Ah)



SENTRI INTERFACE HOUSINGS

Part No.	Description
SEN-490	SenTRI Interface Housing For One SenTRI Interface
SEN-492	SenTRI Interface Metal Housing For One SenTRI Interface
SEN-491	SenTRI DIN Rail Mounting Kit - Pack Of 5
M200E-SMB	Interface Enclosure (Small) Plastic, Previously Listed As S4-34493



WE CAN ALSO SUPPLY

G E N T

by Honeywell



NOTIFIER®

by Honeywell

ADDRESSABLE FIRE ALARM SYSTEMS



DUONET PANELS

Part No.	Description
510-0001	Duonet Panel c/w One Loop Card - Requires 7Ah Batteries
510-0008	Duonet Panel 1st Fix Kit
510-0018	Duonet Panel 2nd Fix Kit
510-0002	Duonet Repeater Panel c/w One Loop Card - Requires 7Ah Batteries
507-0011	Duonet Repeater Panel 1st Fix Kit
510-0018	Duonet Repeater Panel 2nd Fix Kit



QUADNET PANELS

Part No.	Description
507-0001	Quadnet Panel c/w One Loop Card - Requires 17Ah Batteries
507-0020	Quadnet Panel 1st Fix Kit
507-0005	Quadnet Panel 2nd Fix Kit
507-0002	Quadnet Panel c/w One Loop Card - Requires 17Ah Batteries
507-0011	Quadnet Panel 1st Fix Kit
507-0005	Quadnet Panel 2nd Fix Kit



DUONET & QUADNET PANEL ACCESSORIES

Part No.	Description
507-0030	Duonet & Quadnet Loop Card
507-0015	Duonet & Quadnet Network Card
507-0040	Duonet & Quadnet Software And Lead Pack



SITA ADRESSABLE ASD DETECTORS

Part No.	Description
205-0003	Sita ASD Detector
205-0001	Sita ASD Detector With Sounder
205-0012	Sita ASD Detector With Sounder/Strobe
905-0001	Sita ASD Detector Base - Pack Of 5



SITA ADDRESSABLE CALL POINTS

Part No.	Description
403-0006	Sita Manual Call Point
403-0007	Sita Manual Call Point - Weatherproof
25-0083-303	Manual Call Point Cover



SITA ADDRESSABLE SOUNDERS/STROBES

Part No.	Description
326-0001	Sita Sound, Low Profile - Red
326-0003	Sita Sound, Deep Base - Red
326-0015-R	Sita Strobe, Weatherproof - Red
326-0021-R	Sita Sounder Strobe, Low Profile - Red
326-0023-R	Sita Sounder Strobe, Deep Base - Red



SITA MODULES

Part No.	Description
803-0006	Sita Loop I/O - Mains
803-0010	Sita Conventional Zone Module
803-0022	Sita Loop Output - Low Voltage



CONVENTIONAL FIRE ALARM SYSTEMS



Fike's TWINFLEXpro² 2 wire fire alarm system has long been known for its adaptability and cost effectiveness within a variety of applications, big or small, making it one of the most flexible products on the market.

TWINFLEX ASD DETECTOR KITS

Part No.	Description
604-0002	Twinflex 2 Zone Panel, 7x ASD With Sounder, 2x Manual Call Point & Head Removal Tool
604-0004	Twinflex 4 Zone Panel, 7x ASD With Sounder, 2x Manual Call Point & Head Removal Tool
604-0008	Twinflex 8 Zone Panel, 7x ASD With Sounder, 2x Manual Call Point & Head Removal Tool



TWINFLEX PANELS

Part No.	Description
505-0002	Twinflex Pro 2 Zone Panel - Requires 3.2Ah Batteries
505-0004	Twinflex Pro 4 Zone Panel - Requires 3.2Ah Batteries
505-0008	Twinflex Pro 8 Zone Panel - Requires 3.2Ah Batteries
505-0010	Twinflex Pro Repeater Panel (Works With 4 & 8 Zone Panels Using V2 Software)
505-0006	Twinflex Pro 4 Zone Expansion Card (Only Be Used With The 505-0004)
505-0040	Twinflex Pro Programming Software



TWINFLEX MULTIPOINT ASD DETECTORS

Part No.	Description
204-0003	Twinflex Multipoint ASD Detector
204-0001	Twinflex Multipoint ASD Detector With Sounder
204-0012	Twinflex Multipoint ASD Detector With Sounder/Strobe



TWINFLEX MANUAL CALL POINTS

Part No.	Description
402-0006	Twinflex Manual Call Point
402-0007	Twinflex Manual Call Point IP65 - Weatherproof
25-0083-303	Manual Call Point Cover



TWINFLEX SOUNDERS

Part No.	Description
302-0001	Twinflex Hatari Sounder - Red
302-0002	Twinflex Hatari Sounder - White
313-0021	Twinflex Sound Point - Red
313-0022	Twinflex Sound Point - White
302-0004	Twinflex Hi Point Sounder IP65 - Red



TWINFLEX SOUNDERS/STROBES

Part No.	Description
302-0012	Twinflex Flash Point, Low Profile
302-0022	Twinflex Flash Point Domed
302-0023	Twinflex Flash Point IP52 - Weatherproof



TWINFLEX INPUT/OUTPUT MODULE

Part No.	Description
802-0006	Twinflex Input/Output Module



BIWIRE FIRE ALARM SYSTEM



Powering Business Worldwide

Eaton's BiWire Ultra is a two-state fire system, designed to detect and notify building occupants in the event of a life safety situation. It's as simple to operate and install as a standard conventional system, but BiWire Ultra allows detectors, sounders and beacons to all share the same zone wiring, delivering significant savings in both cable and installation costs.

BIWIRE FLEXI CONTROL FIRE PANELS

Part No.	Description
EFBW2ZFLEXI	Eaton BiWire and Conventional Flexi 2 Zone Panel
EFBW4ZFLEXI	Eaton BiWire and Conventional Flexi 4 Zone Panel
EFBW8ZFLEXI	Eaton BiWire and Conventional Flexi 8 Zone Panel
MB512	12V 5Ah Battery - 2 Required Per Panel



BIWIRE DETECTORS

Part No.	Description
4EFBW5IN1DET	Detector, 5 In 1
FXN520	BiWire Common Detector Base
EF5021BWS	BiWire, Base Sounder, First Fix
EF5021BWSB	BiWire, Base Sounder, VAD Beacon, First Fix



BIWIRE CALL POINTS AND ACCESSORIES

Part No.	Description
EF201BWCP	BiWire Call Point
EF203BWCPWP	BiWire Call Point, Weatherproof
CXPC	Protective Hinged Cover
MFBGKEY3	Call Point Keys - (Pack Of 10)
MBG118	Spare Break Glasses - (Pack Of 5)
MBGREKIT	Resettable Element Kit - (Pack Of 10)



BIWIRE RELAY

Part No.	Description
BWEXTR24V	BiWire External Relay 24V
BWEXTR230V	BiWire External Relay 230V



END OF LINE MODULES

Part No.	Description
EOLM-1	End Of Line Module 1 Conventional Detection Circuit - (Single)
EOLM-BW-3	End Of Line Module 3 BiWire Circuits - (Box Of 8)



CONVENTIONAL FIRE ALARM SYSTEMS



Powering Business Worldwide

The Eaton FX2200CPD range of conventional control panels provide a solution to any conventional system requirement. The advanced features include a simple "one-shot" user test facility, class change contacts.

FX2200 SERIES CONVENTIONAL FIRE PANELS

Part No.	Description
EFBWCV-REPEATER	BiWire and Conventional Repeater Panel



CONVENTIONAL DETECTORS

Part No.	Description
FXN520	Conventional Detector Mounting Base
FXN525	Conventional Rate Of Rise Heat Detector
FXN526	Conventional Fixed Heat Detector (92°C)
FXN524	Conventional Fixed Heat Detector (77°C)
FXN922	Conventional Multi-Mode Detector
FXN533	Conventional Optical Smoke Detector
FXN632	Conventional Photo-Thermal Detector
MDP201	Duct Probe (Requires Detector & Base)



CONVENTIONAL UNIVERSAL CALL POINTS

Part No.	Description
CXL/G/P/R/BB/470+680	Universal Call Point
CXL/G/P/R/BB/470+680WP	WP Universal Call Point
CXPC	Protective Hinged Cover
516200FULL-5017E	Call Point Keys (Pack Of 10)
MBG118	Spare Break Glasses (Pack Of 5)
MBGREKIT	Resettable Element Kit (Pack Of 10)



CONVENTIONAL AUDIO VISUAL

Part No.	Description
540505FULL-0390X	Roshni Red Deep Profile Sounder
540503FULL-0403X	Roshni Red Low Profile Sounder
640031FULL-0111X	Flashni Red Deep Profile Sounder With Xenon Beacon
531025FULL-0087	Solex Red Deep Xenon Beacon
593005FULL-0212	Shallow Base Red
593001FULL-0168	Deep Base Red
550072FULL-0216X	Askari Compact White
580002FULL-0001X	Sounder Base White
590001FULL-0069	White Cover For 580002FULL-0001X
666156FULL-1101X	Sounder VID Base, Red Flash



CONVENTIONAL AUDIO ALARM DEVICES / BELLS

Part No.	Description
666140FULL-1079X	Sounder VAD Base, White Flash
590037FULL-0305	White Cover for SQG Products
8500038FULL-0038X	VAD Base For Roshni, White FLash
521601FULL-1601	24V Red Motorised Bell
FB/024/R	24V Electronic Bell



CONVENTIONAL FIRE ALARM AUDIO VISUAL



Vimpex are acknowledged experts in voice sounder and audible/visual evacuation technology. From it's highly efficient distribution warehouse, Vimpex can supply this complete range of voice sounders, audible and visual alarms and accessories.

Loyalty to third party approval and testing has meant massive investment both by Vimpex and it's suppliers to gain LPCB approval on a mix of products including Banshee Excel Sounders, Bells and Reset Call Point.

PLATFORM SOUNDER

Part No.	Description
IDBTS-W	Vimpex Base Sounder Complete With Cover - White



BANSHEE SOUNDERS

Part No.	Description
902CHA6A0	Banshee Excel Sounder Shallow Base - Red
903CHA6A0	Banshee Excel Sounder Deep Base - Red IP66



BANSHEE SOUNDER BEACONS (VID)

Part No.	Description
958CHL1000	Banshee Excel Lite Sounder Beacon Shallow Base - Red
958CHL1001	Banshee Excel Lite Sounder Beacon Deep Base - Red IP66



BELLS

Part No.	Description
CBE6-RS-024-EN	ClamBell 24 V 6" Fire Alarm Bell - Shallow Base - Red EN54-3
CBE6-RW-024-EN	ClamBell 24 V 6" Fire Alarm Bell - Weatherproof - Red EN54-3
CBE6-RS-012-EN	ClamBell 12 V 6" Fire Alarm Bell - Shallow Base - Red
CBE6-RW-012-EN	ClamBell 12 V 6" Fire Alarm Bell - Weatherproof - Red
CBE6-RD-230-EN	ClamBell 230 V 6" Fire Alarm Bell - Deep Base - Red EN54-3
CBE6-RW-230-EN	ClamBell 230 V 6" Fire Alarm Bell - Weatherproof - Red EN54-3
SBE6-RS-024-EN-RW	Clambell - Combined Fire Bell & Visual Alarm Device



PROTECTIVE CAGES

Part No.	Description
SC-001	Smart+Cage 205x145x65mm
SC-002	Smart+Cage 205x145x95mm
SC-004	Smart+Cage 155x100x80mm
SC-005	Smart+Cage 155x100x110mm
SC-006	Smart+Cage 162x80x100mm



MANUAL CALL POINT PROTECTIVE COVERS

Part No.	Description
SG-S-R	Smartguard, Surface Mounted Without Sounder
SG-SS-R	Smartguard, Surface Mounted Comes With Sounder
SG-SMS-50	Smartguard, 50mm Stand Off
SG-F-R	Smartguard, Flush Mounted Without Sounder
SG-FS-R	Smartguard, Flush Mounted Comes With Sounder
SGE-FS-R	Smartguard, Weatherproof Surface Mounted Without Sounder
SGE-SS-R	Smartguard, Weatherproof Surface Mounted Comes With Sounder



FIRE CRYER SOLO

Part No.	Description
FCS/A/R/0/S	Fire-Cryer Solo - Wall Mounted, No Indicator, Shallow Base, Single Fixed Message - Red
FCS/A/R/0/D	Fire-Cryer Solo - Wall Mounted, No Indicator, Deep Base, Single Fixed Message - Red
FCS/A/R/R/S	Fire-Cryer Solo - Wall Mounted, Red Indicator, Shallow Base, Single Fixed Message - Red
FCS/A/R/R/D	Fire-Cryer Solo - Wall Mounted, Red Indicator, Deep Base, Single Fixed Message - Red
FCS/C/W	Fire-Cryer Solo - Base Mounted, Single Fixed Message - White



FIRE CRYER PLUS

Part No.	Description
FC3/A/R/0/(S/D)	Fire-Cryer Plus, Shallow Or Deep Base
FC3/A/R/R/(S/D)	Fire-Cryer Plus With Red Beacon, Shallow Or Deep Base - Red
FC3/C/(W/I)	Mini Fire-Cryer Plus - White Or Ivory
FC3/F/R/0/0	Midi Fire-Cryer Plus - High Output - Red
FC3/D	Maxi Fire-Cryer Plus - Extra High Output - Red
FC3/CM	Custom Message For Fire-Cryer Plus
VMC/02/02/02/M2	Voice Message Controller With 2.5Amp PSU
VMC/01/02/02/M2	Voice Message Controller With Keypad & 2.5Amp PSU



KAC MANUAL CALL POINTS



Part No.	Description
M1A-R470SF-STCK-01	KAC Red Manual Call Point With Flexible Element
W1A-R470SG-STCK-01	KAC Red Weatherproof IP67 Manual Call Point
M1B-R470SF-K013-01	KAC Red Twin Wire Manual Call Point With Flexible Element
M3A-Y000SG-STCK-11	KAC Yellow Manual Call Point NO/NC
M3A-A000SG-K013-11	KAC Orange Manual Call Point
M8A-G000SF-STCK-12	KAC Green Resettable Manual Call Point Double Pole "EMERGENCY DOOR RELEASE"
M3A-B000SF-K013-11	KAC Blue Manual Call Point Single Pole NO/NC



MANUAL CALL POINT ACCESSORIES

Part No.	Description
SRMOUNTINGBOX	KAC Red Back Box
PS200	KAC Slide MCP Hinged Cover
PS210	KAC Replacement Flexible Element
S16200FULL-5017E	KAC Replacement Glass Element
K-TK	Call Point Keys - Pack Of 10



KAC KEY SWITCHES

Part No.	Description
K20SRS-01	KAC 2 Position Key Switch Un-Trapped Single Pole - Red
K30SRS-01	KAC 3 Position Key Switch Un-Trapped Single Pole - Red, Normal/Off/Extract
K30SYS-01	KAC 3 Position Key Switch Un-Trapped Single Pole - Yellow, Normal/Off/Extract
K30SAS-56	KAC 3 Position Key Switch Un-Trapped Single Pole - Orange, Normal/Off/Extract



KAC ROCKER SWITCHES

Part No.	Description
YY9203-P009-01	KAC 3 Position Rocker Switch Single Pole - Yellow, Open/Auto/Close
AA9203-G015-01	KAC 3 Position Rocker Switch Single Pole - Orange, Open/Auto/Close



ADDRESSABLE FIRE ALARM DEVICES



Apollo has three addressable ranges which have also evolved over time. Each new range incorporates new features and advantages of its predecessor and more value to the end user. However, all Apollo products are fully backwards compatible.

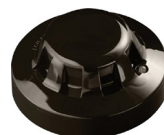
LOOP TESTER

Part No.	Description
SA7800-870APO	Loop Tester



XP95 DETECTORS

Part No.	Description
55000-600APO	XP95 Optical Smoke Detector
55000-400APO	XP95 Heat Detector - Standard
55000-401APO	XP95 Heat Detector - High Temperature
55000-885APO	XP95 Multi-Sensor Detector (Optical/Heat)
55000-660APO	XP95 Black Optical Smoke Detector



MOUNTING BASES

Part No.	Description
45681-210APO	XP95 Mounting Base
45681-284APO	XP95 Isolating Base
45681-242APO	XP95 Low Power Relay Base
45682-127APO	Pre-Addressed XPERT Cards, Full Set (1-126)
38531-771APO	Blank XPERT Card
55000-720APO	XP95 Isolator
45681-361APO	XP95 Black Mounting Base



CALL POINTS & ACCESSORIES

Part No.	Description
SA5900-908APO	Intelligent Manual Call Point
58200-951APO	Waterproof Manual Call Point With Isolator
44251-189APO	Transparent Cover For Apollo MCP
44251-176APO	Reset Keys For Apollo MCP - Pack Of 10



SOUNDER - VID RANGE

Part No.	Description
45681-276APO	Ancillary Sounder Base
45681-277APO	Integrated Base Sounder With Isolator
45681-330APO	Sounder Beacon Base With Isolator
45681-333APO	Beacon Base With Isolator
55000-877APO	Loop-Powered Beacon - Red
55000-001APO	Intelligent Open Area Sounder - Red (SONOS)
55000-005APO	Intelligent Open Area Sounder Beacon - Red (SONOS)
55000-009APO	Intelligent Open Area Beacon - Red (SONOS)
55000-278APO	Multi-Tone Open Area Sounder - Red
55000-274APO	Multi-Tone Weatherproof Open Area Sounder - Red
55000-293APO	Multi-Tone Open Area Sounder Beacon With Isolator - Red
55000-298APO	Weatherproof Multi-Tone Open Area Sounder Beacon With Isolator - Red
45681-292APO	White Cover Plate
55000-877APO	Loop Powered Beacon



ADDRESSABLE FIRE ALARM DEVICES



VAD RANGE

Part No.	Description
45681-700APO	Discovery Sounder VAD Base With Isolator
45681-705APO	Cat O. XP95 Sounder VAD Base With Isolator - White
45681-709APO	Cat O. XP95 VAD Base With Isolator -White
55000-741APO	Cat W Loop Powered VAD 6m - Red
55000-742APO	Cat C Loop Powered VAD 8.5m - Red
55000-744APO	Cat W Loop Powered VAD 6m - White
55000-745APO	Cat C Loop Powered VAD 8.5m - White



INTERFACES

Part No.	Description
SA4700-100APO	Intelligent Switch Monitor
SA4700-102APO	Intelligent Input/Output
SA4700-103APO	Intelligent Mains Switching Input/Output Unit
SA4700-104APO	Intelligent Dual Input/Output Unit
55000-760APO	Mini Switch Monitor
55000-845APO	XP95 Zone Monitor Unit With Isolator
55000-852APO	XP95 Sounder Control Unit With Isolator
SA6700-100APO	Intelligent Twin Switch Monitor
55000-588	Input/Output 3-Way



DIN RAIL INTERFACES

Part No.	Description
SA4700-300APO	Intelligent Din-Rail Switch Monitor
SA4700-302APO	Intelligent Din-Rail Input/Output Unit



DISCOVERY DETECTORS

Part No.	Description
58000-600APO	Discovery Optical Smoke Detector
58000-400APO	Discovery Heat Detector
58000-700APO	Discovery Multisensor
58000-300APO	Discovery Carbon Monoxide Fire Detector



DISCOVERY SOUNDER - VID RANGE

Part No.	Description
45681-702APO	Discovery Sounder Base With Isolator
45681-393APO	Discovery Sounder Visual Indicator Base With Isolator
58000-005APO	Discovery Open Area Sounder Beacon - Red



LOOP POWERED BEAM DETECTION

Part No.	Description
SA7100-100APO	Intelligent Auto Alligning Beam (8-50M)
29600-526	Extension Kit 100M



ADDRESSABLE FIRE ALARM DEVICES



SOTERIA DETECTORS

Part No.	Description
SA5100-600APO	Soteria Mid Level Optical With Isolator
SA5100-400APO	Soteria Mid Level Heat With Isolator
SA5000-700APO	Soteria Mid Level Multi-Sensor With Isolator
SA5000-600APO	Soteria Mid Level Optical Without Isolator
SA5000-400APO	Soteria Mid Level Heat Without Isolator
SA5000-700APO	Soteria Mid Level Multi Sensor Without Isolator
SA5000-200APO	Soteria XPERT 8 Base



SOTERIA DIMENSION DETECTORS

Part No.	Description
FL5100-600APO	Soteria Dimension Optical
FL6100-600APO	Soteria Dimension Specialist Optical
FL5000-200APO	Soteria Dimension Mounting Box



XPANDER RANGE

Part No.	Description
XPA-IN-14050-APO	Xpander Diversity Loop Interface Unit
XPA-MC-14006-APO	Xpander Manual Call Point
XPA-CB-12034-APO	Xpander Optical Detector & Mounting Base
XPA-CB-11170-APO	Xpander A1R Heat Detector & Mounting Base
XPA-CB-14016-APO	Xpander Combined Optical Detector & Sounder Base
XPA-CB-14017-APO	Xpander A1R Heat Detector & Sounder Base
XPA-CB-14020-APO	Xpander Combined Optical Detector & Sounder Beacon Base
XPA-CB-14021-APO	Xpander Combined A1R Heat Detector & Sounder Beacon Base
XPA-CB-14001-APO	Xpander Sounder - Red
XPA-CB-14003-APO	Xpander Sounder Beacon - Red
XPA-IN-14011-APO	Xpander Single Channel Input/Output
XPA-IN-14012-APO	Xpander Dual Channel Input/Output
XPA-IN-14102-APO	Xpander Remote Indicator
29600-319	Blank XPander XPERT Card - Red
29600-413	Blank XPander XPERT Card - White



REACH WIRELESS

Part No.	Description
RW1000-600APO	Reach Optical Smoke Detector
RW1000-400APO	Reach Heat Detector
RW1000-700APO	Reach Multi-Sensor Detector
RW1900-901APO	Reach Manual Call Point
RW1300-110APO	Reach Sounder Base
RW1300-210APO	Reach Sounder VAD Base (White Flash)
RW1300-211APO	Reach Sounder VAD Base (Red Flash)
RW1500-120APO	Reach Open Area Sounder - Red Body
RW1500-110APO	Reach Open Area Sounder - White Body
RW1500-220APO	Reach Open Area Sounder VAD Cat W - Red Body (White Flash)
RW1500-210APO	Reach Open Area Sounder VAD Cat W - White Body (Red Flash)
RW1700-051APO	Reach Input Module
RW1700-052APO	Reach Output Module
RW1500-800APO	Reach Remote Indicator Module
RW1700-030APO	Reach XP95 Loop Interface Module
RW1800-060APO	Reach Survey Kit Lite



CONVENTIONAL FIRE ALARM DEVICES



SERIES 65

The Series 65 range of conventional detectors incorporates well proven sensing technologies, together with advances in materials and electronics technology. A wide operating voltage of 9 to 33V DC means that series 65 detectors can be integrated into security systems when used with a relay base.

Part No.	Description
55000-317APO	Series 65 Optical Smoke Detector - Standard
55000-217APO	Series 65 Ionisation Smoke Detector - Standard
55000-220APO	Series 65 Integrating Ionisation Smoke Detector
55000-122APO	Series 65 A1R Heat Detector - Standard (57°C)
55000-127APO	Series 65 BR Heat Detector - Standard (75°C)
55000-132APO	Series 65 CR Heat Detector - Standard (90°C)
55000-137APO	Series 65 CS Heat Detector - Standard (90°C)
45681-201APO	Series 65 Diode Base
45681-206APO	Series 65 Sav-Wire Base
SC2900-001	Conventional Call Point



ALARMSENSE

Two-Wire AlarmSense has been developed to make the design and installation of a fire detection and alarm system easier and more economic for small to medium sized buildings. The range also allows an existing system to be extended or modified if necessary. This flexibility makes AlarmSense an excellent choice for use in Houses in Multiple Occupation (HMO's) and other similar applications.

Part No.	Description
55000-390APO	AlarmSense Optical Smoke Detector
55000-190APO	AlarmSense A1R Heat Detector - Standard (57°C)
55000-193APO	AlarmSense CS Heat Detector - High Temp (90°C)
45681-244APO	AlarmSense Base
55000-392APO	AlarmSense Optical Smoke Detector With Sounder Base
55000-196APO	AlarmSense A1R Heat Detector (57°C) With Sounder Base
55000-197APO	AlarmSense CS Heat Detector (90°C) With Sounder Base
55000-394APO	AlarmSense Optical Smoke Detector With Sounder Beacon Base
55000-198APO	AlarmSense A1R Heat Detector (57°C) With Sounder Beacon Base
55000-199APO	AlarmSense CS Heat Detector (90°C) With Sounder Beacon Base
45681-510APO	AlarmSense Sounder Base
45681-509APO	AlarmSense Sounder Beacon Base
45681-294APO	Locking White Cap
55000-018APO	AlarmSense Open Area Sounder - Red
55000-017APO	AlarmSense Open Area Sounder Beacon - Red
55400-894APO	AlarmSense Manual Call Point
55000-835APO	AlarmSense Alarm Relay



APOLLO PROTOCOL C-TEC SOUNDER & VAD'S

Part No.	Description
BF431A/CX/W	96dB Base Sounder - EN54-3/17, White Housing (LPCB)
BF456A/CX/W	C-3-8 Base VAD With 96dB Sounder - EN54-3/17 (LPCB)
BF460A/CX/W	C-3-8 Base VAD - EN54-23/17, White/Clear Housing (LPCB)
BF330CTLIDW	Optional White Cap For Base Sounder VADs (For Standalone Use)
BF330CTLIDR	Optional Red Cap For Base Sounder VADs (For Standalone Use)
BF430A/CX/SR	103dB Wall Sounder - EN54-3/17, Shallow, IP21C - Red (LPCB)
BF430A/CX/DR	103dB Wall Sounder - EN54-3/17, Deep, IP33C - Red (LPCB)
BF433A/CX/SR	W-2.4-8.2 Wall VAD c/w 103dB Sounder - EN54-3/23/17, IP21C, Shallow - Red (LPCB)
BF433A/CX/DR	W-2.4-8.2 Wall VAD c/w 103dB Sounder - EN54-3/23/17, IP33C, Deep - Red (LPCB)
BF433A/CX/DR/65	W-2.4-8.2 Wall VAD c/w 103dB Sounder, IP65C, Deep - Red
BF430A/CX/DR/65	103dB Sounder, IP65C, Deep - Red
BF450A/CX/SW	EN54-3/17 91dB Ceiling Sounder, IP21C, Shallow - White (Intertek Certified)
BF451A/CX/SW	C-3-8 Ceiling VAD - EN54-3/23/17 c/w 91dB Sounder, IP21C, Shallow - White (Intertek Certified)
BF458A/CX/SW	C-3-8 Ceiling VAD - EN54-3/23/17, Shallow, IP21C - White (Intertek Certified)
BF450A/CX/SR	Wall Sounder - EN54-3/17, Shallow - Red (Intertek Certified)
BF451A/CX/SR	W-3-3.1 Wall VAD - EN54-3/23/17 c/w 91dB Sounder, Shallow - Red (Intertek Certified)
BF458A/CX/SR	W-3-3.1 Wall VAD - EN54-23/17, Shallow - Red (Intertek Certified)



INTRINSICALLY SAFE



XP95 INTRINSICALLY SAFE DETECTORS & BASES

Part No.	Description
55000-440APO	XP95 I.S Heat Detector
45681-215APO	XP95 I.S Mounting Base
55000-640APO	XP95 I.S Optical Smoke Detector



XP95 INTRINSICALLY SAFE CALL POINTS & ACCESSORIES

Part No.	Description
55200-940APO	XP95 I.S Manual Call Point - Red
PS200	Call Point Hinged Cover



XP95 INTRINSICALLY SAFE GALVANIC BARRIER

Part No.	Description
29600-098	XP95 Intrinsicly Safe Detector Galvanic Barrier



INTRINSICALLY SAFE AV GALVANIC BARRIER

Part No.	Description
29600-440	Conventional Intrinsicly Safe AV Galvanic Barrier



ORBIS INTRINSICALLY SAFE DETECTORS & BASES

Part No.	Description
ORB-OP-52027-APO	Orbis I.S Optical Smoke Detector
ORB-HT-51145-APO	Orbis I.S A1R Heat Detector
ORB-HT-51149-APO	Orbis I.S BR Heat Detector
ORB-HT-51153-APO	Orbis I.S CR Heat Detector
ORB-OH-53027-APO	Orbis I.S Multisensor Detector
ORB-HT-51157-APO	Orbis I.S A1S Heat Detector
ORB-HT-51151-APO	Orbis I.S BS Heat Detector
ORB-HT-51155-APO	Orbis I.S CS Heat Detector
ORB-HT-51147-APO	Orbis I.S A2S Heat Detector
ORB-MB-50018-APO	Orbis I.S Timesaver Base



ORBIS INTRINSICALLY SAFE CALL POINTS & ACCESSORIES

Part No.	Description
55100-031APO	Conventional I.S Manual Call Point - Red
55100-033APO	Conventional I.S Manual Call Point Waterproof - Red
PS200	Call Point Hinged Cover



INTRINSICALLY SAFE SOUNDERS & SOUNDER BEACONS

Part No.	Description
29600-379	Conventional I.S Sounder
29600-446	Conventional I.S Visual Indicator
55000-852	Sounder Control Unit



ORBIS INTRINSICALLY SAFE GALVANIC BARRIER

Part No.	Description
29600-378	Orbis Intrinsicly Safe Detector Galvanic Barrier



ADDRESSABLE FIRE ALARM DEVICES



System Sensor is the world's largest manufacturer of analogue addressable and conventional fire detection devices for commercial applications. As part of Honeywell – a \$36 billion diversified technology company employing 120,000 people in 95 countries around the world – we enjoy unparalleled support. This has enabled us to consolidate our position as a worldwide leader for technology, manufacturing quality and, more importantly, total cost of ownership of fire detectors. Our state-of-the-art manufacturing facilities in Trieste, Italy are complemented by a global network of fire systems integration and distribution partners, who serve end-users, consulting engineers and specifiers.

FIRE ALARM DETECTORS & BASES

Part No.	Description
22051E-26	Low Profile Optical Smoke Sensor - White
22051EI-26	Low Profile Optical Smoke Sensor With Isolator - White
22051TE-26	MultiSensor Combined Optical Smoke & Thermal Sensor - White
22051TEI-26	MultiSensor Combined Optical Smoke & Thermal Sensor With Isolator
52051E-26	Heat Sensor A1R (58°C) - White
52051EI-26	Heat Sensor A1R Rate Of Rise (58°C) With Isolator - White
52051HTE-26	Heat Sensor BS High Temperature (78°C) - White
B501AP	Addressable Sensor Base For Isolated & Non-Isolated Detectors - White



CALL POINTS & ACCESSORIES

Part No.	Description
M5A-RP02FG-X999-03	Addressable Manual Call Point With Built In Isolator. Glass Element Included (Requires PS031W For Surface Mounting Or A Single Gang Backbox For Flush Mount)
M5A-RP01FF-X999-03	Addressable Manual Call Point. Flexible Element Included (Requires PS031W For Surface Mounting Or A Single Gang Backbox For Flush Mount)
M5A-RP02FF-X999-03	Addressable Manual Call Point With Built In Isolator. Flexible Element Included (Requires PS031W For Surface Mounting Or A Single Gang Backbox For Flush Mount)
516200FULL-5017E	Replacement Glass Element - Pack of 10
PS-210	Call Point Resettable Element - Pack of 10
PS200	Manual Call Point Cover
SRMountingBox	Red Back Box



SOUNDERS & VADS

Part No.	Description
WST-PC-N00	Wall VAD - Addressable Loop Powered EN54-23 VAD (W-1.68-1.68) - Clear Lens, Red Flash (Not Isolated)
WSS-PC-N00	Wall Sounder VAD - Addressable Loop Powered Sounder, EN54-3 & EN54-23 (W-1.9 - 1.9) - Clear Lens, Red Flash (Not Isolated)
WSO-PR-N00	Wall Sounder - Addressable Loop Powered Sounder EN54-3 - Red (Not Isolated)
WSO-PR-I00	Wall Sounder - Addressable Loop Powered Sounder EN54-3 - Red (Built In Loop Isolation)
WSO-PP-N00	Wall Sounder - Addressable Loop Powered Sounder EN54-3 - White (Not Isolated)
WSO-PP-I00	Wall Sounder - Addressable Loop Powered Sounder EN54-3 - White (Built In Loop Isolation)
BSO-PP-N00	Base Sounder - Addressable Loop Powered Base Sounder EN54-3 - White (Not Isolated)
BSO-PP-I00	Base Sounder - Addressable Loop Powered Base Sounder EN54-3 - White (Built In Loop Isolation)
DSS-PC-I00	Base Sounder/VAD - Addressable Loop Powered Base Sounder/VAD (Red Flash) EN54-3 - White (Built In Loop Isolation)



INTERFACES

Part No.	Description
M210E	Single Input Monitor Module - Requires M200E-SMB For Surface Mounting & M200E-DIN For Mounting To Din Rails.
M201E	Output Control Module - Requires M200E-SMB For Surface Mounting Or M200E-DIN For Mounting To DIN Rails
M201EA-240	Output Control Module. 240 Vac Relay Contact Rating, Complete With Surface Enclosure.
M200E-SMB	Surface Mounting Box For M2xx Series Modules



ADDRESSABLE FIRE ALARM DEVICES



Hochiki Europe at present builds in excess of 500,000 fire detection products per year. The Enhanced Systems Protocol (ESP) analogue addressable device range is based on proven RS232 serial communications technology with optimised voltage and current levels for transmitting and receiving data at 24V. A number of control panel manufacturers produce panels suitable for use with Hochiki ESP protocol devices.

ESP DETECTORS

Part No.	Description
ALN-EN	Photo-Electric Smoke Sensor
ATJ-EN	Combined Heat Sensor
ACB-EW	Combined Heat Sensor Waterproof - IP67
ACC-EN	Multi Sensor (Optical/Heat)
ACD-EN	C° Sensor



ESP MOUNTING BASES

Part No.	Description
YBN-R/3	Sensor Base
YBN-R/SCI	Short Circuit Isolator Base



ESP CALL POINTS

Part No.	Description
HCP-E(SCI)	Addressable Call Point - Red With Short Circuit Isolator
HCP-W(SCI)	Addressable Call Point - Red - Weatherproof With Isolator
SRMOUNTINGBOX	HCP Back Box



ESP BASE SOUNDERS & VAD'S

Part No.	Description
YBO-BS	Loop Powered Base Sounder
YBO-BSB2/RL	Loop Powered Base Sounder Beacon - Red LED's
YBO-BSB2/WL	Loop Powered Base Sounder Beacon - White LED's
SI/CAP2(WHT)	White Cover Plate



ESP VID RANGE

Part No.	Description
CHQ-AB	Loop Powered Visual Indicator



ESP CEILING VAD'S

Part No.	Description
CHQ-CB(RED)/RL	Ceiling Beacon, EN54-23 - Red Case, Red LED's
CHQ-CB(RED)/WL	Ceiling Beacon, EN54-23 - Red Case, White LED's



*NOTE - COLOUR OPTIONS AVAILABLE - WHITE/IVORY (BLACK AT ADDITIONAL COSTS)

SAME DAY
DESPATCH



ADDRESSABLE FIRE ALARM DEVICES



ESP WALL SOUNDERS & VAD'S

Part No.	Description
CHQ-WSB2/RL	Wall Sounder Beacon, EN54-23 - Red Case, Red LED's
CHQ-WSB2/WL	Wall Sounder Beacon, EN54-23 - Red Case, White LED's
CHQ-WS2	Loop Powered Wall Mounting Sounder - Red



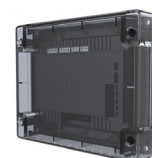
ESP SOUNDER & VAD MOUNTING BASES

Part No.	Description
CHQ-WPK	Wall Sounder Weatherproofing Kit - IP65
YBO-R/3(RED)	Red Mounting Base For CHQ-WS2
YBO-R/SCI(RED)	Red Isolator Base For CHQ-WS2
CHQ-ARI	Loop Powered Remote Indicator



ESP STANDARD INTERFACES

Part No.	Description
CHQ-DSC2(SCI)	Dual Sounder Controller With Isolator
CHQ-SZM2(SCI)	Single Zone Monitor With Isolator
CHQ-DZM(SCI)	Dual Zone Monitor With Isolator
CHQ-DRC2(SCI)	Dual Relay Controller With Isolator
CHQ-DIM2(SCI)	Dual Input Module With Isolator
CHQ-MRC2(SCI)	Mains Relay Controller With Isolator
CHQ-PCM(SCI)	Plant Control Module
CHQ-POM	Powered Output Module
CHQ-SIM	Single Input Module
CHQ-SOM	Single Output Module
CHQ-BACKBOX	Module Back Box



ESP DIN-RAIL INTERFACES

Part No.	Description
CHQ-DSC2-DIN(SCI)	Dual Sounder Controller With Isolator
CHQ-SZM2-DIN(SCI)	Single Zone Monitor With Isolator
CHQ-DRC2-DIN(SCI)	Dual Relay Controller With Isolator
CHQ-DIM2-DIN(SCI)	Dual Input Module With Isolator
CHQ-MRC2-DIN(SCI)	Mains Relay Controller With Isolator
CHQ-PCM-DIN(SCI)	Plant Control Module



ANCILLARY EQUIPMENT

Part No.	Description
TCH-B200	Hand Held Address Programmer For ESP Devices
SDP-3	Duct Probe Housing



CONVENTIONAL FIRE ALARM DEVICES



Hochiki Europe at present builds in excess of 500,000 fire detection products per year. By employing the latest manufacturing techniques and rigorous quality control to ISO 9001 and Environmental Management to ISO14001, Hochiki Europe ensures every product installed will continue to enhance Hochiki's name for long term reliable fire detection.

CDX DETECTORS

Hochiki's CDX range offers one of the most extensive product portfolios available, providing solutions for most conventional fire detection applications as well as security systems, due to its wide operating voltage range (9.5-30V dc)

Part No.	Description
SOC-E3N	Photoelectric Smoke Detector
DCD-AE3	Combined Heat Detector 60°C
DCD-CE3	Combined Heat Detector 90°C
DFJ-AE3	Fixed Temperature Heat Detector 60°C
DFJ-CE3	Fixed Temperature Heat Detector 90°C
DFG-60BLKJ	Waterproof Heat Detector 60°C (No Base Required)



CDX BASES

Part No.	Description
YBN-R/6SK	Shottky Diode Base
YBN-R/6	Standard Mounting Base
YBO-R/6PA	2 Wire Mounting Base
YBO-R/6R	Latching Relay Mounting Base
YBO-R/6RN	Conventional Relay Base Non-Latching
YBO-R/6RS	Latching Relay Base With Schottky Diode



EKHO is a wireless based family of products which can be fully integrated into Hochiki's renowned ESP intelligent hardwired system. At the core of the system is the wireless Translator Module. It is hard-wired to the fire alarm control panel loop and communicates continuously with the wireless devices. Wireless Expander modules are used to extend the radio mesh network, increasing the reach and capacity of the overall system

EKHO DETECTORS AND CALL POINTS

Part No.	Description
EK-WL8-O	EKHO Hybrid Wireless Optical Smoke Sensor
EK-WL8-OS	EKHO Hybrid Wireless Optical Smoke Sounder
EK-WL8-OV	EKHO Hybrid Wireless Optical Smoke Sensor with Built in Voice Alarm and VAD
EK-WL8-H	EKHO Hybrid Wireless Heat Sensor
EK-WL8-HS	EKHO Hybrid Wireless Heat Sounder
EK-WL8-OH	EKHO Hybrid Wireless Multi-Sensor
EK-WL8-CP	EKHO Hybrid Wireless Resettable Manual Call Point



EKHO SOUNDERS AND I/O UNITS

Part No.	Description
EK-WL8-SND	EKHO Hybrid Wireless Sounder
EK-WL8-EXP	EKHO Wireless Expander Module
EK-WL8-IN	EKHO Hybrid Wireless Single Input Module
EK-BOX-02	EKHO Back Box for EK-WL8-IN
EK-WL8-OUT	EKHO Hybrid Wireless Single Output Module
EK-WL8-TRH	EKHO Hybrid Wireless Translator Module
EK-BBOX-01	EKHO Back Box for EK-WL8-TRH/EXP/OUT



ADDRESSABLE FIRE ALARM DEVICES



An advanced, premium fire system featuring analogue addressable fire detectors, with 254 addresses per loop. Evolution combines extremely reliable fire detection with a very high degree of protection against unwanted false alarms. It's advanced, highly flexible protocol, is uniquely resistant to noise and is compliant with EN Standards.

EVOLUTION DETECTORS

Part No.	Description
EV-P	Optical Smoke Sensor
EV-PH	Optical Smoke & Heat Detector 54°C
EV-H-A1R	Heat Detector 54°C
EV-H-CS	Heat Detector 92°C - High Temp
EV-PYS	Optical Detector With In-Built Sounder
EV-DP	Dual Optical Detector
EV-DPH-A2R	Dual Optical & Heat Sensor
EV-DPH-CS	Dual Optical & Heat Sensor



EVOLUTION MOUNTING BASES

Part No.	Description
UB-6-EV	Detector Mounting Base
EV-B-SCI	Detector Base With Short Circuit Isolator



EVOLUTION CALL POINTS

Part No.	Description
EV-MCP2-IP24	Manual Call Point (Indoor)
EV-MCP2-IP67	Manual Call Point Waterproof (Outdoor)
EV-MCP2-SCI-IP24	Manual Call Point With -ve Side Isolator
EV-MCP2-SCI-IP67	Manual Call Point Waterproof With -ve Side Isolator
CI-NTN	Hinged Call Point Cover



EVOLUTION BASE SOUNDERS & VAD'S

Part No.	Description
EV-SDR Base	Base Sounder
EV-AV2 Base	Base Sounder Beacon
EV-PSBCN	Base Beacon (For Use With EV-PYS)



EVOLUTION WALL SOUNDERS & VAD'S

Part No.	Description
EV-HIOP-SDR	High Output Sounder
EV-HIOP-SB-R	High Output Sounder Red LED Beacon
EV-HIOP-SB	High Output Sounder White LED Beacon
EV-HIOP-BCN-R	High Output Beacon - Red LED
EV-HIOP-BCN	High Output Beacon - White LED



EVOLUTION INTERFACES

Part No.	Description
EV-IP	Input Module
EV-OP	Output Module
EV-SIO	Single Input/Output Module
EV-240v MRA	Mains Switching Relay
EV-ZMU	Zone Monitor Module



PROGRAMMER

Part No.	Description
EV-AD2KIT	Programmer & Universal Lead



RADIO FIRE ALARM SYSTEM

Zerio Plus

As the longest standing radio fire alarm company in the world, with over 25 years experience, Electro-Detectors manufacture the most comprehensive range of wireless detection equipment available in the UK today. Over the last few decades, radio fire systems have dramatically increased in reliability whilst reducing in both size and price. Today's systems, from Electro-Detectors, boast a long battery life and are as reliable as hardwired systems.

The EN54 Certified Zerio Plus Radio Fire Alarm System has been designed to be engineer friendly. It is based on the highly regarded Zerio system that has been manufactured for over half a decade. With all of the popular features of its popular predecessor, many new features have been added to enable the system to be even more user friendly with enhanced options to help the engineers install with the minimum of inconvenience.

ZERIO PLUS CONTROL PANELS

Part No.	Description
EDA-Z5008	8 Zone Radio Control Panel
EDA-Z5020	20 Zone Radio Control Panel
EDA-Z5100	100 Zone Radio Control Panel



ZERIO PLUS BOOSTERS

Part No.	Description
EDA-Z6000	Radio Booster Unit (Requires Mains Supply)
EDA-Z6010	Wired Booster Unit



ZERIO PLUS DETECTORS

Part No.	Description
EDA-R5000	Radio Optical Smoke Detector
EDA-R6000	Radio Optical Smoke Detector With Combined Sounder
EDA-R6030	Radio Optical Smoke Detector With Sounder Beacon
EDA-D5000	Radio Heat Detector
EDA-D6000	Radio Heat Detector With Combined Sounder
EDA-D6030	Radio Heat Detector With Sounder Beacon



ZERIO PLUS CALL POINTS

Part No.	Description
EDA-C5000	Radio Call Point/Break Glass Unit
EDA-T5100	Radio Silence Alarm Button



ZERIO PLUS SOUNDERS & BEACON

Part No.	Description
EDA-A6000	Radio Sounder
EDA-A6030	Radio Sounder With LED Beacon
EDA-A6060	Radio LED Beacon



ZERIO PLUS INPUT/OUTPUT UNIT

Part No.	Description
EDA-T6080	Radio Input/Output Unit DC



ZERIO PLUS ANTENNA

Part No.	Description
EDA-Y1000	Panel Stub Antenna
EDA-Y5000	Di-Pole Antenna With Bracket & 3m Cable



ZERIO PLUS BATTERIES

Part No.	Description
EDA-Q670	2 Per Sounder Detector (Pre June 2013)
EDA-Q690	1 Per Call Point & All Detectors, 3 Per Sounder, 2 Per Sounder Detector (From June 2013)



SURVEY KIT

Part No.	Description
EDA-Z5000	Zerio Plus Survey Kit



RADIO FIRE ALARM SYSTEM



The FireCell fire detection platform was developed and engineered in the UK to meet the introduction of EN54-25 pan European standard.

Using the EMS ethos of excellence, FireCell has become the first choice whenever wireless or hybrid technology is deployed. From a few devices, up to multiple control panels wirelessly networked, FireCell is flexible, scalable as well as being easy to install, commission and service.

CONTROL EQUIPMENT

Part No.	Description
FC-LA80161-M2	FireCell 1 Loop Master Surface Control Panel
FC-A80161-M2	FireCell 1 Loop 16 Zone Surface Control Panel
FC-A80162-M2	FireCell 2 Loop Master Surface Control Panel
FCX-532-001	FireCell Fusion Radio Loop Module



HUB

Part No.	Description
FCX-500-004	FireCell Four Loop Radio Hub



RADIO INFRASTRUCTURE

Part No.	Description
FC-555-001-V3	FireCell Wireless 230VAC RCC - V3
FC-555-331-V3	FireCell Wireless 230VAC RCC With Remote Aerial Facility - V3
FC-555-024-V3	FireCell Wireless 24VDC RCC - V3
EK-10-0001	Wireless Zone Monitor Kit



FIRE DETECTORS

Part No.	Description
FCX-177-001	FireCell Optical Smoke Detector
FCX-175-001	FireCell A1R Heat Detector
FCX-176-001	FireCell CS Heat Detector
FCX-170-001	FireCell Wireless Detector Base
FCX-191-000	FireCell Wireless Detector Sounder Base
FCX-191-200	FireCell Wireless Detector Sounder Beacon



SOUNDERS & BEACONS

Part No.	Description
FC-323-WA2	FireCell Wireless Wall Sounder & Beacon
FC-171-002	FireCell Wireless Base For Audio Visual Device



CALL POINTS

Part No.	Description
FC-200-002	FireCell Wireless Red Surface Mount Call Point



MODULES

Part No.	Description
FC-620-001	FireCell Auxiliary Relay Module
FC-610-001	FireCell Wireless Input/Output Module
FC-868-SE2	FireCell Wireless Survey Kit
FCX-532-001	FireCell Fusion Radio Loop Module



AERIALS

Part No.	Description
FC-868-A03	Vertically Mounted Dipole Aerial With 3M Coax
FC-868-D03	Weatherproof Vertically Mounted Dipole Aerial With 3M Coax
7329	UHF Dipole Unity Gain External Aerial With 5M RG58 Cable
7325	Pole Mounting Kit



RADIO FIRE ALARM SYSTEMS



This new range of high-performance open protocol EN54-25 wireless detection, control and alarm devices offer exceptional capabilities, quality and reliability. Combined with user-friendly survey, install, commissioning and maintenance software, the Sygno-fi range revolutionises the wireless fire systems market. The Sygno-fi wireless platform is suitable for both small-medium or large sites, with the capability to handle up to 128 devices per wireless translator and 240 per hybrid loop, along with a 10-year battery life on sensors, call points and inputs and five years on output devices, sounders and VADS.

SYGNO-FI MODULES

Part No.	Description
SYG-W2W	Sygno-fi Translator Module
SYG-EM	Sygno-fi Expander Module (Requires PSU)
SYG-OM	Sygno-fi Wireless Output Module
SYG-IM	Sygno-fi Wireless Input Module
SYG-CEM	Sygno-fi Conventional Expander Module (Requires PSU)



SYGNO-FI FIELD DEVICES

Part No.	Description
SYG-MA	Sygno-fi Wireless Multi-Sensor Detector c/w batteries
SYG-PA	Sygno-fi Wireless Optical Detector c/w batteries
SYG-TA	Sygno-fi Wireless Heat Detector c/w batteries
SYG-BS	Sygno-fi Wireless Sounder Base
SYG-BSB-23W	Sygno-fi Wireless Sounder VAD Base (White Flash)
SYG-SBC	Sygno-fi Wireless Base Sounder Cover (white)
SYG-WSR	Sygno-fi Wireless Wall Sounder Red
SYG-SBR	Sygno-fi Wireless Sounder VAD Red
SYG-SIM	Sygno-fi Wireless Sounder Interface Module
SYG-CP	Sygno-fi Wireless Manual Call Point c/w protective lid



SYGNO-FI REMOTE INDICATOR

Part No.	Description
SYG-RI	Sygno-fi remote indicator



SYGNO-FI SURVEY KIT

Part No.	Description
SYG-STK	Sygno-fi Wireless Survey Kit
SYG-STK-TAB	Sygno-fi Wireless Survey Kit with Tablet



RADIO SURVEY REQUIRED

RADIO FIRE ALARM SYSTEMS



The Euro-Fi wireless fire system is market leading, in both its depth of the product range and the technology of its components. Designed and built around the latest standards ensures the system provides the same high levels of reliability and life safety provided by a wired system, alongside the superior flexibility of wireless technology. The wireless elements can be used on their own to build wholly wireless systems of virtually any size and complexity or mixed with the Euro-Fi wired products to provide seamless hybrid solutions which are both highly competitive and extremely flexible.

EURO-FI MODULES

Part No.	Description
EUW-W2W-01	Euro-fi Wireless Translator Module (Loop Powered)
EUW-EM-01	Euro-fi Wireless Expander Module (Requires Power Supply)
EUW-BOM-01	Wireless Single Channel Output Module C/W Batteries
EUW-IM-01	Wireless Single Channel Input Module c/w batteries
EUW-CEM-02	Wireless to Conventional Expander Module (Requires PSU)



EURO-FI FEILD DEVICES

Part No.	Description
EUW-MA-02	Intelligent Wireless Multi Criteria Detector c/w base & batt
EUW-PA-02	Intelligent Wireless Optical Smoke Detector c/w base & batts
EUW-TA-02	Intelligent Wireless Heat Detector c/w base & batts
EUW-BS-02	Wireless Base Sounder
EUW-BSB-02	Wireless Base Sounder Beacon
EUW-SBC-05	Wireless Base Sounder Cover (white)
EUW-WSR-01	Wireless Wall Sounder (Red)
EUW-SBR-01	Wireless Sounder Beacon (Red)
EUW-CP-RS	Euro-fi Wireless Indoor Manual Call Point



EURO-FI REMOTE INDICATOR

Part No.	Description
EUW-RI-02	Wireless Remote Indicator c/w Back Box & Batteries - Static



EURO-FI DOOR HOLDER

Part No.	Description
HFW-DHR-01	Wireless Door Holder



EURO-FI SURVEY KIT

Part No.	Description
EUW-STK-03	Survey Kit



RADIO COMMUNICATION EQUIPMENT



Since 1982, Scope has grown from being an importer and distributor of radio equipment to its present-day position as a leading UK designer, manufacturer and exporter of high reliability UHF radio systems covering all aspects of On-Site Paging, Security and Telemetry

F-LINK4 - SUPERVISED TELEMETRY TRANSCEIVER

Used mainly for fire and security panel linking but can also be used for any form of wireless linking.

Part No.	Description
FLINK4KIT	F-Link 4 Wireless Radio Link Tranceiver Kit (Comprising of 2xF-Links)
FLINK4	F-Link 4 Wireless Radio Link Tranceiver
FLXP15	15 Zone Relay Expansion Unit For F-Link 4 Master
FLXP30	30 Zone Relay Expansion Unit For F-Link 4 Master



PAGETEK PRO FIRE PAGING FOR THE HEARING IMPAIRED

Designed for the evacuation of the hard of hearing in accordance with BS5839 - if applicable this unit can not only send a simple evacuation messages to 1 group of pagers but can also send full panel info to another.

Part No.	Description
PTPRO/2L	PageTek Pro 2 Paging Transmitter For The Hearing Impaired. Mains Powered, Fully Monitored. 2W RF Output
PTPRO/2LM	PageTek Pro 2 Paging Transmitter For Hearing Impaired & Maintenance Staff. With RS232 Panel Link (For Supported Panels Only). Requires 18Ah Backup Battery



STANDARD PAGERS

Part No.	Description
GEO40A10M	GEO Scribe, 40 Char, Two Line Text Pager, Tone/Vibrate. With Bungee, Holster, Battery & Pager Pocket
GEO87ZM	4 Line / 8 Line (Selectable) Alphanumeric Pager. Text Pager, Tone/Vibrate. With Bungee, Holster & Battery



PAGING EXPANSION

Part No.	Description
CX6F4AC	Connexions 6 paging transmitter, mains
CX6F4DC	Connexions 6 paging transmitter, 12vdc
GEO87ZM	Geo Zoom 8/4 line text pager



OPTIONAL AERIALS

Part No.	Description
LDPMSA	Lightweight dipole aerial, SMA connector



POWER SUPPLIES FOR FIRE SYSTEMS

24V EN54 APPROVED POWER SUPPLIES

Part No.	Description
STX2401-C	Elmdene 1a 24v Power Supply (holds 2 x 7ah batteries)
STX2402-C	Elmdene 2.5a 24v Power Supply (holds 2 x 7ah batteries)
STX2402-E	Elmdene 2.5a 24v Power Supply (holds 2 x 18ah batteries)
STX2405-C	Elmdene 5a 24v Power Supply (holds 2 x 7ah batteries)
STX2405-E	Elmdene 5a 24v Power Supply (holds 2 x 18ah batteries)
G2410BM-E	24v 10a Power Supply - Max 2 x 18a/hr Batteries



24V TXRX POWER SUPPLIES

Part No.	Description
TRS1	Boxed 24Vdc Power Supply - 1A (185x200x60mm)
TR4	Boxed 24Vdc Power Supply - 4A (200x230x80mm)
TR2	Boxed 24Vdc Power Supply - 2A (200x230x80mm)



DOOR RETAINERS & OVER DOOR CLOSERS

EXIDOR DOOR CLOSERS

Part No.	Description
EX9870R-SV	Door Closer Hold Open/Free Swing 24V - Silver (Radius Cover) 95m/A
EX9880R-SV	Door Closer Anti Slam Free Swing 24V - Silver (Radius Cover) 95m/A



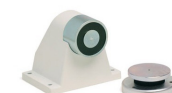
MAGNETIC DOOR RETAINERS WALL MOUNTED

Part No.	Description
DH/EC/24/200	Door Retainer 24v Wall Mount (Plastic) 48m/A
DH/EC/230/200	Door Retainer 230v Wall Mount (Plastic) 48m/A
DH/S/24	Door Retainer 24v Wall Mount (Metal) 50m/A
DH/S/230	Door Retainer 230v Wall Mount (Metal) 50m/A



MAGNETIC DOOR RETAINERS FLOOR MOUNTED

Part No.	Description
DH/HD/FM/200	24v dc 200N With Keeper Plate 45m/A
DH/HD/FM/500	24v dc 500N c/w Keeper Plate 55m/A



MAGNETIC DOOR ACCESSORIES

Part No.	Description
DH/CHO	Keeper Plate With 1m Chain & Rubber Ring Grommet
DH/FB	Floor Bracket For Door Holder



FIRECO PRODUCT

Part No.	Description
DORGARD-SS-B	Dorgard SmartSound Black
DORGARD-SS-W	Dorgard SmartSound White
FREEDOR	Battery Operated Overhead Door Holder
DEAFGUARD	Battery Operated Vibrating Pillow



AGRIPPA

Part No.	Description
302-111	Agrippa Acoustic Door Retainer - White
302-121	Agrippa Floor Mounting Bracket
302-116	Agrippa Door Closer Unit
405-001	Agrippa Pillow Arm Unit



BEAM & FLAME DETECTION



FIRERAY Optical Beam Smoke Detectors are an efficient and economical way of providing 'wide area' smoke detection. They are usually used in situations where it is impractical, inappropriate or not cost effective (installation, wiring and maintenance) to use traditional point type detectors and they also enable coverage of a large area at minimal cost.

FIRERAY 5000

The Fireray® 5000 motorised reflective, auto aligning infrared optical beam smoke detector can be installed with up to two detector heads per system, thus saving on installation time and costs. In addition, each system controller houses two pairs of fire and fault relays, one per detector.

Part No.	Description
5000-101	FIRERAY 5000 Self Aligning Beam System - 50m
5000-102	FIRERAY 5000 Self Aligning Beam System - 100m
5000-002	FIRERAY 5000 Single Detector Pack - 50m
5000-039	FIRERAY 5000 Single Detector Pack - 100m
1010-000	FIRERAY 5000 Long Range Kit



FIRERAY 3000

The Fireray® 3000 End to End Infrared Optical Beam Smoke Detector (OBSD) has been designed using the latest optical technology, incorporating modern industrial, electronic and software techniques. The system allows for two detectors per system controller with a range of 5 to 120 metres, configurable per set of detectors.

Part No.	Description
3000-101	FIRERAY 3000 Beam System 5-120m
3000-015	FIRERAY 3000 Additional Transmitter & Receiver Head Set



FIRERAY ONE

The Fireray One is a standalone reflective beam detector with auto alignment, building movement tracking and light cancellation technology, with an operating range of up to 50m or 120m with the Fireray long range kit.

Part No.	Description
6010-100	FIRERAY One Beam Detector
1010-000	FIRERAY Long Range Kit



OSID by Xtralis provides reliable, cost effective smoke detection for open spaces where fire detection presents unique challenges and where very early warning is not always the priority. Open-area smoke Imaging Detection (OSID) is a new innovation in projected beam smoke detection technology. By using advanced dual wavelength projected beams and optical imaging technology for early warning smoke detection, OSID provides a low cost, reliable and easy to install solution that overcomes typical beam detection issues such as false alarms, incidents and alignment difficulties.

OSID can support up to 7 emitters with a maximum range of 150m per unit, connected to a single imager making it easier to deploy in unusually shaped areas. Emitters can be placed at different heights to overcome stratification and provide earlier detection.

OSID

Part No.	Description
OSI-10	Imager - 7° Coverage, 24V DC
OSI-90	Imager - 80° Coverage, 24V DC
OSE-SP-01	Emitter - Standard Power, Battery Version
OSE-SPW	Emitter - Standard Power, Wired At 24V DC
OSE-HPW	Emitter - High Power, Wired At 24V DC
OSID-INST	OSID Installation Kit



BEAM DETECTION

thefirebeam™

The standard Fire Beam Xtra package comes complete with the head unit, the low level controller, a single reflector, a user manual and a 3mm allen key. This will enable you to cover distances up to 70 metres. To cover distances over 70 metres just add one of our range kits to extend the coverage up to 160 metres.

FIREBEAM XTRA

Part No.	Description
FIREBEAM XTRA	FIREBEAM XTRA Self Aligning Optical Beam Smoke Detector: 7-70m
70-KIT-140	FIREBEAM XTRA Mid Range Extension Reflector Kit: 70-140m
140-KIT-160	FIREBEAM XTRA Long Range Extension Reflector Kit: 140-160m



FIREBEAM XTRA ANTI FOG

Part No.	Description
FOGKIT	FIREBEAM XTRA Anti Fog Window For Head & Single Anti Fog Reflector
REF-AF	FIREBEAM XTRA Single Anti Fog Reflector
WINDOW-AF	FIREBEAM XTRA Anti Fog Window
FIREBEAM XTRA-AF	FIREBEAM XTRA Anti Fog
70-KIT-140-AF	FIREBEAM XTRA Anti Fog Extension Kit: 70-140m
140-KIT-160-AF	FIREBEAM XTRA Anti Fog Extension Kit: 140-160m



FIREBEAM XTRA ACCESSORIES

Part No.	Description
REFLECTOR	FIREBEAM Xtra Single Reflector
REP-CONT	FIREBEAM Xtra Replacement Controller
ADAPTER	FIREBEAM Xtra Head Interface Adapter To Mount To Unistrut
SHORT RM	FIREBEAM Xtra Short Range Make For Up To 20 Metres
FB-BRACKET	FIREBEAM Xtra Adjustable Wall Bracket For Firebeam Or Single Reflector
PSUFB24	FIREBEAM Xtra 1.5A 24V Power Supply



firebeam BLUE

Key features:

- Industry leading self aligning motorised technology'
- '160 metre range'
- 'App based Bluetooth phone operation'
- 'VdS Approved No.G221060'
- 'Saves time and money'

FIREBEAM BLUE

Part No.	Description
FIREBEAMBLUE	FIREBEAM BLUE Self Aligning Optical Beam Smoke Detector: 7-70m

AIR SAMPLING



VESDA by Xtralis very early warning aspirating smoke detection solutions with continuous air sampling provide the earliest possible warning of an impending fire hazard. VESDA aspirating smoke detectors buy the critical time needed to investigate an alarm and initiate an appropriate response to prevent injury, property damage or business disruption.

VESDA VEP DETECTORS

Part No.	Description
VEP-A00-P	4 Pipe VEP With LED's (200m Total Pipe Length, 100 Holes)
VEP-A10-P	4 Pipe VEP With 3.5" Touchscreen Display - Black Plastic (200m Total Pipe Length, 100 Holes)
VEP-A00-1P	Single Pipe VEP With FOK LED's - Black Plastic (100m Total Length, 45 Holes)



VESDA VES DETECTORS

Part No.	Description
VES-A10-P	Vesda-E Scanner 3.5 Display
VES-A00-P	VESDA-E VES DET LED



VESDA STX POWER SUPPLY UNITS BLACK

Part No.	Description
VPS-220-STX5	VESDA-E STX PSU 0.5A 14Ah - Black
VPS-250-STX5	VESDA-E STX PSU 2A 24Ah - Black



VESDA VEU DETECTORS

Part No.	Description
VEU-A00	4 Pipe VEU With LED's (400m Total Pipe Length, 100 Holes)
VEU-A10	4 Pipe VEU With 3.5" Display (400m Total Pipe Length, 100 Holes)



VESDA STX POWER SUPPLY UNITS SILVER

Part No.	Description
VPS-220-STX5-SLV	VESDA-E STX PSU 0.5A 14Ah - Silver
VPS-250-STX5-SLV	VESDA-E STX PSU 2A 24Ah - Silver



VESDA VEA DETECTORS

Part No.	Description
VEA-040-A00	VESDA-E VEA-40 With LED's (Mix 10m Max 100m Pipe Length, Single Hole Per Pipe)
VEA-040-A10	VESDA-E VEA-40 With 3.5" Display (Min 10m Max 100m Pipe Length, Single Hole Per Pipe)
VER-A40-40-STX	VESDA-E VEA 40-Relay Local StaX



VESDA VEA PIPEWORK

Part No.	Description
VSP-980-W	VESDA-E VEA 6mm Standard Sampling Point - White
VSP-980-B	VESDA-E VEA 6mm Standard Sampling Point - Black
VSP-981-W	VESDA-E VEA 4mm Standard Sampling Point - White
VSP-982-W	VESDA-E VEA 6mm Surface Mount Sampling Point - White
VSP-983-W	VESDA-E VEA 4mm Surface Mount Sampling Point - White
VAP-990	VESDA-E VEA 6mm Microbore Tube 1000ft UL Compliant
VSP-991	VESDA-E VEA 4mm Microbore Tube 500ft UL Compliant
VSP-1000	VESDA-E VEA 6mm To 4mm Reducer (10)



AIR SAMPLING



VESDA VLI DETECTORS

Part No.	Description
VLI-880	Vesda VLI Industrial Aspirating Smoke Detector
VLI-885	Vesda VLI Industrial Aspirating Smoke Detector With Vedanet ¹



VESDA VLF DETECTORS

Part No.	Description
VLF-250	1 Pipe Vesda Laser Focus 250 (25m Total Pipe Length, 12 Holes)
VLF-500	1 Pipe Vesda Laser Focus 500 (50m Total Pipe Length, 30 Holes)



VESDA POWER SUPPLY UNITS

Part No.	Description
VPS-215-E5	24V 0.5Amp Power Supply Unit (Small Enclosure - Space For 7Ah Batteries)
VPS-220-E5	24V 0.5Amp Power Supply Unit (Larger Enclosure - Space For 12Ah Batteries)
VPS-250-E5	24V 3Amp Power Supply Unit (Space For 38Ah Batteries)



ECO DETECTORS

Part No.	Description
ECO-D-B-11	ECO DET H2 0-100%LFL REL/AN OUT
ECO-D-B-12	ECO DET CH4 0-100%LEL REL/AN OUT
ECO-D-B-14	ECO DET H2 0-2000RPM REL+AN OUT
ECO-D-B-31	ECO DET O2 0-25%V/V REL+AN OUT
ECO-D-B-32	ECO DET O2 0-25%V/V REL+AN OUT
ECO-D-B-41	ECO DET CO 0-500RPM REL+AN OUT
ECO-D-B-45	ECO DET NO2 0-10PPM REL+AN OUT
ECO-D-B-49	ECO DET CO2 0-5%V/V REL+AN OUT



VESDA PIPEWORK

Part No.	Description
PIP-001	Pipe 25mm 3 Metres - Red
PIP-002	Jointing Socket 25mm
PIP-003	Socket Union 25mm
PIP-004	Adaptor 25/27mm
PIP-005	90 Degree Bend 25mm
PIP-006	45 Degree Bend
PIP-007	End Cap 25mm
PIP-008	Tee 25mm
PIP-009	Clip 25/27
PIP-012	Solvent Cement 250ml
PIP-016	T-Piece Capillary Connector 25mm
PIP-017	90 Degree Elbow 25mm
PIP-018	Test Point
PIP-026	Flexible Bend 30cm
059-001	Flush Capillary Kit
128-014	Sample Point Label (Roll Of 100)
SC10-28	M10 Rod Clip 28mm
222-059	Discrete Sample Point (pack of 10)



VESDA SPARES

Part No.	Description
VSP-005	Vesda Detector Filter Cartridge
VSP-025	Vesda Detector Filter Cartridge - Pack Of 20
VSP-962	Vesda-E VEP Spare Filter
VSP-972	Vesda-E VEA Spare Filter



PA/VA SYSTEM

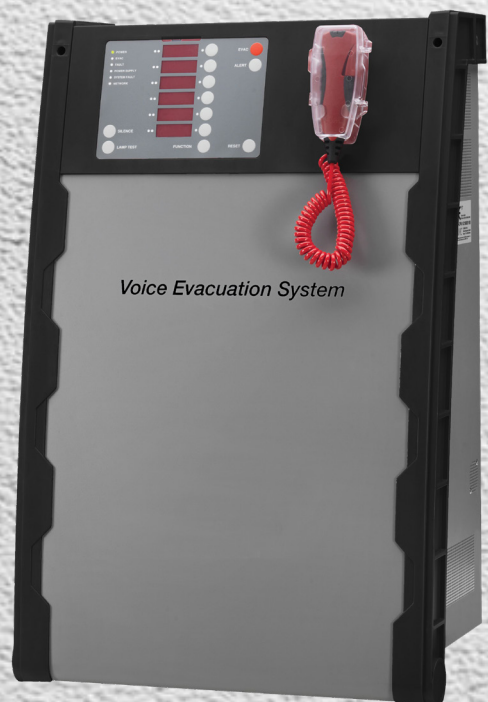
A number of PA/VA Systems are available from a number of manufacturers including:



BALDWIN BOXALL
LEADING THE WAY TO SAFETY



Illumino Ignis Ltd
LIGHTING & FIRE DESIGN, SUPPLY & SUPPORT



EMERGENCY CALL SYSTEM



BALDWIN BOXALL
LEADING THE WAY TO SAFETY

OMNICARE SYSTEM CONTROL

Part No.	Description
BVOC4M	Omnicare 4-Way Control Panel
BVOC8M	Omnicare 8-Way Control Panel
BVOC16M	Omnicare 16-Way Control Panel
BVOC32M	Omnicare 32-Way Control Panel
BVCRFB2	Omnicare 4-32-Way Flush Mount Bezel
BVOC48	Omnicare 48-Way Control Panel
BVOC64	Omnicare 64-Way Control Panel
BVCRFB1	Omnicare 48-68-Way Flush Mount Bezel
BVOC80	Omnicare 80-Way Control Panel
BVOC96	Omnicare 96-Way Control Panel
BVOC112	Omnicare 112-Way Control Panel
BVOC128	Omnicare 127-Way Control Panel
BVCRFB3	Omnicare 80-127-Way Flush Mount Bezel



OMNICARE DISABLED REFUGE REMOTE

Part No.	Description
BVOCECPG	Omnicare Refuge Remote Standard
BVCRMGRN	Omnicare Flush Mount Bezel Standard
BVCRIPBG	Omnicare IP65 Rated Enclosure



OMNICARE TELEPHONE

Part No.	Description
BVOCF	Omnicare Fire Telephone - Push Door
BVFHBEZ	Omnicare Fire Telephone Flush Mount Bezel
BVOCET	Omnicare Steward Telephone - Push Door



OMNICARE COMBINED UNIT

Part No.	Description
BVOCC	Omnicare Combined Unit - Push Door
BVOCFBR	Omnicare Combined Unit Flush Mount Bezel



OMNICARE DISABLED TOILET ALARM

Part No.	Description
DTAKIT	Omnicare Disabled Toilet Alarm - 3 Part Kit
DTACP	Omnicare Ceiling Pull Cord
DTAODL	Omnicare Over-Door Light
DTARP	Omnicare Reset Point



OMNICARE ASSISTANCE CALL

Part No.	Description
DTACB	Omnicare Call Button
DTACBRP	Omnicare Call + Reset Button
DTACPW	Omnicare Wall Mount Pull Cord



OMNICARE IP65 RATED TOILET ALARM

Part No.	Description
DTACPM	Omnicare IP65 Pull Cord
DTACBM	Omnicare IP65 Call Button
DTARPM	Omnicare IP65 Reset Button
DTACBRPM	Omnicare Call Button + Reset Button



OMNICARE MISCELLANEOUS

Part No.	Description
BVOCRIF	Omnicare Repeater Unit
BVOCCA	Omnicare Remote Lamp/Buzzer



EMERGENCY CALL SYSTEMS



Vox Ignis specialise in the design and manufacture of specialist audio products for the fire and disabilities markets. All the designs use the latest technologies, high quality finishes and fully comply with the standards and requirements that cover their application.

TOUCH SCREEN MASTER STATIONS

The Lexicomm ViLX-TMS Master station can accept up to eight lines of outstation, (Type A fixed phones, Type B refuge hands free points as required). The touchscreen layout has four buttons allowing quick access to the main functions and permanently displaying the number of current calls, alarms and faults.

Part No.	Description
ViLX-TMS-W-8	Lexicomm Touchscreen Complete With 8 Integral Lines
ViLX-TMS-W-0	Lexicomm Touchscreen Master Station Non Line Master Repeater
ViLX-TMS-W-8-SS	Lexicomm Touchscreen Master Station With Stainless Steel Fascia & 8 Integral Lines
ViLX-TMS-W-0-SS	Lexicomm Touchscreen Master Station Non Line Master Repeater With Stainless Steel Fascia



228 MASTER STATIONS

Designed for ease of installation and commissioning the LX228 is a solution for smaller projects, but with built in networking it can form the local control element of complex campus style systems. Enhanced engineer functions, such as single engineer test and line identify reduce time and expense for both commissioning engineers and facilities maintenance companies.

Part No.	Description
ViLX-228-0	Lexicomm Master Station Non Line Master Repeater
ViLX-228-2	Lexicomm 2 Line Master Station
ViLX-228-4	Lexicomm 4 Line Master Station
ViLX-228-8	Lexicomm 8 Line Master Station
ViLX-LC2	Lexicomm 2 Way Line Card PCB To Allow Expansion Of ViLX-228 & ViLX-TMS Controllers
ViLX-72HR-BOX	Battery Box to Hold NP18 Battery



BEZEL FOR MASTER STATIONS

Part No.	Description
ViLX-CBZ	Flush Mount Stainless Steel Bezel For ViLX-228 & ViLX-TMS Controllers



8 WAY EXPANDER UNIT

Part No.	Description
ViLX-EX8-8	Lexicomm 8 Line Network Change



REMOTE ALARM PANEL

Part No.	Description
ViLX-RAP	Lexicomm Remote Alarm Panel



OUTSTATIONS

Part No.	Description
ViLX-OSA	Lexicomm Surface Type A Fire Telephone Handset In A Stainless Steel Box
ViLX-OSB-SS	Lexicomm Type B Refuge Point On A Double Gang Stainless Steel Plate (Back Box Not Supplied)
ViLX-OSB-G	Lexicomm Type B Refuge Point On A Double Gang Green Plate (Back Box Not Supplied)
ViLX-BSS-G	Lexicomm Type B Green Back Box
ViLX-OSC	Lexicomm Combined Type A Telephone & Type B Refuge Point In A Surface Stainless Steel Box
ViLX-OBZ	Flush Mounting Stainless Steel Bezel For The ViLX-OSA & ViLX-OSC
ViLX-IPA	Lexicomm IP66 Weatherproof Type A Fire Telephone With A Locking Enclosure
ViLX-IPB	Lexicomm IP65 Weatherproof Type B Refuge Point In A Clear Enclosure With A Flip Cover
ViLX-ILB-F	Lexicomm Type B Refuge Point With Induction Loop - Flush Mount
ViLX-ILB-S	Lexicomm Type B Refuge Point With Induction Loop - Surface Mount



ASSIST CALL SYSTEMS



The "Assist Call" system is designed to provide a fully compliant and scalable solution to building owners with many unique benefits, including clear indication, acoustic and visual feedback and high quality stainless steel finishes to blend into all locations. In simple systems where the accessible room is in a permanently staffed area, a basic kit can be used. For simplicity all wiring is standard two core cable and unlike other systems the wiring order of the devices is not fixed, allowing the designer total flexibility in the install routes.

ASSIST CALL FULL KITS

Part No.	Description
ViAC-STK	Assist Call Standard Kit, Includes 1x PSU (Over Door) 1x Cancel Plate, 1x Pull Cord & 1x WC Sticker. Brushed Stainless Steel Plates With Blue Halo Indication
ViAC-RTK	Assist Call Remote Kit, Includes 1x Zone Controller PSU With Accept, 1x Over Door Plate, 1x Cancel Plate, 1x Pull Cord & 1x WC Sticker. Brushed Stainless Steel Plates With Blue Halo Indication



ASSIST CALL CONTROLLERS

Part No.	Description
ViLX-ACM-8	Lexicomm Assist Call Touchscreen Master Station, Supplied In A Wall Mount Enclosure, 4.3" High Contrast Full Colour Touchscreen Display, Built In Network, Complete With 8 Integral Lines For Connection To Assist Call Systems
ViLX-EX8-8	Lexicomm Assist Call 8 Line System Expander Panel, Supplied In A Wall Mount Enclosure, Connects To Assist Call Toilet Zone Kit, Type A, Type B & Type C. Built In Network Allows 64 Panels To Be Connected For Large Network Projects. Complete With 8 Integral Lines
ViLX-EBZ	Flush Mount Stainless Steel Bezel For The ViLX-228 & ViLX-TMS Controllers
ViLX-ACR	Assist Call Touchscreen Repeater (To Be Used With ViLX-EX8)
ViAC-1ZC	Assist Call 1 Zone Controller With Combined PSU, Brushed Stainless Steel Finish, Double Gang Plate With Blue Halo Indication, Accept Button, Buzzer, Active Relay & Connection For ViAC-BAT Battery Pack
ViAC-4ZC	Assist Call 4 Zone Controller Brushed Stainless Steel Finish, Double Gang Plate With Blue Halo Indication, 4 Zone Indicators, Buzzer, Buzzer Volume Control, Active Relay & Accept Button. Requires ViAC-PSU For Power. Mounts Onto Double Gang Electrical Socket Box
ViAC-PSU	Assist Call Power Supply Unit, Brushed Stainless Steel Finish, Double Gang Plate



ASSIST CALL 2 WIRE SYSTEM - EXPANSION KITS

Part No.	Description
ViAC-ACA	Lexicomm Assist Call Alarm WC System, Includes Over Door Plate, Cancel Plate & Pull Cord
ViAC-ACB	Assist Call Accessible Bedroom Zone Kit, Inc. 1x Over Door Plate, 2x Cancel Plate, 3x Pull Cord & 1x WC Sticker. Brushed Stainless Steel With Blue Halo Indication.



ASSIST CALL CONTROLLERS

Part No.	Description
ViAC-PSC	Assist Call Power Supply With Integrated Over Door Indicator, Brushed Stainless Steel Finish, Double Gang Plate With Blue Halo Indication, Buzzer, Active Relay & Connection For ViAC-BAT Battery Pack
ViLX-ODP	Assist Call Over Door Plate, Brushed Stainless Steel Finish, Single Gang Plate With Blue Halo Indication & Buzzer
ViLX-CNP	Assist Call Cancel Plate, Brushed Stainless Steel Finish, Single Gang Plate With Blue Halo Indication & Buzzer
ViLX-CPP	Assist Call Pull Cord, Brushed Stainless Steel Finish, Single Gang Plate With Blue Halo Indication & 3m Cord With Two 50mm Diameter Red Rings
ViAC-BAT-2	Assist Call Battery Pack, 600mAH NIMH Rechargeable Battery Pack, Fits ViAC-PSC
ViAC-WCS	Assist Call Disabled WC Sticker - Pack Of 10
ViAC-SSP	Assist Call Single Gang Brushed Stainless Steel Pattress Cover For Surface Back Box
ViLX-SIP	Assist Call Switch Interface Plate, Brushed Stainless Steel Finish, Single Gang Plate With Blue Halo Indication. Used For Connection Of Ext Switches Such As Press Switch Strip
ViLX-CLP	Assist Call Plate, Brushed Stainless Steel Finish, Single Gang Plate With Blue Halo Indication
ViLX-CLP-56	Yellow Mushroom



REFUGE SYSTEMS



WIRELESS REFUGE SYSTEM

Part No.	Description
R60001	KTP Wireless Refuge System Master Panel
R60002	KTP Wireless Refuge Outstation



BATTERY POWERED DISABLED TOILET ALARM KIT

Part No.	Description
A600LKITB	Battery Powered Disabled Toilet Alarm Kit



The Sigtel range of refuge systems comprises of two wall mounting master controllers, the ECU-4 & ECU-8 which can handle 4 & 8 lines respectively, and an eight line expansion unit, the ECU-8S. Typically located in a buildings control room or fire services access point, the ECU-4 & ECU-8 allow management and/or the fire services to communicate via a telephone style handset with the system's outstations. Two types of outstation are available (Type A and Type B). Type B outstations offer true handsfree duplex speech and allow anyone in a refuge area to communication with building control at the touch of a button. Type A telephone style outstations are designed for use in stadium marshalling systems and other emergency evacuation applications. Comprising a telephone handset in a push to open or key lockable red steel cabinet.

SIGTEL SYSTEM CONTROLLERS

Part No.	Description
ECU-4	4 Line Master EVC Control Unit With Line Cards, Handset & Display
ECU-8	8 Line Master EVC Control Unit With Line Cards, Handset & Display
ECU-8NT	8 Line Master EVC Control Unit With Line Cards & Display
ECU-16	16 Line Master EVC Control Unit With Line Cards, Handset & Display
ECU723	Network Communication Card



TYPE B OUTSTATIONS

Part No.	Description
EVC302GF	Green Handsfree EVC Outstation, Flush Mounting
EVC302GS	Green Handsfree EVC Outstation, Surface Mounting
EVC302F	Stainless Steel Handsfree EVC Outstation, Flush Mounting
EVC302S	Stainless Steel Handsfree EVC Outstation, Surface Mounting
BF359/1	IP66 Rated Enclosure to be used with Flush Version



FIRE TELEPHONES

Part No.	Description
EVC301RPO	Red Fire Telephone EVC Outstation With Handset (Push To Open Version)
EVC301RLK	Red Fire Telephone EVC Outstation With Handset (Lift Lock Version)



ACCESSORIES

Part No.	Description
FiTT	EVC Line Tester
XSA	Amber Xenon Strobe, 12V
SDM	Strobe Driver Module, 12V
EVC423	Programming Configurator



LOOP INDUCTION SYSTEMS



Audio frequency Induction Loop Systems (AFILS) allow hearing impaired people to hear more clearly. Hearing aids with the 'T' or 'MT' switch are able to pick up electromagnetic field generated by an induction loop system and this signal is converted into a sound suited to the user's hearing requirements. Any person with a suitable hearing aid positioned within or near the loop can hear the loop signal, allowing them to participate more easily in conversation, ordering goods or services, listening to public performances etc.

PORTABLE INDUCTION KITS

Part No.	Description
PL1 /K1	Portable Induction Loop Kit, Supplied In Cardboard Carry Case
PL1 /K3	Portable Induction Loop Kit, Supplied In Plastic Carry Case
TEAR-P	Spare 'AFILS Available' Sticker



COUNTER INDUCTION KITS

Part No.	Description
ML1/K	ML1 Counter Induction Loop Kit
PDA103C	PDA103 Counter Induction Loop Kit



SMALL ROOM INDUCTION KITS - UP TO 6M WIDTH

Part No.	Description
AKM1	PDA200E 120m ² Meeting/Seminar Room Loop Kit
AKL1	PDA200E 120m ² Lecture Room Loop Kit
AKT1	PDA200E 120m ² TV/Music Lounge Loop Kit
AKR1	PDA200E 120m ² Waiting Room Loop Kit
AKW1	PDA200E 120m ² Place Of Worship Loop Kit 1
AKW2/L	PDA200E 120m ² Place Of Worship Loop Kit 2 (Lavalier Mic)
AKH1/L	PDA200E 120m ² Health & Fitness Club Loop Kit (Lavalier Mic)



PHASED ARRAY INDUCTION KITS - OVER 6M IN WIDTH

Part No.	Description
DLR5	4U Rack With Dual Hearing Loop Amplifiers For Areas up To 200m ²
DLR7	4U Rack With Dual Hearing Loop Amplifiers For Areas Up To 500m ²
DLR9	4U Rack With Dual Hearing Loop Amplifiers For Areas Up To 1000m ²



HEARING LOOP CABLE

Part No.	Description
LOOP2/W	100m x 1.0mm ² Single Core White Loop Cable
LOOP3/W	100m x 1.5mm ² Single Core White Loop Cable
FLAT2005	100m x 1.0mm ² Insulated Copper Tape (Flat Loop Cable For Under Carpets)
FLAT3005	100m x 1.5mm ² Insulated Copper Tape (Flat Loop Cable For Under Carpets)
TAPE/P	50m Printed Hearing Loop Foil Loop Tape



HEARING LOOP TEST KIT

Part No.	Description
FPROK1	FosMeter-Pro Hearing Loop Test Kit With Tester, Signal Generator & Headphones



CALL SYSTEM 800 SERIES



CTEC's 800 Series Call System is the UK's best selling call system ideal for use in any private, commercial, residential or public sector building to allow the general public, staff or patients to call for assistance. Their extensive range of ancillaries includes ceiling pulls, call points, overdoor lights, remote sounders, relays and call latch modules to create systems for hotels, leisure centres, nursing homes, care centres, shops, offices and more.

CONTROLLERS

Part No.	Description
NC942B	Single Zone Call Controller With 12V 140mA PSU, Reset Button, Relay
NC943B	Single Zone Call Controller With 12V 140mA PSU, Reset Button, Relay & On Board Battery
NC941/SS	Single Zone Call Controller Stainless Steel With 12V 250mA PSU & Reset Button
NC944	Four Zone Call Controller With Mute/Reset Button, Requires 12V PSU
NC944/SS	Four Zone Call Controller Stainless Steel With Mute/Reset Button, Require 12V PSU
NC930	Power Supply For Four Zone Controller
NC910S	10 Zone Call Controller, Surface Mount With 12V 300mA PSU
NC920S	20 Zone Call Controller, Surface Mount With 12V 300mA PSU
NC910ES	10 Zone Expansion Unit For NC910S Or NC920S
NC920ES	20 Zone Expansion Unit For NC910S Or NC920S



SYSTEM ACCESSORIES

Part No.	Description
NC806C	Overdoor Light
NC806CS	Overdoor Light & Sounder
NC806C/SS	Overdoor Light, Stainless Steel
NC806CS/SS	Overdoor Light & Sounder, Stainless Steel
NC807C	Ceiling Pull Unit, No On Board Reset, No Remote Socket
NC809DB	Button Reset Point
NC802DB	Standard Call Point, Button Reset, With Remote Socket
NC917L	Standard Call Push With Protruding Button, No On Board Reset, No Remote Socket
NC894DKB	Isolatable Monitoring Point, Button Reset, No Remote Socket
NC802DEB-1/2	Emergency Call Point, Button Reset, With Remote Socket, Standard & Emergency Calls
NC804DE	Emergency Call/Reset Point, Button Reset, No Remote Socket, Emergency Calls Only
NC803M/10	Magnetic Reset Keys - Pack Of 10



DISABLED TOILET ALARM

Part No.	Description
NC951	Standard Finish Disabled Toilet Alarm Kit
NC951/SS	Stainless Steel Finish Disabled Toilet Alarm Kit



CALL SYSTEM QUANTEC



Quantec is a powerful yet easy to use addressable call system that helps ensure vital communication throughout a building in environments where efficiency is paramount. Recently updated to include a host of new features, the system may be tailored to suit a care facility's specific requirements, exact operational needs and to the precise layout of any building. This flexibility makes Quantec the obvious choice for nursing homes, hospitals, health centres and many other private and public.

CONTROLLERS

Part No.	Description
QT601-2	Quantec Controller (Space Available For 2x7Ah Batteries)
QT385	Flush Bezel For Quantec Controller
QT603	Quantec Network Splitter



CORRIDOR DISPLAY

Part No.	Description
QT608C	Quantec Corridor Display, With Controls
QT608CD	Quantec Corridor Display, No Controls



SYSTEM ACCESSORIES

Part No.	Description
QT606	Quantec Overdoor Light
QT606A	Quantec Addressable Overdoor Light With Sounder
QT688	Quantec Addressable Sounder
QT688/2	Quantec High Output 85dB Addressable Sounder
QT602	Quantec Call Point, Button Reset With Socket
QT602RS	Quantec Call Point With Sounder & IR Receiver, Button Reset With Socket
QT602M	Quantec Call Point, Magnetic Reset With Socket
QT602RSM	Quantec Call Point With Sounder & IR Receiver, Magnetic Reset With Socket
QT607	Quantec Ceiling Pull Unit
QT604	Quantec Monitoring Point, Button Reset



DISABLED TOILET ALARM KIT

Part No.	Description
QT951	Disabled Toilet Alarm Kit



QUANTEC PROGRAMMING SOFTWARE

Part No.	Description
QT707	Quantec Upload/Download Programming Software With SAF7070000 Lead
QT423	Quantec Configurator With Lead & Software



SERVICE EQUIPMENT



At Detector Testers core are a range of products that replicate the stimuli that fire detection systems are designed to detect, thereby testing them safely to ensure they are triggered in the event of an incident. These award winning products have set the standard for the testing of fire detection systems and are recognised as market leaders worldwide.

SOLO TEST CANS

Part No.	Description
SOLO-A5	Smoke Test Can, 250ml (Flammable) For Use With SOLO330 Dispenser
SOLO-C3	CO Test Can, 250ml For Use With SOLO330 Dispenser
SMOKESABRE	Hand Held Detector Test Can, 150ml
251-003	Smoke Pellets (Pack of 6)



SOLO POLES AND ACCESSORIES

Part No.	Description
SOLO 101-001	Fiberglass Extension Pole - 1.13m
SOLO 108-001	Fiberglass 2 Section Telescopic Pole - 2.5m
SOLO 100-001	Fiberglass 4 Section Telescopic Pole - 4.5m
SOLO 200-001	Universal Detector Removal Tool
SOLO 610-001	Carry Bag, Separate Pole Bag Included



URBAN POLES AND ACCESSORIES

Part No.	Description
SOLO 611-001	Solo Urban Backpack & Pole Bag
SOLO 612-001	Urban Kit Pole Bag (Spare)
SOLO 613-001	Solo Urban Kit Backpack & Poles (5m)
SOLO 110-001	Fiberglass 4 Section Telescopic Pole - Retracted Length = 0.6m, Extended Length = 1.75m
SOLO 111-001	Fiberglass Telescopic Pole - 0.5m



SOLO HEAD TESTERS

Part No.	Description
SOLO 330-001	Aerosol Smoke And CO Dispenser
SOLO 461-001	Cordless Heat Detector Test Kit
SOLO 460-001	Cordless Heat Gun
SOLO 770-001	Battery Baton (Single)
SOLO 727-001	Mains And Car Charger 3.0A - For SOLO770-001 Batteries Only
SOLO 424-001	Mains Heat Detector Tester 220/240V



SOLO 365 HEAD TESTERS

Part No.	Description
SOLO 365-001	Solo 365 Smoke Detector Tester (Inc. Smoke Generator & Cartridge & Battery Pack)
SOLO 371-001	Solo 365 Smoke Generator
SOLO 370-001-1PACK-001	Solo 365 Battery Pack
SOLO ES3-121PACK-001	Solo 365 Smoke Cartridge
SOLO 372-001	Solo 365 Aspirating Tester Adaptor



TESTIFIRE HEAD TESTERS

Part No.	Description
TESTIFIRE 1000-001	Testifire Smoke/Heat Head Only
TESTIFIRE 2000-001	Testifire Smoke/Heat/CO Head Only
TESTIFIRE 1001-001	Testifire Smoke/Heat Head Kit
TESTIFIRE 2001-001	Testifire Smoke/Heat/CO Head Kit
TESTIFIRE TS3-6PACK-001	Testifire Replacement Smoke Capsules - 6 Pack
TESTIFIRE TS3-3PACK-001	Testifire Replacement Smoke Capsules - 3 Pack
TESTIFIRE TC3-6PACK-001	Testifire Replacement CO Capsules - 6 Pack
TESTIFIRE TC3-3PACK-001	Testifire Replacement CO Capsules - 3 Pack



SERVICE EQUIPMENT



SOLO 365 KITS

Solo Model No.	Access Height	Solo 365 Detector Tester	Solo 110 Short Telescopic Pole	Solo 111 Short Extension Pole	Urban Backpack	Solo 100 Access Pole	Solo 101 Extension Pole	Solo 108 Extension Pole	Solo 200 Removal Tool	Solo 610 Carrying Bag
URBAN365-001	5.0m	•	•	x3	•					

SOLO KITS

Solo Model No.	Smoke/CO Testing	Heat Testing	Access Height	Solo 330 Detector Tester	Solo 461 Cordless Heat Tester	Solo 424 Mains Heat Tester	Solo 100 Access Pole	Solo 101 Extension Pole	Solo 108 Extension Pole	Solo 200 Removal Tool	Solo 610 Carrying Bag
SOLO 812-001	•		8.2m	•			•	x2		•	•
SOLO 814-001	•	•	6.0m	•		•	•			•	•
SOLO 822-001	•	•	6.0m	•	•		•			•	•
SOLO 823-001	•	•	9.3m	•	•		•	x3		•	•

TESTIFIRE KITS

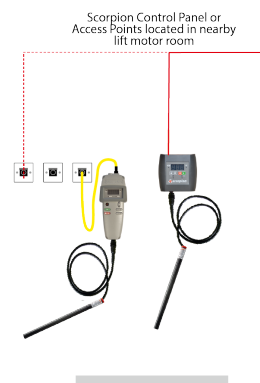
Testifire Kit No.	Smoke/Heat/CO Testing	Smoke/Heat Testing	Access Height	Solo 110 Short Telescopic Pole	Solo 111 Short Extension Pole	Urban Backpack	Solo 100 Access Pole	Solo 101 Extension Pole	Solo 200 Removal Tool	Solo 610 Carrying Bag
URBAN1001-1-001		•	5.0m	•	x3	•				
URBAN2001-1-001	•		5.0m	•	x3	•				
TESTIFIRE6201-001	•		6.0m				•		•	•
TESTIFIRE9201-001	•		9.3m				•	x2	•	•
TESTIFIRE6001-001		•	6.0m				•		•	•
TESTIFIRE9001-001		•	9.3m				•	x3	•	•



SCORPION - SIMPLE TESTING FOR HARD ACCESS AREAS

Part No.	Description
SCORP1011-001	Smoke Generating Head Unit & Access Point Kit For Point Smoke Detectors (1 Per Point Detector)
SCORP2011-001	Smoke Generating Head Unit & Access Point Kit For ASD Systems (1 Per ASD Pipe)
SCORP7000-001	Portable Controller For Scorpion System
SCORP8000-001	Wall Mount Controller For Scorpion System

Also Needed: Solo Battery Baton & Solo Charger



Lift shaft/s remain in use during the detector testing procedure



EMERGENCY LIGHTING

BULKHEADS

Part No.	Description
CAP/4/LED/EM/M	LED Bulkhead Maintained 4W
CAPR/KIT	Recessing Kit
CAP/EXT/DROP	Drop-down Attachment
CAP/4/LED/EM/STM	LED Bulkhead Maintained Self-Test 4W
EMRIP65BHLEDM	LED Bulkhead Maintained 6W



EXIT BOXES

Part No.	Description
EMREXSLED-M	Exit Box LED Maintained
EMREXSLED	Slim Exit Box LED 25mm



EXIT BLADES

Part No.	Description
EMRAQ/LED/D	LED Ceiling/Wall Mount Exit Sign
EMRLED/S/D/W	LED Exit Sign Suspended Maintained Arrow ↓
EMRLED/S/LGD/LR	Surface Exit Sign - Legend With Arrow ↔
EMRLED/S/LGD/UK	Surface Exit Sign - Legend With Arrow ↑
EMRLED/R/D/W	LED Exit Sign Recessed Maintained Arrow ↓
EMRLED/R/LR/LR	LED Exit Sign Recessed - Legend With Arrow ↔
EMRLED/R/LGD/U	LED Exit Sign Recessed - Legend With Arrow ↑



DOWN LIGHTER

Part No.	Description
AUR3/LED/REC/NM	LED Non-Maintained Downlight 3W
HAL2/LED/REC/NM	LED Recessed Downlight 2W Non-Maintained Circuit Distribution
HAL2/LED/SURF/DL/NM	LED Surface Downlight 2W Non-Maintained Dual Lens



CIRCULAR FITTING

Part No.	Description
LUC15LED/WH/EM/850	LED Emergency Bulkhead 15W IP54
POL15/WH/O/M3/840-850	LED Emergency Bulkhead 15W IP54
STAMFLED/WO/50K/EM	LED Emergency Bulkhead 15W IP40
MAX15/R/WH/O/M3/840-850	LED Emergency Bulkhead 15W IP65



SQUARE FITTING

Part No.	Description
MAXSQ15LED/V3/EM/50K	LED Bulkhead 15W IP65 5000K



TWIN SPOTS

Part No.	Description
SAG/2X3/LED/NM3	Twin Spot LED IP20 Non-Maintained
EMRTS/LED	Twin Spot LED IP65 Non-Maintained Self-Test
EMRTS/LED/NST	Twin Spot LED IP65 Non-Maintained, Non Self-Test



PANEL LIGHT FITTING

Part No.	Description
CELESTE600X600	600x600 Panel Light
CELESTE1200X600	1200x600 Panel Light
EMR/REC/M3/PACK	Emergency Pack Retrofitted To Panel Lights
CEL/SMF/66	Surface Mount Frame For 600x600 Panel
CEL/RMF/66	Recessed Mount Frame For 600x600 Panel



EMERGENCY LIGHTING AND SIGNS



CONTROL PANEL & PERIPHERALS

Part No.	Description
NEPTO-3K/HO	Control Panel
PVST-220/33	Power Supply
EL-IO	Input/Output Module
HHL-LAN	Ethernet Serial Adaptor
HED-PROG/USB	Programming Cable
EL-KP	Remote Keypad



LUMINAIRES

Part No.	Description
N68-C-3	Corridor Luminaire
N68-O-3	Open Area Luminaire
N55/3	Step Light
N89-C	High Powered Corridor Luminaire
N89-O	High Powered Open Area Luminaire
N68R-C-3	Recessed Corridor Luminaire
N68R-O-3	Recessed Open Area Luminaire
N89R-C	Recessed High Powered Corridor Luminaire
N89R-O	Recessed High Powered Open Area Luminaire



EXIT SIGNS

Part No.	Description
N20-3	20 Metre Exit Sign Frame
N40-3	40 Metre Exit Sign Frame
N20GR-F1	20 Metre Exit Sign Lens UP
N20GR-D1	20 Metre Exit Sign Lens DOWN
N20GR-R1	20 Metre Exit Sign Lens RIGHT
N20GR-L1	20 Metre Exit Sign Lens LEFT
N40GR-F1	40 Metre Exit Sign Lens UP
N40GR-D1	40 Metre Exit Sign Lens DOWN
N40GR-R1	40 Metre Exit Sign Lens RIGHT
N40GR-L1	40 Metre Exit Sign Lens LEFT



Fire and safety signs are essential to give clear visual guidance to employees, site visitors and the general public. We offer a range of signs which include Fire Action Signs & Fire Extinguisher Identification Signs. The signs are available in a variety of sizes and materials, including photoluminescent in order to provide you with the right signs for your application.

SIGNS

Part No.	Description
435KR	JALITE AAA Fire Exit Sign Right. 150x400 Rigid PVC
430KR	JALITE AAA Fire Exit Sign Left. 150x400 Rigid PVC
436KR	JALITE AAA Fire Exit Sign Forwards. 150x400 Rigid PVC
437KR	JALITE AAA Fire Exit Sign Down. 150x400 Rigid PVC
6434CR	JALITE AAA Do Not Use Lift In Case Of Fire Sign. 150x150 Rigid PVC
4304KR	JALITE AAA Push Bar To Open Sign. 150x400 Rigid PVC
4525AR	JALITE AAA Push Button To Exit Sign. 100x100 Rigid PVC
5421AR	JALITE AAA Fire Door Keep Shut Notice. 100x100 Rigid PVC
5257ER	JALITE AAA Fire Exit Keep Clear Notice. 200x200 Rigid PVC
5537DR	JALITE AAA General Fire Action Notice Including Assembly Point. 200x150 Rigid PVC
6370IDR	JALITE AAA ABC Powder Fire Extinguisher Sign. 105x105 Rigid PVC
6373IDR	JALITE AAA Foam Spray Fire Extinguisher Sign. 105x105 Rigid PVC
6374IDR	JALITE AAA Water Fire Extinguisher Sign. 105x105 Rigid PVC
6372IDR	JALITE AAA Carbon Dioxide Fire Extinguisher Sign. 105x105 Rigid PVC
6407IDR	JALITE AAA Wet Chemical Fire Extinguisher Sign. 105x105 Rigid PVC
6450DR	JALITE AAA Fire Alarm Sign. 200x150 Rigid PVC



LINEAR HEAT CABLE



Vimpex heat detection cable provides early detection of fire, heat and overheating in applications where other cable would not be viable.

The cable operates at a fixed temperature, is non resettable and comprises a twisted pair, two core cable with each core a tinned copper coated spring steel conductor with special heat reactive polymer insulation.

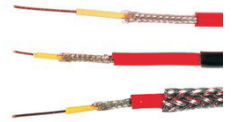
PATOL DIGITAL LHDC & CONTROLLER

Part No.	Description
63-1194	70°C Black Nylon Sheath (Price Per Metre)
63-1194-SS	70°C Black Nylon Sheath With Stainless Steel Armour (Price Per Metre)
63-1195	90°C Black Nylon Sheath (Price Per Metre)
63-1195-SS	90°C Black Nylon Sheath With Stainless Steel Armour (Price Per Metre)
63-1196	180°C Violet Hytrel Sheath (Price Per Metre)
63-1196-SS	180°C Violet Hytrel Sheath With Stainless Steel Armour (Price Per Metre)
63-1300	LDM-519-DDL Digital LHDC Monitor & Distance Locator 2KM (SIL 2 Certified)



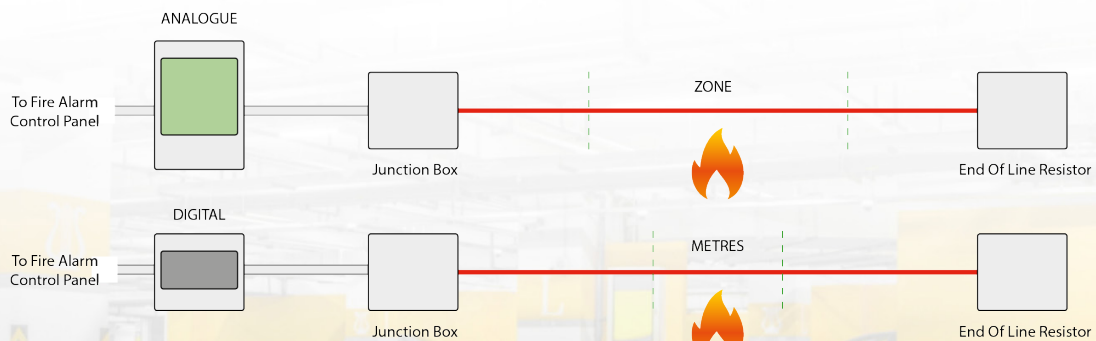
PATOL HEAT ANALOGUE

Part No.	Description
700-001	Red PVC Sheath (Price Per Metre)
700-005	Red PVC Sheath With Stainless Steel Armour (Price Per Metre)
700-003	Black Rilsan & UV Resistant Sheath (Price Per Metre)
700-004	Black Rilsan & UV Resistant Sheath With Stainless Steel Armour (Price Per Metre)
700-502	EOL Terminator Box - Polycarbonate
700-508	Junction Box - LHDC Through Connector - Polycarbonate



PATOL HEAT ACCESSORIES

Part No.	Description
63-1314	T Clip (Black) For LHDC - 4mm Dia Fixing Or Size 8 Pan Head Screw - Pack Of 25
700-660	P Clip With Neoprone Insulator - Internal Diameter 4mm (Each) For Use With LHDC Part Numbers: 63-1194, 63-1195, 63-1196
63-1192	P Clip With Neoprone Insulator - Internal Diameter 3mm (Each) For Use With LHDC Part Number: 63-1194-SS, 63-1195-SS, 63-1196-SS



WATER DETECTION



hydrosense

The Hydrosense Water Leakage Detection System is designed to protect areas where water ingress could seriously damage electrical, communication and computer networks. When installed in vulnerable areas it continuously monitors for water leaks. Hydrosense can be installed in a wide range of applications including HVAC, Sprinkler systems and water cooled plant.

HYDROSENSE HS CONTROL PANELS

Part No.	Description
HSCP-S-2-230	2 Zone Control Panel, 230 VAC
HSCP-S-4-230	4 Zone Control Panel, 230 VAC
HSCP-S-8-230	8 Zone Control Panel, 230 VAC



HYDROSENSE HS 230VAC REPEATER PANEL

Part No.	Description
HSRP-S-2-230	2 Zone Repeater Panel, 230 VAC
HSRP-S-4-230	4 Zone Repeater Panel, 230 VAC
HSRP-S-8-230	8 Zone Repeater Panel, 230 VAC



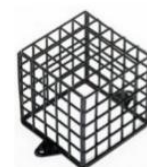
HYDROSENSE HS SYSTEM COMPONENTS

Part No.	Description
HS-WLDP	Hydrosense HS Hydro-Probe
HS-WLJB	Hydrosense HS Hydro-Probe Junction Box
HYDW-10	Hydro-Wire 10m
HYDW-05	Hydro-Wire 5m
HS-HWCI	Hydro-Wire HS Connection Interface
HS-HWCI-EOL	Hydro-Wire HS End Of Line Device



HYDROSENSE HS SYSTEM ACCESSORIES

Part No.	Description
HY-WLDP-DT	Hydrosense Probe Drip Tray Mounting Kit
HY-WLDP-C	Protection Cage For Hydrosense Probe
HY-FX	Fixing Clips For Leader Cable & Hydro-Wire, Screw Fix - Pack Of 100
HY-FXSA	Fixing Clips For Leader Cable & Hydro-Wire, Screw Or Adhesive Fix - Pack Of 100



HYDROSENSE ALARM & INDICATING EQUIPMENT

Part No.	Description
HSVS	"Water Leakage Alarm Activated" - Voice Sounder
HY-WLSMC	Short Message Communicator For Remote Alarm Via GPRS
HSSB1	Sounder/Beacon - White Sounder With Blue Beacon



TEMPORARY SITE ALARM



The Evacuator range of temporary site alarms offer an excellent means of raising the alarm when you do not have a fixed alert system in place. The Site Master is a 9 volt operated stand-alone Site Alarm which can be linked with up to twenty five other Site Masters using a two core cable. The Synergy range also offers a wireless option.

EVACUATOR SITE MASTER STANDALONE

Part No.	Description
FMCEVASMPB	Evacuator Site Master Push Button
FMCEVASMBG	Evacuator Site Master Call Point



EVACUATOR SITE MASTER WIRELESS BASE STATIONS

Part No.	Description
FMCEVASYNBS	Evacuator Synergy RF Base Station (39 Points)
FMCEVASYNGSM	Evacuator Synergy GSM "Text Master"



EVACUATOR SITE MASTER WIRELESS OUTSTATIONS

Part No.	Description
FMCEVASYN	Evacuator Synergy RF Call Point
FMCEVASYNFA	Evacuator Synergy RF Call Point With First Aid Function
FMCEVASYNSD	Evacuator Synergy Automatic Smoke Detector
FMCEVASYNHD	Evacuator Synergy Automatic Heat Detector
FMCEVAINT2	Evacuator Synergy Relay Interface
FMCEVASYNSS	Evacuator Synergy Strobe Alarm/Sounder



EVACUATOR SITE MASTER BATTERIES & BATTERY BACK UP

Part No.	Description
FMCEVAWBPack2	Evacuator Synergy RF Battery Pack
FMCEVAWBPack3	Evacuator Synergy TG Battery Pack
FMCEVAWBPack5	Evacuator Synergy Detection Battery Pack
FMCEVAPSU	Evacuator Synergy Battery Back Up



EVACUATOR SITE MASTER MOUNTING BOARD AND RESET

Part No.	Description
FMCEVASYNBOARD	Evacuator Mounting Board With Fire Action
FMCEVAFOB	Evacuator Synergy Reset Fob



HOWLER SITE ALERT RF

Part No.	Description
SA01	Howler Site Alert Alarm
SA02M	RF Howler Site Alert Master Unit
SA02S	RF Howler Site Alert Subsidiary Unit
SA02HD	RF Howler Site Alert Heat Detector



AOV SYSTEMS

WINDOW Master®

Fresh Air. Fresh People.

SMOKE VENTILATION PANELS

Part No.	Description
WSC204	Control Unit 1-Zone 24V 4.8A
WSC310-PLUS	Control Unit 2-Zone 24V 10A Touch Screen
WSC320-PLUS	Control Unit 2-Zone 24V 20A Touch Screen



CHAIN ACTUATORS

Part No.	Description
ACK424UNIB-RWA	Small Chain Actuator (RWA) 24V 100-400mm 300N - Black
ACK424UNIG-RWA	Small Chain Actuator (RWA) 24V 100-400mm 300N - Grey
ACK424UNIW-RWA	Small Chain Actuator (RWA) 24V 100-400mm 300N - White
WMU8361000	Chain Actuator 24V 1000mm 300N SAA
WMU836400	Chain Actuator 24V 400mm 300N SAA
WMU836600	Chain Actuator 24V 600mm 300N SAA
WMU836800	Chain Actuator 24V 800mm 300N SAA
WMU841000	Chain Actuator 24V 1000mm 400N SAA



CHAIN ACTUATOR BRACKETS

Part No.	Description
ACK4LPB	Large Pivot Brackets For ACK4 - White
ACK4LPBB	Large Pivot Brackets For ACK4 - Black
ACK4LPBG	Large Pivot Brackets For ACK4 - Grey
WAB836A	Small Pivot Brackets For WMU836/86/88
WAB836B	Large Pivot Brackets For WMU836/86/88
WAB836E	Vent Bracket For WMU836 Actuator
WAB836H	XL Pivot Brackets For WMU836/86/88



FOLDING ARM ACTUATORS

Part No.	Description
WDB820B	Door Bracket B For WMD820
WDB820L	Door Z Bracket For WMD820 - Left
WDB820M	Door Bracket Rail For WMD820
WDB820R	Door Z Bracket For WMD820 - Right
WMD820-1G-IN	Door Actuator 1A 300N - Inward Opening
WMD820-1G-OUT	Door Actuator 1A 300N - Outward Opening



INPUTS

Part No.	Description
BG1/FOS/O	Firemans Override Switch - Orange
BG1/S/O	Break Glass Call Point - Orange
BG2/FOS/O	Firemans Override Key Switch - Orange
WSA306	ASV-Module For Linking WSC System To Fire Alarm
WSK320	Manual Override Switch (Open, Close/Reset) Works With The WSC204 Panels
WSK501	Manual Override Switch (Open, Close/Reset) - Orange (Works With WSC310 & WSC320 Panels) With Additional Terminal To Connect Smoke Detector
WSK503	Manual Override Switch (Open, Close/Reset) - Orange (Works With WSC310 & WSC320 Panels)
55000-317	Apollo Series 65 Optical Detector
45681-201	Series 65 Diode Base



AUTOMATIC OPENING VENT CONTROL



Available with 1-8 detection circuits and 3A, 5A or 10A PSUs.

- 1-8 conventional or Twin Wire detector circuits
- Large LCD graphic display (MZAOV)
- Vent status indications & controls
- Vent control switch inputs

TW Twin Wire selectable

AOV AUTOMATIC OPENING VENT CONTROL PANELS

Part No.	Description
SZAOV-1001	Single zone non extendable, 3A PSU
MZAOV-1001A	Single zone non extendable, 3A PSU
MZAOV-1001	2 zone, extendable to 4, 3A PSU
MZAOV-1002	2 zone, extendable to 4, 5A PSU
MZAOV-1003	2 zone, extendable to 8, 10A PSU
MZAOV-3001	2 zone extension card
MZAOV-3002	PIR, Rain Sensor & BMS add on card

SMOKE VENT MANUAL CALL POINTS (470 Ohm)

Part No.	Description
MCP1A-Y-AOV	Smoke Vent manual call point, yellow, resettable
MCP1A-A-AOV	Smoke Vent manual call point, orange, resettable



SMOKE VENT FIREMANS SWITCH (3 POSITION, OPEN-AUTO-CLOSE)

Part No.	Description
WYK30S-AOV	Smoke Vent Firemans Key Switch, yellow
WAK30S-AOV	Smoke Vent Firemans Key Switch, orange



SMOKE VENT ROCKER SWITCH (3 POSITION, OPEN-AUTO-CLOSE)

Part No.	Description
WY9203-AOV	Smoke Vent rocker switch, yellow
WA9203-AOV	Smoke Vent rocker switch, orange



SMOKE VENT RAIN SENSER & PIR

Part No.	Description
GZ140226	Rain sensor
AFE-0001	Grade 2 Premier Elite TD (PIR)



AUTOMATIC OPENING VENT CONTROL



GEZE CHAIN DRIVE SLIMCHAIN

The GEZE Slimchain is for universal use. This chain can be integrated perfectly into the facade design thanks to its slim and discreet look.

Part No.	Description
GZ147030	Slimchain 24v DC/300mm/RH/0.9Amp/EV1 silver
GZ147035	Slimchain 24v DC/300mm/LH/1.1Amp/EV1 silver
GZ147040	Slimchain 24v DC/500mm/RH/1.1Amp/EV1 silver
GZ147045	Slimchain 24v DC/500mm/LH/1.1Amp/EV1 silver
GZ147062	Outward opening bracket/black
GZ147060	Inward opening bracket/black



GEZE CHAIN DRIVE POWERCHAIN

The GEZE Powerchain is suitable wherever large forces and very large opening widths are required. In addition, it facilitates fast opening speeds particularly for emergency smoke and heat extraction, even with very heavy windows.

Part No.	Description
GZ147080	Powerchain 24v DC/600mm /1.2Amp/EV1 silver
GZ147090	Powerchain 24v DC/800mm /1.5Amp/EV1 silver
GZ147112	Outward opening bracket/black
GZ147110	Inward opening bracket/black



GEZE SPINDLE DRIVE

Heavy and wide casements in particular can be opened and closed by the GEZE E250NT electric motor drive. Individual speeds can be set for ventilation mode.

Part No.	Description
GZ146661	E250NT Linear 24v DC/300mm /0.9Amp/EV1 silver
GZ146664	E250NT Linear 24v DC/500mm /0.9Amp/EV1 silver
GZ146670	E250NT Linear 24v DC/750mm /1.1Amp/EV1 silver
GZ146673	E250NT Linear 24v DC/1000mm /1.1Amp/EV1 silver
GZ19032	Standard console/silver
GZ116112	Swivelling console/silver



GEZE RETRACTABLE ARM DRIVE

The retractable arm drive has been designed for use on doors and is mounted on the hinge side or opposite hinge side.

Part No.	Description
GZ130059	K600T 24v DC/1.4Amp/EV1 silver
GZ130057	K600G 24v DC/1.4Amp/EV1 silver
GZ130151	K600F 24v DC/1.4Amp/EV1 silver
GZ130153	K600 T bracket
GZ130154	K600 R bracket
GZ130155	K600 G bracket



BS 5839-6 Grade C Domestic Fire Alarm Kit!

- A conventional stand-alone Grade C domestic fire detection and alarm system to BS 5839-6 (2019) ideal for use in flats, houses & other residential dwellings.
- Includes all of the devices you need to create a typical LD2 dwelling system.
- Monitored for head removal, wiring, PSU and battery faults
- Easily accessible HUSH and TEST buttons
- Can be used in any situation where Grade D Mains/Battery Alarms are specified
- Supplied as a cost-effective kit for ease of specification and ordering
- Uses attractively designed EN54 certified detection and alarm devices
- One 10 year replaceable standby battery per system
- Environmentally Friendly - Up to 50% reduction in the mains power consumption of a typical Grade D system, less plastic and only one replaceable lithium-ion battery per system providing over 72 hours standby

NEW PRODUCT



Your Kit Includes:

- 1 x Hush-ActiV Controller c/w 72 Hour Standby Battery
- 1 x 230V/24V 250mA PSU | 1 x ActiV Multi Sensor
- 1 x ActiV Smoke Detector | 1 x ActiV Heat Detector
- 3 x ActiV Detector Bases | 1 x ActiV Base Sounder c/w Cover

HUSH-ACTIVE

Part No.	Description
HAK/3	BS 5839-6 Grade C Domestic Fire Alarm Kit

BS5839-6:2019

Category LD1:

A system installed throughout the premises, incorporating detectors in all circulation areas that form part of the escape routes from the premises, and in all rooms and areas, other than those with negligible sources of ignition, such as toilets bathrooms and shower rooms.

Category LD2:

A system incorporating detectors in all circulation areas that form part of the escape routes from the premises, and in all specified rooms or areas that present a high fire risk to occupants, including any kitchen and the principle habitable room.

Category LD3:

A system incorporating detectors in all circulation areas that form part of the escape routes from the premises.

LD1 - High Protection

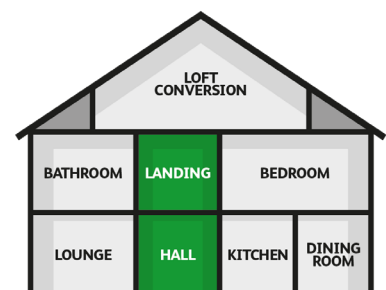
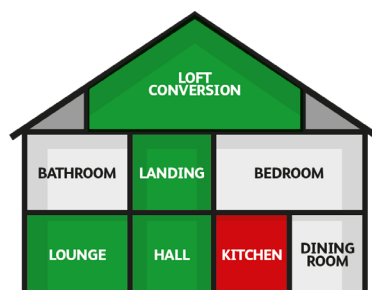
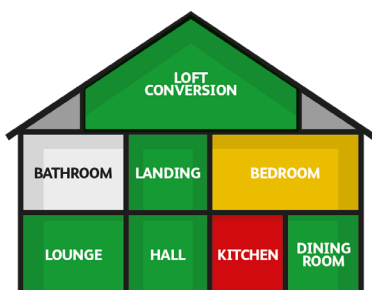
- All areas where a fire could start, e.g.:
- Bedrooms
- Kitchen
- Lounge
- Hallways
- Landings
- Airing cupboards/Meter cupboard

LD2 - Medium Protection

- Escape routes and high risk areas, e.g.:
- Lounge
- Kitchen
- Hallways
- Landings

LD3 - Minimum Protection

- Escape routes, e.g.:
- Hallways
- Landings



DOMESTIC DETECTORS



Aico, an Ei Company, are the European Market Leader in Home Life Safety. All Aico alarms meet UK standards and offer a variety of sensor types to guarantee protection for every home, the cornerstone of which is delivering education, quality, service and innovation.

140 RANGE

Mains Powered With 9V Alkaline Battery Back Up

Part No.	Description
EI146RC	AICO 230V Optical Detector
EI144RC	AICO 230V Heat Detector
EI141RC	AICO 230V Ionisation Smoke Detector
EI168RC	AICO RadioLink Base



1000 RANGE

Environmental Sensors with 10-year lithium batteries

Part No.	Description
EI1020	Environmental Sensor for Temperature and Humidity
EI1025	Environmental Sensor for Temperature, Humidity and Carbon Dioxide
EI1000G	SmartLINK Gateway



3000 RANGE

The Latest Most Intelligent Series

Part No.	Description
EI3028	AICO 230V Heat & CO Detector
EI3024	AICO 230V Optical & Heat Detector
EI3016	AICO 230V Optical Smoke Detector
EI3014	AICO 230V Heat Detector
EI3018	AICO 230V CO Detector
EI3000MRF	AICO SmartLINK Module



FIRE/CO ALARM INTERFACE

Part No.	Description
EI414	AICO Fire/CO Alarm Interface
EI428	AICO RadioLINK Relay Module
EI128R	AICO Hard Wired Relay Module
EI128RBU	AICO Hard Wired Relay Module With Battery Back Up
EI408	AICO RadiolINK Switched Input Module
EI129	AICO Hard Wired Switched Input Module
EI413	AICO RadiolINK Panel Interface Module

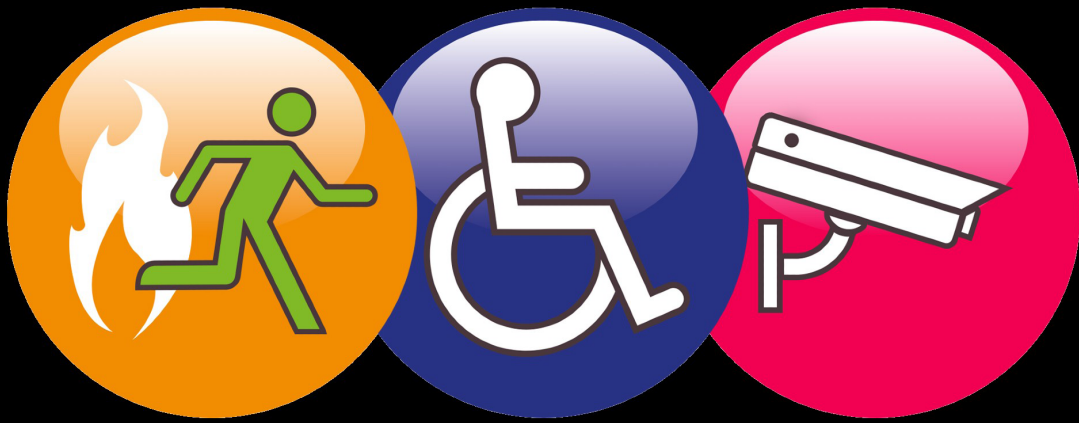


AudiolINK Data Extraction Technology - Real Time Facts... Real Time Action

Award winning AudioLINK technology makes it easy to get real time data directly from smoke alarms and Carbon Monoxide alarms – saving time, money and lives. All you need is an AudioLINK enabled alarm, a smartphone or tablet and the free AudioLINK app.

- Extraction can be done on-site without having to remove the alarm – ensuring continued detection
- The simple to read report is generated straight away – giving details of any incidents immediately
- Data can be extracted for AudioLINK alarms again and again
- Information is stored for the life of the alarm enabling historic information to be retained
- The Alarm Status Report provides evidence required for maintenance of records – required for Private Landlords renting out properties in England
- The Report can be emailed to form part of a properties record





IIKL Distribution

"So much more than Fire and Lighting"

For more information or to place your order:



0203 973 5555



sales@iikl.co.uk



www.iikl.co.uk

